


Anti-SURF4 antibody - N-terminal ab150327

[2 Images](#)

Overview

| | |
|----------------------------|---|
| Product name | Anti-SURF4 antibody - N-terminal |
| Description | Rabbit polyclonal to SURF4 - N-terminal |
| Host species | Rabbit |
| Specificity | BLAST analysis of the peptide immunogen showed no homology with other Human proteins. |
| Tested applications | Suitable for: IHC-P |
| Species reactivity | Reacts with: Human Predicted to work with: Mouse, Rat, Chicken, Cow, Dog, Turkey, Xenopus laevis, Monkey, Zebrafish, Gorilla, Orangutan  |
| Immunogen | Synthetic peptide, corresponding to 18 amino acids from the N terminal of Human SURF4 (NP_149351.1). |
| Positive control | Human placenta and kidney tissues. |
| General notes | <p>The Life Science industry has been in the grips of a reproducibility crisis for a number of years. Abcam is leading the way in addressing this with our range of recombinant monoclonal antibodies and knockout edited cell lines for gold-standard validation. Please check that this product meets your needs before purchasing.</p> <p>If you have any questions, special requirements or concerns, please send us an inquiry and/or contact our Support team ahead of purchase. Recommended alternatives for this product can be found below, along with publications, customer reviews and Q&As</p> |

Properties

| | |
|-----------------------------|--|
| Form | Liquid |
| Storage instructions | Shipped at 4°C. |
| Storage buffer | pH: 7.4 Preservative: 0.1% Sodium azide Constituent: 99% PBS |
| Purity | Immunogen affinity purified |
| Clonality | Polyclonal |
| Isotype | IgG |

Applications

The Abpromise guarantee

Our **Abpromise guarantee** covers the use of ab150327 in the following tested applications.

The application notes include recommended starting dilutions; optimal dilutions/concentrations should be determined by the end user.

| Application | Abreviews | Notes |
|-------------|-----------|---|
| IHC-P | | Use a concentration of 15 µg/ml. Perform heat mediated antigen retrieval with citrate buffer pH 6 before commencing with IHC staining protocol. |

Target

Function

May play a role in the maintenance of the architecture of the endoplasmic reticulum-Golgi intermediate compartment and of the Golgi.

Sequence similarities

Belongs to the SURF4 family.

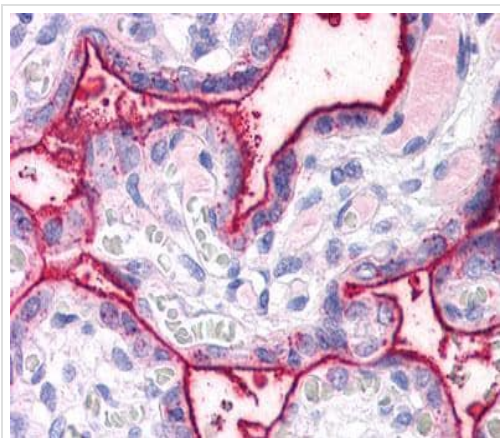
Domain

The di-lysine motif confers endoplasmic reticulum localization for type I membrane proteins.

Cellular localization

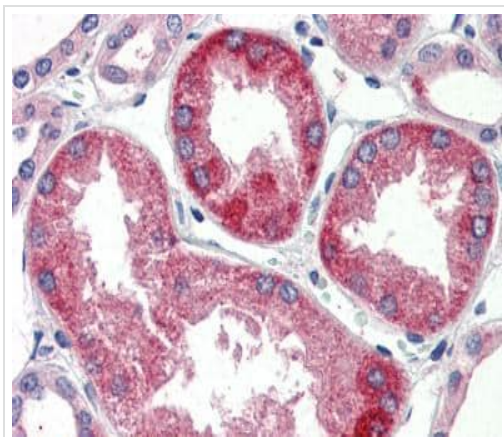
Endoplasmic reticulum membrane. Endoplasmic reticulum-Golgi intermediate compartment membrane. Golgi apparatus membrane. Cycles between the endoplasmic reticulum and the Golgi.

Images



Immunohistochemical analysis of Formalin-fixed, paraffin-embedded Human placenta tissue labeling SURF4 with ab150327 at 15µg/ml.

Immunohistochemistry (Formalin/PFA-fixed paraffin-embedded sections) - Anti-SURF4 antibody - N-terminal (ab150327)



Immunohistochemical analysis of Formalin-fixed, paraffin-embedded Human kidney tissue labeling SURF4 with ab150327 at 15µg/ml.

Immunohistochemistry (Formalin/PFA-fixed paraffin-embedded sections) - Anti-SURF4 antibody - N-terminal (ab150327)

Please note: All products are "FOR RESEARCH USE ONLY. NOT FOR USE IN DIAGNOSTIC PROCEDURES"

Our Abpromise to you: Quality guaranteed and expert technical support

- Replacement or refund for products not performing as stated on the datasheet
- Valid for 12 months from date of delivery
- Response to your inquiry within 24 hours
- We provide support in Chinese, English, French, German, Japanese and Spanish
- Extensive multi-media technical resources to help you
- We investigate all quality concerns to ensure our products perform to the highest standards

If the product does not perform as described on this datasheet, we will offer a refund or replacement. For full details of the Abpromise, please visit <https://www.abcam.com/abpromise> or contact our technical team.

Terms and conditions

- Guarantee only valid for products bought direct from Abcam or one of our authorized distributors