

Anti-SVCT1 antibody ab236878

[1 References](#) [3 Images](#)

Overview

Product name	Anti-SVCT1 antibody
Description	Rabbit polyclonal to SVCT1
Host species	Rabbit
Tested applications	Suitable for: WB, IHC-P, ICC/IF
Species reactivity	Reacts with: Mouse, Human
Immunogen	Recombinant fragment corresponding to Human SVCT1 aa 173-259. Database link: Q9UHI7
Positive control	WB: A549 whole cell lysate; Mouse kidney and liver tissue lysate. IHC-P: Human small intestine tissue. ICC/IF: A549 cells.
General notes	<p>The Life Science industry has been in the grips of a reproducibility crisis for a number of years. Abcam is leading the way in addressing this with our range of recombinant monoclonal antibodies and knockout edited cell lines for gold-standard validation. Please check that this product meets your needs before purchasing.</p> <p>If you have any questions, special requirements or concerns, please send us an inquiry and/or contact our Support team ahead of purchase. Recommended alternatives for this product can be found below, along with publications, customer reviews and Q&As</p>

Properties

Form	Liquid
Storage instructions	Shipped at 4°C. Store at +4°C short term (1-2 weeks). Upon delivery aliquot. Store at -20°C long term. Avoid freeze / thaw cycle.
Storage buffer	pH: 7.40 Preservative: 0.03% Proclin 300 Constituents: 50% Glycerol (glycerin, glycerine), PBS
Purity	Protein G purified
Purification notes	Purity >95%.
Clonality	Polyclonal
Isotype	IgG

Applications

The Abpromise guarantee

Our **Abpromise guarantee** covers the use of ab236878 in the following tested applications.

The application notes include recommended starting dilutions; optimal dilutions/concentrations should be determined by the end user.

Application	Abreviews	Notes
WB		1/500 - 1/2000.
IHC-P		1/20 - 1/200.
ICC/IF		1/50 - 1/200.

Target

Function

Sodium/ascorbate cotransporter. Mediates electrogenic uptake of vitamin C, with a stoichiometry of 2 Na(+) for each ascorbate.

Tissue specificity

Highly expressed in adult small intestine, kidney, thymus, ovary, colon, prostate and liver, and in fetal kidney, liver and thymus.

Sequence similarities

Belongs to the xanthine/uracil permease family. Nucleobase:cation symporter-2 (NCS2) (TC 2.A.40) subfamily.

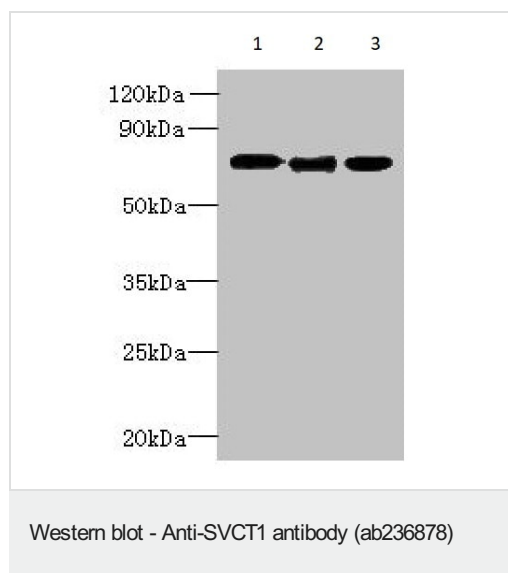
Post-translational modifications

Phosphorylated.

Cellular localization

Membrane.

Images



All lanes : Anti-SVCT1 antibody (ab236878) at 1/500 dilution

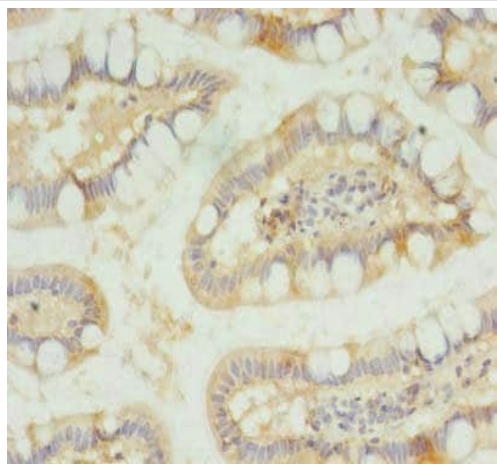
Lane 1 : A549 (Human lung carcinoma cell line) whole cell lysate

Lane 2 : Mouse liver tissue lysate

Lane 3 : Mouse kidney tissue lysate

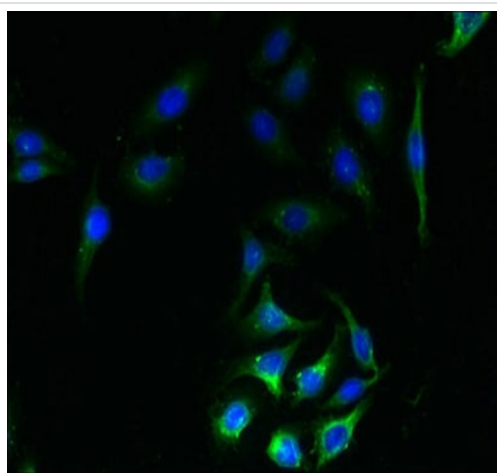
Secondary

All lanes : Goat polyclonal to Rabbit IgG at 1/10000 dilution



Immunohistochemistry (Formalin/PFA-fixed paraffin-embedded sections) - Anti-SVCT1 antibody (ab236878)

Paraffin-embedded human small intestine tissue stained for SVCT1 with ab236878 at a 1/100 dilution in immunohistochemical analysis.



Immunocytochemistry/ Immunofluorescence - Anti-SVCT1 antibody (ab236878)

A549 (Human lung carcinoma cell line) cells stained for SVCT1 (Green) using ab236878 at a 1/100 dilution in ICC/IF. Secondary used is an Alexa-Fluor[®]488-conjugated Goat Anti-Rabbit IgG (H+L).

Please note: All products are "FOR RESEARCH USE ONLY. NOT FOR USE IN DIAGNOSTIC PROCEDURES"

Our Abpromise to you: Quality guaranteed and expert technical support

- Replacement or refund for products not performing as stated on the datasheet
- Valid for 12 months from date of delivery
- Response to your inquiry within 24 hours
- We provide support in Chinese, English, French, German, Japanese and Spanish
- Extensive multi-media technical resources to help you

- We investigate all quality concerns to ensure our products perform to the highest standards

If the product does not perform as described on this datasheet, we will offer a refund or replacement. For full details of the Abpromise, please visit <https://www.abcam.com/abpromise> or contact our technical team.

Terms and conditions

- Guarantee only valid for products bought direct from Abcam or one of our authorized distributors