

Anti-Swd2 antibody [EPR27034-63] ab307554

Recombinant RabMAb

13 Images

Overview

Product name	Anti-Swd2 antibody [EPR27034-63]
Description	Rabbit monoclonal [EPR27034-63] to Swd2
Host species	Rabbit
Tested applications	Suitable for: Flow Cyt (Intra), WB, IHC-P, ICC/IF, IP
Species reactivity	Reacts with: Mouse, Rat, Human
Immunogen	Recombinant fragment. This information is proprietary to Abcam and/or its suppliers.
Positive control	WB: HeLa, HeLa transfected with siRNA specifically targeting Swd2, HeLa, HCT116, HepG2, NIH/3T3, Human colon, Mouse colon and Rat colon lysates. IHC-P: Human colon, Human colon cancer, Mouse colon and Rat colon tissues. ICC/IF: HeLa and NIH/3T3 cells Flow Cyt (intra): HeLa and NIH/3T3 cells IP: Human colon and Mouse colon cells
General notes	<p>This product is a recombinant monoclonal antibody, which offers several advantages including:</p> <ul style="list-style-type: none"> - High batch-to-batch consistency and reproducibility - Improved sensitivity and specificity - Long-term security of supply - Animal-free production <p>For more information see here.</p> <p>Our RabMAb[®] technology is a patented hybridoma-based technology for making rabbit monoclonal antibodies. For details on our patents, please refer to RabMAb[®] patents.</p>

Properties

Form	Liquid
Storage instructions	Shipped at 4°C. Store at +4°C short term (1-2 weeks). Upon delivery aliquot. Store at -20°C long term. Avoid freeze / thaw cycle.
Storage buffer	<p>pH: 7.20</p> <p>Preservative: 0.01% Sodium azide</p> <p>Constituents: 40% Glycerol (glycerin, glycerine), 0.05% BSA, 59% PBS</p>
Purity	Protein A purified
Clonality	Monoclonal
Clone number	EPR27034-63

Isotype

IgG

Applications

The Abpromise guarantee

Our **Abpromise guarantee** covers the use of ab307554 in the following tested applications.

The application notes include recommended starting dilutions; optimal dilutions/concentrations should be determined by the end user.

Application	Abreviews	Notes
Flow Cyt (Intra)		1/500.
WB		1/1000. Predicted molecular weight: 35 kDa.
IHC-P		1/500 - 1/2000. Perform heat mediated antigen retrieval with Tris/EDTA buffer pH 9.0 before commencing with IHC staining protocol.
ICC/IF		1/50.
IP		1/30.

Target

Function

Regulatory component of the SET1 complex implicated in the tethering of this complex to transcriptional start sites of active genes. Facilitates histone H3 'Lys-4' methylation via recruitment of the SETD1A or SETD1B to the 'Ser-5' phosphorylated C-terminal domain (CTD) of RNA polymerase II large subunit (POLR2A). Component of PTW/PP1 phosphatase complex, which plays a role in the control of chromatin structure and cell cycle progression during the transition from mitosis into interphase.

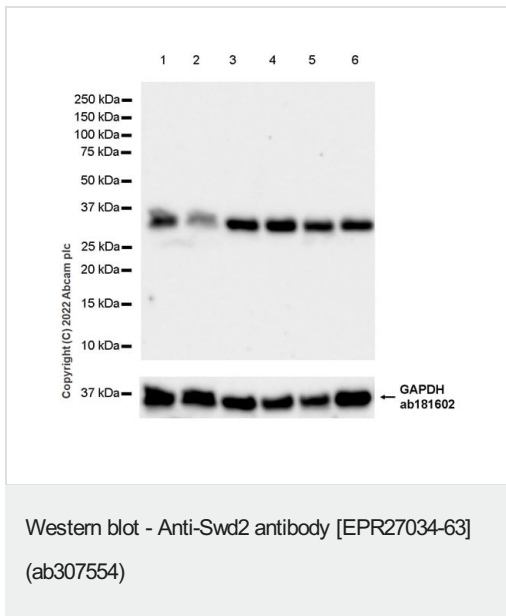
Sequence similarities

Belongs to the WD repeat SWD2 family.
Contains 6 WD repeats.

Cellular localization

Nucleus. Associates with chromatin.

Images



All lanes : Anti-Swd2 antibody [EPR27034-63] (ab307554) at 1/1000 dilution

Lane 1 : HeLa (human cervix adenocarcinoma epithelial cell)

transfected with scrambled siRNA control whole cell lysate

Lane 2 : HeLa transfected with siRNA specifically targeting Swd2, whole cell lysate

Lane 3 : HeLa whole cell lysate

Lane 4 : HCT116 (human colorectal carcinoma epithelial cell) whole cell lysate

Lane 5 : HepG2 (human hepatocellular carcinoma epithelial cell) whole cell lysate

Lane 6 : NIH/3T3 (mouse embryonic fibroblast) whole cell lysate

Lysates/proteins at 20 µg per lane.

Secondary

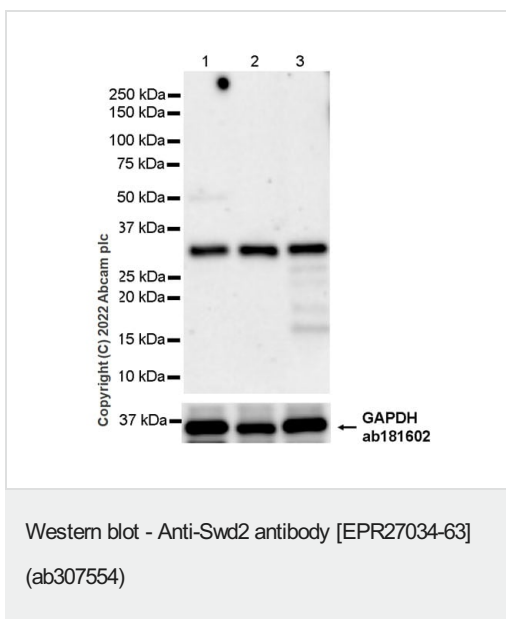
All lanes : Goat Anti-Rabbit IgG, (H+L), Peroxidase conjugated (**ab97051**) at 1/100000 dilution

Predicted band size: 35 kDa

Observed band size: 35 kDa

Blocking and diluting buffer and concentration: 5% NFDM/TBST

Exposure time: 27 seconds



All lanes : Anti-Swd2 antibody [EPR27034-63] (ab307554) at 1/1000 dilution

Lane 1 : Human colon tissue lysate

Lane 2 : Mouse colon tissue lysate

Lane 3 : Rat colon tissue lysate

Lysates/proteins at 10 µg per lane.

Secondary

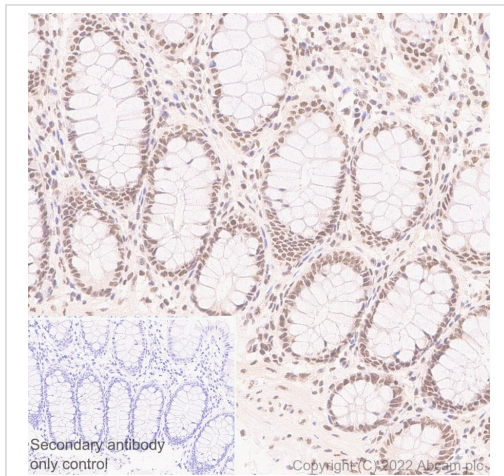
All lanes : Goat Anti-Rabbit IgG, (H+L), Peroxidase conjugated (**ab97051**) at 1/100000 dilution

Predicted band size: 35 kDa

Observed band size: 35 kDa

Blocking and diluting buffer and concentration: 5% NFDM/TBST

Exposure time: 103 seconds

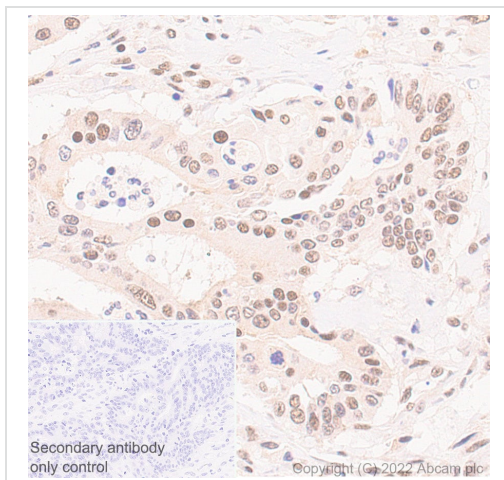


Immunohistochemistry (Formalin/PFA-fixed paraffin-embedded sections) - Anti-Swd2 antibody [EPR27034-63] (ab307554)

Immunohistochemical analysis of paraffin-embedded Human colon tissue labeling Swd2 with ab307554 at 1/500 (1.1 ug/ml) followed by a LeicaDS9800 (Bond™ Polymer Refine Detection) was used at Ready to use dilution. Nuclear staining on human colon (PMID: 30008910). The section was incubated with ab307554 for 30 mins at room temperature. The immunostaining was performed on a Leica Biosystems BOND® RX instrument Counterstained with Hematoxylin.

Secondary antibody only control: Secondary antibody is LeicaDS9800 (Bond™ Polymer Refine Detection) was used at Ready to use dilution.

Heat mediated antigen retrieval was performed with Tris-EDTA buffer (pH 9.0, Epitope Retrieval Solution2) for 20 mins

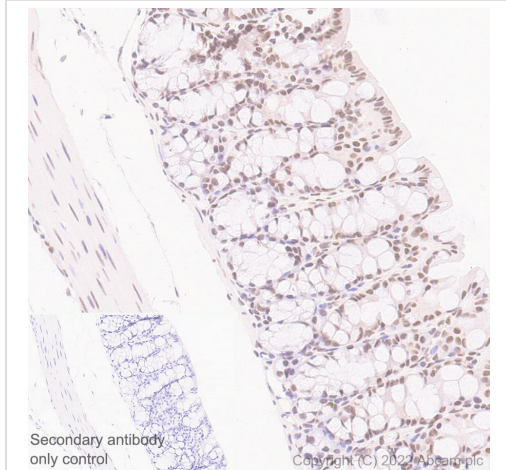


Immunohistochemistry (Formalin/PFA-fixed paraffin-embedded sections) - Anti-Swd2 antibody [EPR27034-63] (ab307554)

Immunohistochemical analysis of paraffin-embedded Human colon cancer tissue labeling Swd2 with ab307554 at 1/500 (1.1 ug/ml) followed by a LeicaDS9800 (Bond™ Polymer Refine Detection) was used at Ready to use dilution. Nuclear staining on human colon cancer (PMID: 30008910). The section was incubated with ab307554 for 30 mins at room temperature. The immunostaining was performed on a Leica Biosystems BOND® RX instrument Counterstained with Hematoxylin.

Secondary antibody only control: Secondary antibody is LeicaDS9800 (Bond™ Polymer Refine Detection) was used at Ready to use dilution.

Heat mediated antigen retrieval was performed with Tris-EDTA buffer (pH 9.0, Epitope Retrieval Solution2) for 20 mins

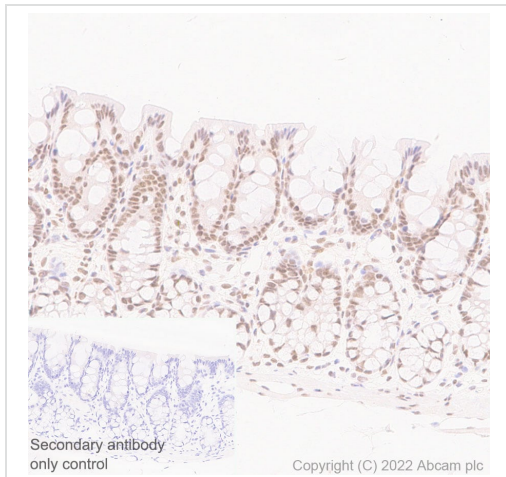


Immunohistochemistry (Formalin/PFA-fixed paraffin-embedded sections) - Anti-Swd2 antibody [EPR27034-63] (ab307554)

Immunohistochemical analysis of paraffin-embedded Mouse colon tissue labeling Swd2 with ab307554 at 1/2000 (0.275 ug/ml) followed by a LeicaDS9800 (Bond™ Polymer Refine Detection) was used at Ready to use dilution. Nuclear staining on mouse colon. The section was incubated with ab307554 for 30 mins at room temperature. The immunostaining was performed on a Leica Biosystems BOND® RX instrument Counterstained with Hematoxylin.

Secondary antibody only control: Secondary antibody is LeicaDS9800 (Bond™ Polymer Refine Detection) was used at Ready to use dilution.

Heat mediated antigen retrieval was performed with Tris-EDTA buffer (pH 9.0, Epitope Retrieval Solution2) for 20 mins

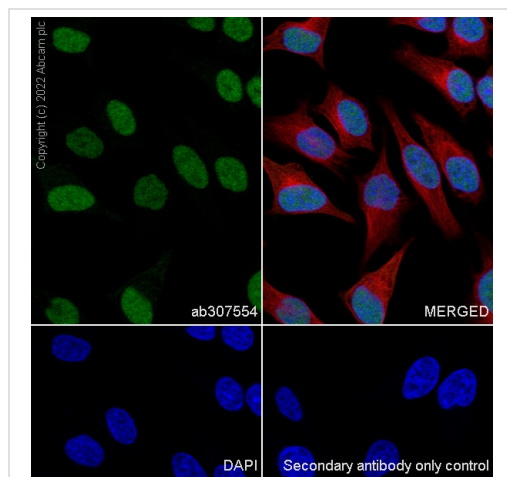


Immunohistochemistry (Formalin/PFA-fixed paraffin-embedded sections) - Anti-Swd2 antibody [EPR27034-63] (ab307554)

Immunohistochemical analysis of paraffin-embedded Rat colon tissue labeling Swd2 with ab307554 at 1/2000 (0.275 ug/ml) followed by a LeicaDS9800 (Bond™ Polymer Refine Detection) was used at Ready to use dilution. Nuclear staining on rat colon. The section was incubated with ab307554 for 30 mins at room temperature. The immunostaining was performed on a Leica Biosystems BOND® RX instrument Counterstained with Hematoxylin.

Secondary antibody only control: Secondary antibody is LeicaDS9800 (Bond™ Polymer Refine Detection) was used at Ready to use dilution.

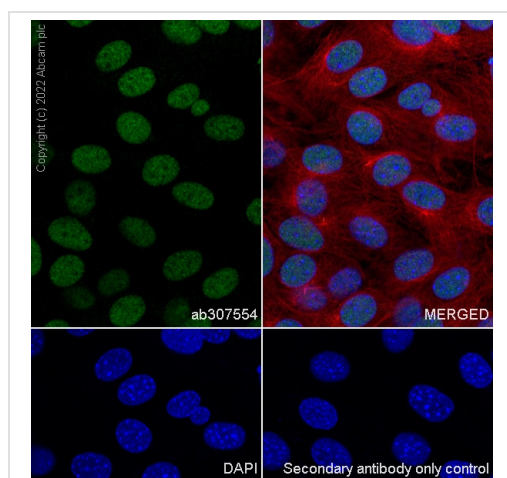
Heat mediated antigen retrieval was performed with Tris-EDTA buffer (pH 9.0, Epitope Retrieval Solution2) for 20 mins



Immunocytochemistry/ Immunofluorescence - Anti-Swd2 antibody [EPR27034-63] (ab307554)

Immunofluorescent analysis of 4% Paraformaldehyde-fixed, 0.1% TritonX-100 permeabilized HeLa (human cervix adenocarcinoma epithelial cell) cells labelling Swd2 with ab307554 at 1/50 (11.0 ug/ml) dilution, followed by **ab150081** Goat Anti-Rabbit IgG H&L (Alexa Fluor® 488) preadsorbed antibody at 1/1000 (2 ug/ml) dilution (Green). Confocal image showing nuclear staining in HeLa cell line. Image was taken with a confocal microscope (Leica-Microsystems, TCS SP8). is observed. **ab195889** Anti-alpha Tubulin mouse monoclonal antibody - Microtubule Marker (Alexa Fluor® 594) was used to counterstain tubulin at 1/200 (2.5ug/ml) dilution (Red). The Nuclear counterstain was DAPI (Blue).

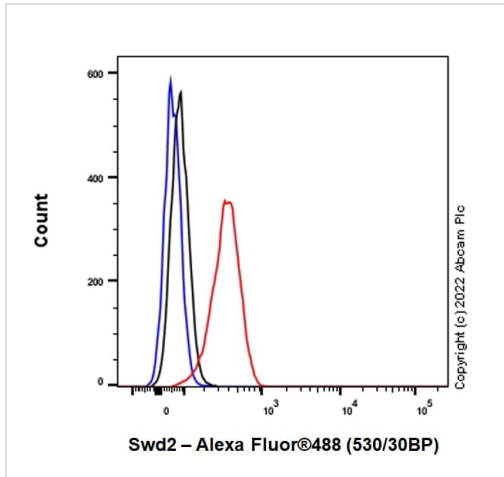
Secondary antibody only control: Secondary antibody is **ab150081** Goat Anti-Rabbit IgG H&L (Alexa Fluor® 488) preadsorbed at 1/1000 (2 ug/ml) dilution.



Immunocytochemistry/ Immunofluorescence - Anti-Swd2 antibody [EPR27034-63] (ab307554)

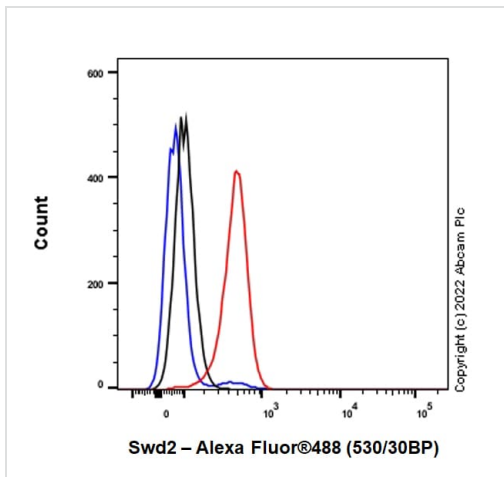
Immunofluorescent analysis of 4% Paraformaldehyde-fixed, 0.1% TritonX-100 permeabilized NIH/3T3 (mouse embryonic fibroblast) cells labelling Swd2 with ab307554 at 1/50 (11.0 ug/ml) dilution, followed by **ab150081** Goat Anti-Rabbit IgG H&L (Alexa Fluor® 488) preadsorbed antibody at 1/1000 (2 ug/ml) dilution (Green). Confocal image showing nuclear staining in NIH/3T3 cell line. Image was taken with a confocal microscope (Leica-Microsystems, TCS SP8). is observed. **ab195889** Anti-alpha Tubulin mouse monoclonal antibody - Microtubule Marker (Alexa Fluor® 594) was used to counterstain tubulin at 1/200 (2.5ug/ml) dilution (Red). The Nuclear counterstain was DAPI (Blue).

Secondary antibody only control: Secondary antibody is **ab150081** Goat Anti-Rabbit IgG H&L (Alexa Fluor® 488) preadsorbed at 1/1000 2 ug/ml dilution.



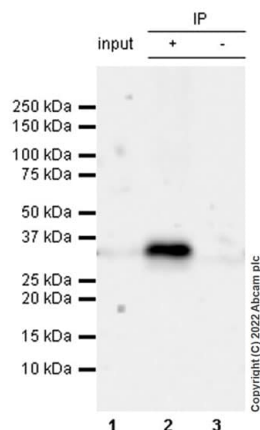
Flow cytometric analysis of 4% paraformaldehyde fixed 90% methanol permeabilized HeLa (human cervix adenocarcinoma epithelial cell) cells labelling Swd2 with ab307554 at 1/500 dilution (0.1ug) (Red) compared with a Rabbit monoclonal IgG (**ab172730**) (Black) isotype control and an unlabelled control (cells without incubation with primary antibody and secondary antibody) (Blue). A Goat Anti-Rabbit IgG (Alexa Fluor® 488, **ab150081**) at 1/2000 dilution was used as the secondary antibody.

Flow Cytometry (Intracellular) - Anti-Swd2 antibody
[EPR27034-63] (ab307554)



Flow cytometric analysis of 4% paraformaldehyde fixed 90% methanol permeabilized NIH/3T3 (mouse embryonic fibroblast) cells labelling Swd2 with ab307554 at 1/500 dilution (0.1ug) (Red) compared with a Rabbit monoclonal IgG (**ab172730**) (Black) isotype control and an unlabelled control (cells without incubation with primary antibody and secondary antibody) (Blue). A Goat Anti-Rabbit IgG (Alexa Fluor® 488, **ab150081**) at 1/2000 dilution was used as the secondary antibody.

Flow Cytometry (Intracellular) - Anti-Swd2 antibody
[EPR27034-63] (ab307554)



Immunoprecipitation - Anti-Swd2 antibody
[EPR27034-63] (ab307554)

Swd2 was immunoprecipitated from 0.35 mg human colon tissue lysate 10 ug with ab307554 at 1/30 dilution (2ug in 0.35mg lysates). Western blot was performed on the immunoprecipitate using ab307554 at 1/1000 dilution. VeriBlot for IP secondary antibody(HRP)([ab131366](#)) was used at 1/5000 dilution.

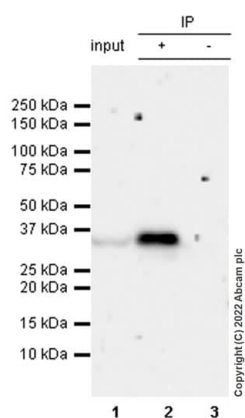
Lane 1: human colon tissue lysate 10 ug

Lane 2: abab307554 IP in Mouse colon tissue lysate

Lane 3:Rabbit monoclonal IgG ([ab172730](#)) instead of ab307554 in human colon tissue lysate

Blocking and dilution buffer and concentration: 5% NFDm/TBST.

Exposure time: 67 seconds



Immunoprecipitation - Anti-Swd2 antibody
[EPR27034-63] (ab307554)

Swd2 was immunoprecipitated from 0.35 mg Mouse colon tissue lysate 10 ug with ab307554 at 1/30 dilution (2ug in 0.35mg lysates). Western blot was performed on the immunoprecipitate using ab307554 at 1/1000 dilution. VeriBlot for IP secondary antibody(HRP)([ab131366](#)) was used at 1/5000 dilution.

Lane 1: Mouse colon tissue lysate 10 ug




Lane 2: abab307554 IP in Mouse colon tissue lysate

Lane 3:Rabbit monoclonal IgG ([ab172730](#)) instead of ab307554 in mouse colon tissue lysate

Blocking and dilution buffer and concentration: 5% NFDm/TBST.

Exposure time: 67 seconds

Why choose a recombinant antibody?

 <p>Research with confidence Consistent and reproducible results</p>	 <p>Long-term and scalable supply Recombinant technology</p>
 <p>Success from the first experiment Confirmed specificity</p>	 <p>Ethical standards compliant Animal-free production</p>

Anti-Swd2 antibody [EPR27034-63] (ab307554)

Please note: All products are "FOR RESEARCH USE ONLY. NOT FOR USE IN DIAGNOSTIC PROCEDURES"

Our Abpromise to you: Quality guaranteed and expert technical support

- Replacement or refund for products not performing as stated on the datasheet
- Valid for 12 months from date of delivery
- Response to your inquiry within 24 hours
- We provide support in Chinese, English, French, German, Japanese and Spanish
- Extensive multi-media technical resources to help you
- We investigate all quality concerns to ensure our products perform to the highest standards

If the product does not perform as described on this datasheet, we will offer a refund or replacement. For full details of the Abpromise, please visit <https://www.abcam.com/abpromise> or contact our technical team.

Terms and conditions

- Guarantee only valid for products bought direct from Abcam or one of our authorized distributors