

# Anti-Synaptogyrin 3 antibody ab106460

[1 References](#) [1 Image](#)

## Overview

<b>Product name</b>	Anti-Synaptogyrin 3 antibody
<b>Description</b>	Rabbit polyclonal to Synaptogyrin 3
<b>Host species</b>	Rabbit
<b>Specificity</b>	ab106460 does not cross-react with other Synaptogyrin family members
<b>Tested applications</b>	<b>Suitable for:</b> WB
<b>Species reactivity</b>	<b>Reacts with:</b> Mouse
<b>Immunogen</b>	A 19 amino acid peptide from near the C terminal of Human Synaptogyrin 3 (NP_004200).
<b>Positive control</b>	WB: Mouse brain tissue lysate
<b>General notes</b>	<p>The Life Science industry has been in the grips of a reproducibility crisis for a number of years. Abcam is leading the way in addressing this with our range of recombinant monoclonal antibodies and knockout edited cell lines for gold-standard validation. Please check that this product meets your needs before purchasing.</p> <p>If you have any questions, special requirements or concerns, please send us an inquiry and/or contact our Support team ahead of purchase. Recommended alternatives for this product can be found below, along with publications, customer reviews and Q&amp;As</p>

## Properties

<b>Form</b>	Liquid
<b>Storage instructions</b>	Shipped at 4°C. Store at +4°C short term (1-2 weeks). Store at +4°C.
<b>Storage buffer</b>	<p>pH: 7.2</p> <p>Preservative: 0.02% Sodium azide</p> <p>Constituent: PBS</p>
<b>Purity</b>	Immunogen affinity purified
<b>Clonality</b>	Polyclonal
<b>Isotype</b>	IgG

## Applications

Our **[Abpromise guarantee](#)** covers the use of ab106460 in the following tested applications.

## The Abpromise guarantee

The application notes include recommended starting dilutions; optimal dilutions/concentrations should be determined by the end user.

Application	Abreviews	Notes
WB		Use a concentration of 1 - 2 µg/ml. Predicted molecular weight: 25 kDa.

## Target

### Function

Involved in the positive regulation of dopamine transporter activity. Probably facilitates the physical and functional interactions of the transporter with the dopamine vesicular storage system, allowing a more efficient loading of the vesicles with extracellular dopamine after release.

### Tissue specificity

Expressed in brain and placenta.

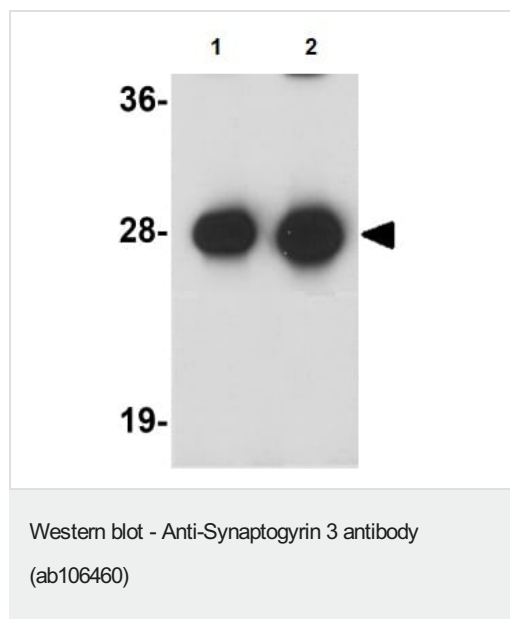
### Sequence similarities

Belongs to the synaptogyrin family.  
Contains 1 MARVEL domain.

### Cellular localization

Membrane. Cytoplasmic vesicle > secretory vesicle > synaptic vesicle. Cell junction > synapse.  
Found at the neuromuscular synapses.

## Images



**Lane 1 :** Anti-Synaptogyrin 3 antibody (ab106460) at 1 µg/ml

**Lane 2 :** Anti-Synaptogyrin 3 antibody (ab106460) at 2 µg/ml

**All lanes :** Mouse brain tissue lysate

Lysates/proteins at 15 µg per lane.

**Predicted band size:** 25 kDa

**Please note:** All products are "FOR RESEARCH USE ONLY. NOT FOR USE IN DIAGNOSTIC PROCEDURES"

## Our Abpromise to you: Quality guaranteed and expert technical support

- Replacement or refund for products not performing as stated on the datasheet
- Valid for 12 months from date of delivery
- Response to your inquiry within 24 hours

- We provide support in Chinese, English, French, German, Japanese and Spanish
- Extensive multi-media technical resources to help you
- We investigate all quality concerns to ensure our products perform to the highest standards

If the product does not perform as described on this datasheet, we will offer a refund or replacement. For full details of the Abpromise, please visit <https://www.abcam.com/abpromise> or contact our technical team.

#### **Terms and conditions**

---

- Guarantee only valid for products bought direct from Abcam or one of our authorized distributors