

Product datasheet

Anti-Synaptophysin antibody ab14692

★★★★★ [9 Abreviews](#) [102 References](#) [3 Images](#)

Overview

Product name	Anti-Synaptophysin antibody
Description	Rabbit polyclonal to Synaptophysin
Host species	Rabbit
Specificity	The antibody does not cross-react other synaptic vesicle proteins such as synaptotagmin, GAP45, and SNAP25 proteins.
Tested applications	Suitable for: WB, IHC-P
Species reactivity	Reacts with: Mouse, Rat
Immunogen	Synthetic peptide corresponding to Human Synaptophysin aa 41-62. Sequence: FATCGSYSGELQLSVDKANKTE

 [Run BLAST with](#)

 [Run BLAST with](#)

Positive control IHC: Rat and mouse brain. WB: Mouse forebrain extract.

General notes The Life Science industry has been in the grips of a reproducibility crisis for a number of years. Abcam is leading the way in addressing this with our range of recombinant monoclonal antibodies and knockout edited cell lines for gold-standard validation. Please check that this product meets your needs before purchasing.

If you have any questions, special requirements or concerns, please send us an inquiry and/or contact our Support team ahead of purchase. Recommended alternatives for this product can be found below, along with publications, customer reviews and Q&As

Properties

Form	Liquid
Storage instructions	Shipped at 4°C. Store at +4°C short term (1-2 weeks). Upon delivery aliquot. Store at -20°C. Avoid freeze / thaw cycle.
Storage buffer	Preservative: 0.02% Sodium azide The buffer includes stabilizing proteins and glycerol.
Purity	Immunogen affinity purified
Clonality	Polyclonal

Isotype

IgG

Applications

The Abpromise guarantee

Our **Abpromise guarantee** covers the use of ab14692 in the following tested applications.

The application notes include recommended starting dilutions; optimal dilutions/concentrations should be determined by the end user.

Application	Abreviews	Notes
WB		1/200 - 1/1000. Detects a band of approximately 42 kDa (predicted molecular weight: 38 kDa).
IHC-P	★★★★★ (2)	1/100.

Target

Function

Possibly involved in structural functions as organizing other membrane components or in targeting the vesicles to the plasma membrane. Involved in the regulation of short-term and long-term synaptic plasticity.

Tissue specificity

Characteristic of a type of small (30-80 nm) neurosecretory vesicles, including presynaptic vesicles, but also vesicles of various neuroendocrine cells of both neuronal and epithelial phenotype.

Involvement in disease

Mental retardation, X-linked, SYP-related

Sequence similarities

Belongs to the synaptophysin/synaptobrevin family.
Contains 1 MARVEL domain.

Domain

The calcium-binding activity is thought to be localized in the cytoplasmic tail of the protein.

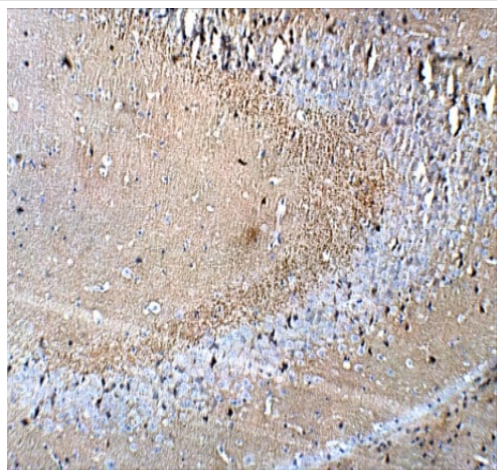
Post-translational modifications

Ubiquitinated; mediated by SIAH1 or SIAH2 and leading to its subsequent proteasomal degradation.

Cellular localization

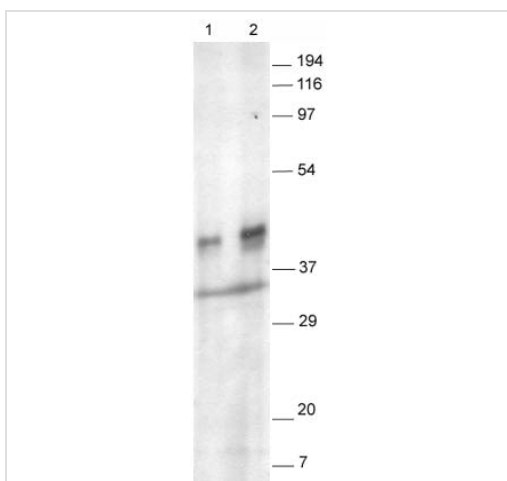
Cytoplasmic vesicle, secretory vesicle, synaptic vesicle membrane. Cell junction, synapse, synaptosome.

Images



Immunohistochemistry (Formalin/PFA-fixed paraffin-embedded sections) - Anti-Synaptophysin antibody (ab14692)

Immunohistochemical analysis of formaldehyde-fixed, paraffin-embedded mouse brain sections labelling Synaptophysin with ab14692 at a dilution of 1/100 in IHC blocking Buffer. DAB (brown_ staining and Hematoxylin QS (blue) counterstain was used. 20x magnification of Leica DM4000.



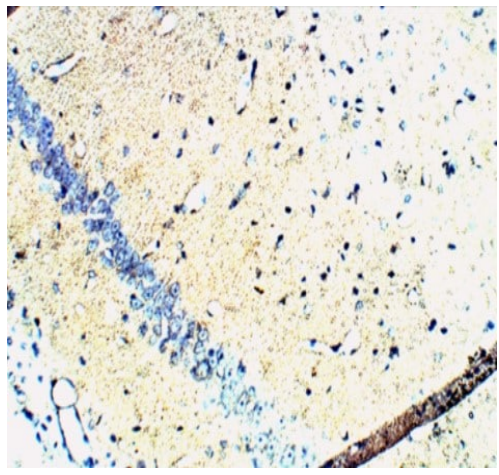
Western blot - Anti-Synaptophysin antibody (ab14692)

This image is courtesy of Chris Anderson, Wellcome Trust Sanger Institute, United Kingdom

Synaptophysin antibody (ab14692) western blot on mouse forebrain extract (10µg protein/lane). The blot was exposed for 10 minutes to autoradiographic film. Ladder markers from 7-194 kDa.

Lane 1 = 1/500 ab14692

Lane 2 = 1/200 ab14692



Immunohistochemical analysis of formaldehyde-fixed, paraffin-embedded rat brain sections labelling Synaptophysin with ab14692 at a dilution of 1/100 In IHC blocking Buffer. DAB (brown_ staining and Hematoxylin QS (blue) counterstain was used. 20x magnification of Leica DM4000.

Immunohistochemistry (Formalin/PFA-fixed paraffin-embedded sections) - Anti-Synaptophysin antibody (ab14692)

Please note: All products are "FOR RESEARCH USE ONLY. NOT FOR USE IN DIAGNOSTIC PROCEDURES"

Our Abpromise to you: Quality guaranteed and expert technical support

- Replacement or refund for products not performing as stated on the datasheet
- Valid for 12 months from date of delivery
- Response to your inquiry within 24 hours
- We provide support in Chinese, English, French, German, Japanese and Spanish
- Extensive multi-media technical resources to help you
- We investigate all quality concerns to ensure our products perform to the highest standards

If the product does not perform as described on this datasheet, we will offer a refund or replacement. For full details of the Abpromise, please visit <https://www.abcam.com/abpromise> or contact our technical team.

Terms and conditions

- Guarantee only valid for products bought direct from Abcam or one of our authorized distributors