


Anti-Synaptotagmin antibody ab51164

[1 References](#) [2 Images](#)

Overview

Product name	Anti-Synaptotagmin antibody
Description	Rabbit polyclonal to Synaptotagmin
Host species	Rabbit
Tested applications	Suitable for: WB, IHC-P, ELISA
Species reactivity	Reacts with: Human Predicted to work with: Mouse 
Immunogen	Synthesized non-phosphopeptide derived from human Synaptotagmin around the phosphorylation site of serine 309.
Positive control	293 cell extract treated with PMA (125ng/ml, 30min) and human breast carcinoma tissue.
General notes	<p>The Life Science industry has been in the grips of a reproducibility crisis for a number of years. Abcam is leading the way in addressing this with our range of recombinant monoclonal antibodies and knockout edited cell lines for gold-standard validation. Please check that this product meets your needs before purchasing.</p> <p>If you have any questions, special requirements or concerns, please send us an inquiry and/or contact our Support team ahead of purchase. Recommended alternatives for this product can be found below, along with publications, customer reviews and Q&As</p>

Properties

Form	Liquid
Storage instructions	Shipped at 4°C. Store at -20°C. Stable for 12 months at -20°C.
Storage buffer	<p>pH: 7.40</p> <p>Preservative: 0.02% Sodium azide</p> <p>Constituents: 50% Glycerol (glycerin, glycerine), 0.87% Sodium chloride, PBS</p>
Purity	Without Mg+2 and Ca+2
Clonality	Immunogen affinity purified
Isotype	Polyclonal
	IgG

Applications

The Abpromise guarantee

Our **Abpromise guarantee** covers the use of ab51164 in the following tested applications.

The application notes include recommended starting dilutions; optimal dilutions/concentrations should be determined by the end user.

Application	Abreviews	Notes
WB		1/500 - 1/1000. Detects a band of approximately 45 kDa (predicted molecular weight: 48 kDa).
IHC-P		Use at an assay dependent concentration.
ELISA		1/20000.

Target

Function

May have a regulatory role in the membrane interactions during trafficking of synaptic vesicles at the active zone of the synapse. It binds acidic phospholipids with a specificity that requires the presence of both an acidic head group and a diacyl backbone.

Sequence similarities

Belongs to the synaptotagmin family.
Contains 2 C2 domains.

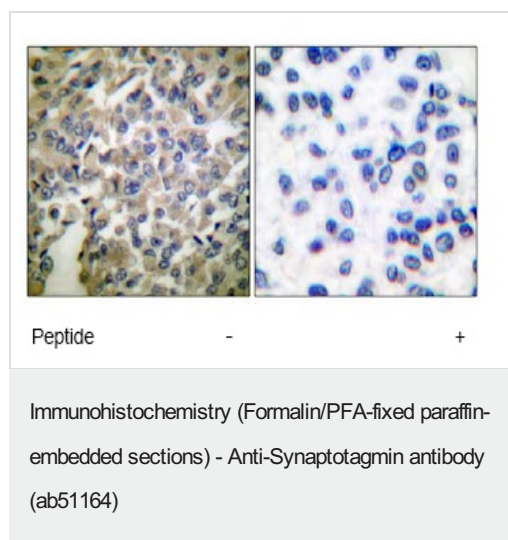
Domain

The first C2 domain mediates Ca^{2+} -dependent phospholipid binding.
The second C2 domain mediates interaction with Stonin 2.

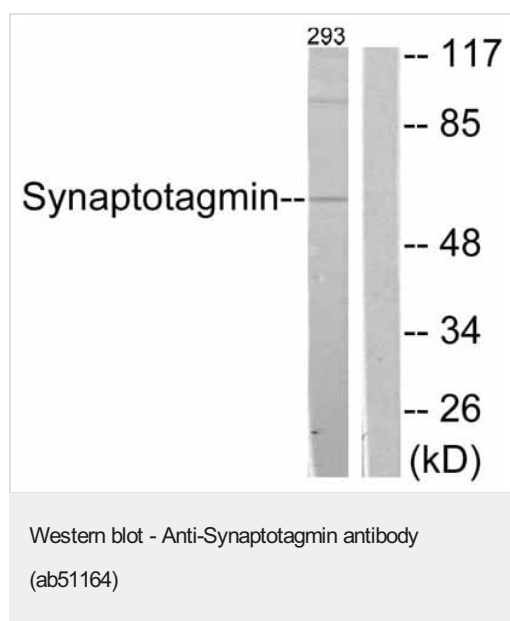
Cellular localization

Cytoplasmic vesicle, secretory vesicle, synaptic vesicle membrane. Cytoplasmic vesicle, secretory vesicle, chromaffin granule membrane. Synaptic vesicles and chromaffin granules.

Images



Immunohistochemical analysis of human breast carcinoma tissue (paraffin section) using ab51164 (1/50 dilution); with and without peptide.



All lanes : Anti-Synaptotagmin antibody (ab51164) at 1/500 dilution

Lane 1 : 293 cell extract treated with PMA (125ng/ml, 30min); without peptide

Lane 2 : 293 cell extract treated with PMA (125ng/ml, 30min); with peptide

Predicted band size: 48 kDa

Observed band size: 45 kDa

Please note: All products are "FOR RESEARCH USE ONLY. NOT FOR USE IN DIAGNOSTIC PROCEDURES"

Our Abpromise to you: Quality guaranteed and expert technical support

- Replacement or refund for products not performing as stated on the datasheet
- Valid for 12 months from date of delivery
- Response to your inquiry within 24 hours
- We provide support in Chinese, English, French, German, Japanese and Spanish
- Extensive multi-media technical resources to help you
- We investigate all quality concerns to ensure our products perform to the highest standards

If the product does not perform as described on this datasheet, we will offer a refund or replacement. For full details of the Abpromise, please visit <https://www.abcam.com/abpromise> or contact our technical team.

Terms and conditions

- Guarantee only valid for products bought direct from Abcam or one of our authorized distributors