


Product datasheet

Anti-Syntaxin 6 antibody [EP7665] - Golgi Membrane Marker ab140607

RabMAb

★★★★★ [3 Abreviews](#) [6 References](#) [3 Images](#)

Overview

Product name	Anti-Syntaxin 6 antibody [EP7665] - Golgi Membrane Marker
Description	Rabbit monoclonal [EP7665] to Syntaxin 6 - Golgi Membrane Marker
Host species	Rabbit
Tested applications	Suitable for: WB, IHC-P
Species reactivity	Reacts with: Rat, Human Predicted to work with: Mouse 
Immunogen	Synthetic peptide within Human Syntaxin 6 aa 100-200. The exact sequence is proprietary.
Positive control	Recombinant Human Syntaxin 6 protein (ab112390) can be used as a positive control in WB. PC-12 and 293T cell lysate, Human colon and Human kidney tissues.
General notes	<p>Our RabMAb[®] technology is a patented hybridoma-based technology for making rabbit monoclonal antibodies. For details on our patents, please refer to RabMAb[®] patents.</p> <p>The Life Science industry has been in the grips of a reproducibility crisis for a number of years. Abcam is leading the way in addressing this with our range of recombinant monoclonal antibodies and knockout edited cell lines for gold-standard validation. Please check that this product meets your needs before purchasing.</p> <p>If you have any questions, special requirements or concerns, please send us an inquiry and/or contact our Support team ahead of purchase. Recommended alternatives for this product can be found below, along with publications, customer reviews and Q&As</p>

Properties

Form	Liquid
Storage instructions	Shipped at 4°C. Upon delivery aliquot and store at -20°C. Avoid freeze / thaw cycles.
Storage buffer	pH: 7.2 Preservative: 0.01% Sodium azide Constituents: 9% PBS, 40% Glycerol (glycerin, glycerine), 0.05% BSA, 50% Tissue culture supernatant
Purity	Tissue culture supernatant

Clonality	Monoclonal
Clone number	EP7665
Isotype	IgG

Applications

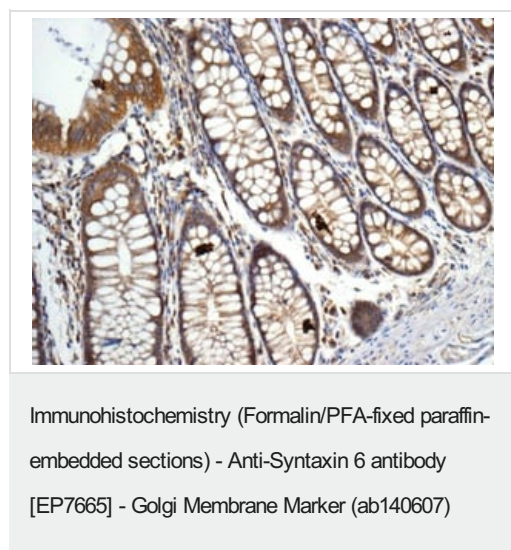
The Abpromise guarantee Our **Abpromise guarantee** covers the use of ab140607 in the following tested applications. The application notes include recommended starting dilutions; optimal dilutions/concentrations should be determined by the end user.

Application	Abreviews	Notes
WB	★★★★☆ (2)	1/1000 - 1/10000. Predicted molecular weight: 29 kDa.
IHC-P		1/100 - 1/250. Perform heat mediated antigen retrieval with citrate buffer pH 6 before commencing with IHC staining protocol.

Target

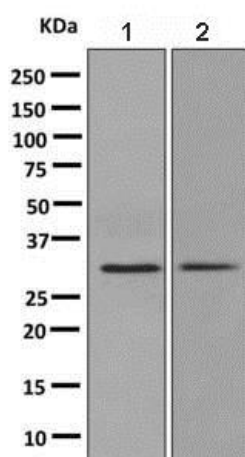
Function	Involved in intracellular vesicle trafficking.
Sequence similarities	Belongs to the syntaxin family. Contains 1 t-SNARE coiled-coil homology domain.
Post-translational modifications	Phosphorylated upon DNA damage, probably by ATM or ATR.
Cellular localization	Golgi apparatus membrane.

Images



Immunohistochemical analysis of paraffin embedded Human colon tissue labelling Syntaxin 6 with ab140607 antibody at a dilution of 1/100.

Perform heat mediated antigen retrieval with citrate buffer pH 6 before commencing with IHC staining protocol.



Western blot - Anti-Syntaxin 6 antibody [EP7665] - Golgi Membrane Marker (ab140607)

All lanes : Anti-Syntaxin 6 antibody [EP7665] - Golgi Membrane Marker (ab140607) at 1/1000 dilution

Lane 1 : PC-12 cell lysate

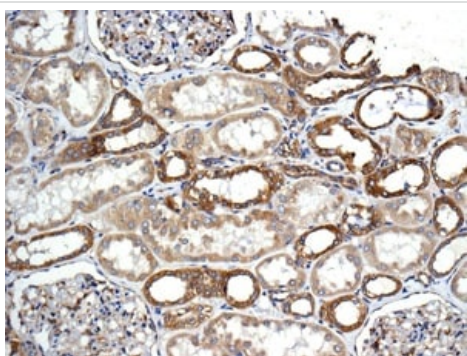
Lane 2 : 293T cell lysate

Lysates/proteins at 10 µg per lane.

Secondary

All lanes : HRP labelled goat anti-rabbit at 1/2000 dilution

Predicted band size: 29 kDa



Immunohistochemistry (Formalin/PFA-fixed paraffin-embedded sections) - Anti-Syntaxin 6 antibody [EP7665] - Golgi Membrane Marker (ab140607)

Immunohistochemical analysis of paraffin embedded Human kidney tissue labelling Syntaxin 6 with ab140607 antibody at a dilution of 1/100.

Perform heat mediated antigen retrieval with citrate buffer pH 6 before commencing with IHC staining protocol.

Please note: All products are "FOR RESEARCH USE ONLY. NOT FOR USE IN DIAGNOSTIC PROCEDURES"

Our Abpromise to you: Quality guaranteed and expert technical support

- Replacement or refund for products not performing as stated on the datasheet
- Valid for 12 months from date of delivery
- Response to your inquiry within 24 hours
- We provide support in Chinese, English, French, German, Japanese and Spanish
- Extensive multi-media technical resources to help you
- We investigate all quality concerns to ensure our products perform to the highest standards

If the product does not perform as described on this datasheet, we will offer a refund or replacement. For full details of the Abpromise, please visit <https://www.abcam.com/abpromise> or contact our technical team.

Terms and conditions

- Guarantee only valid for products bought direct from Abcam or one of our authorized distributors