

Anti-SYT13 antibody ab154695

[2 References](#) [1 Image](#)

Overview

Product name	Anti-SYT13 antibody
Description	Rabbit polyclonal to SYT13
Host species	Rabbit
Tested applications	Suitable for: WB
Species reactivity	Reacts with: Human
Immunogen	Recombinant fragment, corresponding to a region within the amino acids 42-309 of Human SYT13 (UniProt ID: Q7L8C5).
Positive control	NT2D1, U87-MG & SK-N-SH whole cell lysates
General notes	<p>The Life Science industry has been in the grips of a reproducibility crisis for a number of years. Abcam is leading the way in addressing this with our range of recombinant monoclonal antibodies and knockout edited cell lines for gold-standard validation. Please check that this product meets your needs before purchasing.</p> <p>If you have any questions, special requirements or concerns, please send us an inquiry and/or contact our Support team ahead of purchase. Recommended alternatives for this product can be found below, along with publications, customer reviews and Q&As</p>

Properties

Form	Liquid
Storage instructions	Shipped at 4°C. Upon delivery aliquot and store at -20°C or -80°C. Avoid repeated freeze / thaw cycles.
Storage buffer	<p>pH: 7.00</p> <p>Preservative: 0.01% Thimerosal (merthiolate)</p> <p>Constituents: 1.21% Tris, 0.75% Glycine, 20% Glycerol (glycerin, glycerine)</p>
Purity	Immunogen affinity purified
Clonality	Polyclonal
Isotype	IgG

Applications

The Abpromise guarantee

Our **Abpromise guarantee** covers the use of ab154695 in the following tested applications.

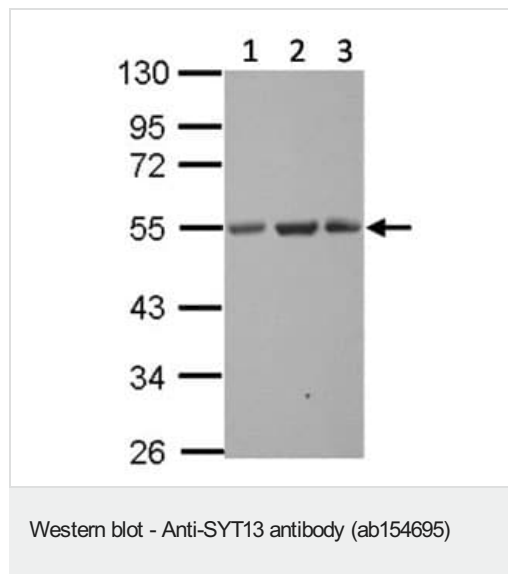
The application notes include recommended starting dilutions; optimal dilutions/concentrations should be determined by the end user.

Application	Abreviews	Notes
WB		1/500 - 1/3000. Predicted molecular weight: 47 kDa.

Target

Function	May be involved in transport vesicle docking to the plasma membrane.
Tissue specificity	Expressed in brain, pancreas and kidney.
Sequence similarities	Belongs to the synaptotagmin family. Contains 2 C2 domains.
Domain	The first C2 domain/C2A does not mediate Ca(2+)-dependent phospholipid binding. The second C2 domain/C2B domain binds phospholipids regardless of whether calcium is present.
Cellular localization	Membrane.

Images



All lanes : Anti-SYT13 antibody (ab154695) at 1/1000 dilution

Lane 1 : NT2D1 whole cell lysate

Lane 2 : U87-MG whole cell lysate

Lane 3 : SK-N-SH whole cell lysate

Lysates/proteins at 30 µg per lane.

Predicted band size: 47 kDa

10% SDS PAGE

Please note: All products are "FOR RESEARCH USE ONLY. NOT FOR USE IN DIAGNOSTIC PROCEDURES"

Our Abpromise to you: Quality guaranteed and expert technical support

- Replacement or refund for products not performing as stated on the datasheet
- Valid for 12 months from date of delivery
- Response to your inquiry within 24 hours
- We provide support in Chinese, English, French, German, Japanese and Spanish

- Extensive multi-media technical resources to help you
- We investigate all quality concerns to ensure our products perform to the highest standards

If the product does not perform as described on this datasheet, we will offer a refund or replacement. For full details of the Abpromise, please visit <https://www.abcam.com/abpromise> or contact our technical team.

Terms and conditions

- Guarantee only valid for products bought direct from Abcam or one of our authorized distributors