

Anti-TAB1 antibody ab151408

[2 References](#) [5 Images](#)

Overview

Product name	Anti-TAB1 antibody
Description	Rabbit polyclonal to TAB1
Host species	Rabbit
Tested applications	Suitable for: WB, IHC-P, ICC/IF
Species reactivity	Reacts with: Mouse, Human
Immunogen	Recombinant fragment corresponding to a region within amino acids 1 and 257 of Human TAB1 (Uniprot ID: Q15750)
Positive control	GL261, C8D30, 293T, A431 and A375 whole cell lysate/extracts. HeLa cells. Human colon cancer tissue.
General notes	<p>The Life Science industry has been in the grips of a reproducibility crisis for a number of years. Abcam is leading the way in addressing this with our range of recombinant monoclonal antibodies and knockout edited cell lines for gold-standard validation. Please check that this product meets your needs before purchasing.</p> <p>If you have any questions, special requirements or concerns, please send us an inquiry and/or contact our Support team ahead of purchase. Recommended alternatives for this product can be found below, along with publications, customer reviews and Q&As</p>

Properties

Form	Liquid
Storage instructions	Shipped at 4°C. Upon delivery aliquot and store at -20°C. Avoid freeze / thaw cycles.
Storage buffer	<p>pH: 7.00</p> <p>Preservative: 0.01% Thimerosal (merthiolate)</p> <p>Constituents: 1.21% Tris, 0.75% Glycine, 10% Glycerol (glycerin, glycerine)</p>
Purity	Immunogen affinity purified
Clonality	Polyclonal
Isotype	IgG

Applications

The Abpromise guarantee

Our **Abpromise guarantee** covers the use of ab151408 in the following tested applications.

The application notes include recommended starting dilutions; optimal dilutions/concentrations should be determined by the end user.

Application	Abreviews	Notes
WB		1/500 - 1/3000. Predicted molecular weight: 55 kDa.
IHC-P		1/100 - 1/1000. Perform heat mediated antigen retrieval with citrate buffer pH 6 before commencing with IHC staining protocol.
ICC/IF		1/100 - 1/1000.

Target

Function

May be an important signaling intermediate between TGFB receptors and MAP3K7/TAK1. May play an important role in mammalian embryogenesis.

Tissue specificity

Ubiquitous.

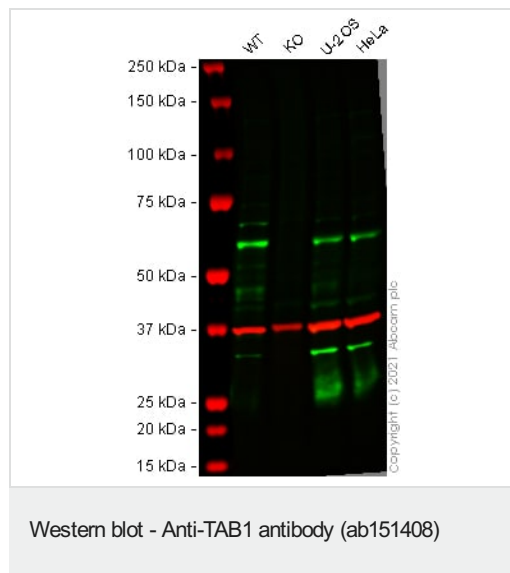
Sequence similarities

Contains 1 PP2C-like domain.

Post-translational modifications

Monoubiquitinated. Deubiquitinated by Y.enterocolitica YopP.

Images



All lanes : Anti-TAB1 antibody (ab151408) at 1/500 dilution

Lane 1 : Wild-type HEK-293T cell lysate

Lane 2 : TAB1 knockout HEK-293T cell lysate

Lane 3 : U-2 OS cell lysate

Lane 4 : HeLa cell lysate

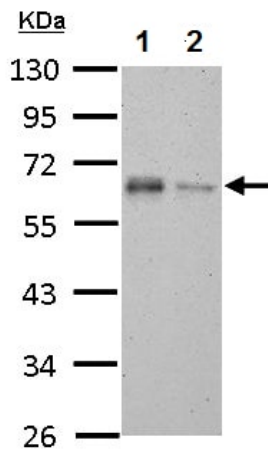
Performed under reducing conditions.

Predicted band size: 55 kDa

Observed band size: 60 kDa

False colour image of Western blot: Anti-TAB1 antibody staining at 1/500 dilution, shown in green; Mouse anti-GAPDH antibody [6C5] ([ab8245](#)) loading control staining at 1/20000 dilution, shown in red. In Western blot, ab151408 was shown to bind specifically to TAB1. A band was observed at 60 kDa in wild-type HEK-293T cell lysates with no signal observed at this size in TAB1 knockout cell line [ab266845](#) (knockout cell lysate [ab258220](#)). To generate this

image, wild-type and TAB1 knockout HEK-293T cell lysates were analysed. First, samples were run on an SDS-PAGE gel then transferred onto a nitrocellulose membrane. Membranes were blocked in 3 % milk in TBS-0.1 % Tween[®] 20 (TBS-T) before incubation with primary antibodies overnight at 4 °C. Blots were washed four times in TBS-T, incubated with secondary antibodies for 1 h at room temperature, washed again four times then imaged. Secondary antibodies used were Goat anti-Rabbit IgG H&L (IRDye[®] 800CW) preabsorbed ([ab216773](#)) and Goat anti-Mouse IgG H&L (IRDye[®] 680RD) preabsorbed ([ab216776](#)) at 1/20000 dilution.



Western blot - Anti-TAB1 antibody (ab151408)

All lanes : Anti-TAB1 antibody (ab151408) at 1/1000 dilution

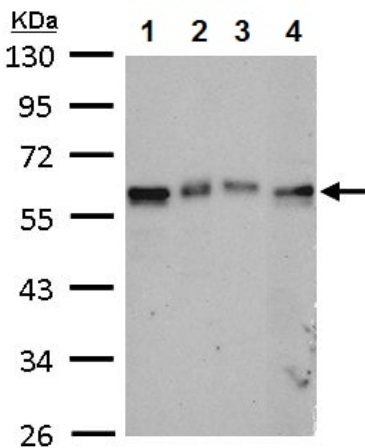
Lane 1 : GL261 whole cell lysate/extract

Lane 2 : C8D30 whole cell lysate/extract

Lysates/proteins at 30 µg per lane.

Predicted band size: 55 kDa

10% SDS-PAGE



Western blot - Anti-TAB1 antibody (ab151408)

All lanes : Anti-TAB1 antibody (ab151408) at 1/1000 dilution

Lane 1 : 293T whole cell lysate/extract

Lane 2 : A431 whole cell lysate/extract

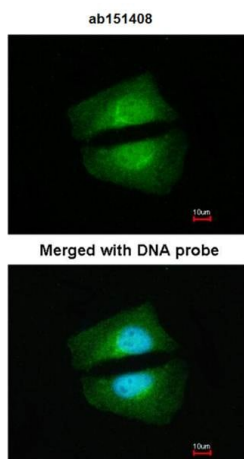
Lane 3 : HeLa whole cell lysate/extract

Lane 4 : A375 whole cell lysate/extract

Lysates/proteins at 30 µg per lane.

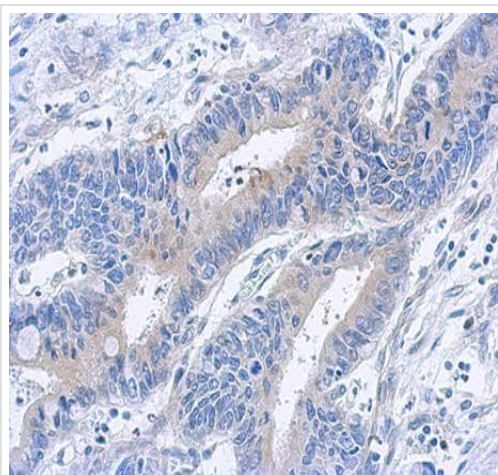
Predicted band size: 55 kDa

10% SDS-PAGE



Immunofluorescence analysis of paraformaldehyde-fixed HeLa cells labeling TAB1 with ab151408 at 1/100 dilution.

Immunocytochemistry/ Immunofluorescence - Anti-TAB1 antibody (ab151408)



Immunohistochemical analysis of paraffin-embedded human colon cancer tissue labeling TAB1 with ab151408 at 1/500 dilution.

Immunohistochemistry (Formalin/PFA-fixed paraffin-embedded sections) - Anti-TAB1 antibody (ab151408)

Please note: All products are "FOR RESEARCH USE ONLY. NOT FOR USE IN DIAGNOSTIC PROCEDURES"

Our Abpromise to you: Quality guaranteed and expert technical support

- Replacement or refund for products not performing as stated on the datasheet
- Valid for 12 months from date of delivery
- Response to your inquiry within 24 hours
- We provide support in Chinese, English, French, German, Japanese and Spanish
- Extensive multi-media technical resources to help you

- We investigate all quality concerns to ensure our products perform to the highest standards

If the product does not perform as described on this datasheet, we will offer a refund or replacement. For full details of the Abpromise, please visit <https://www.abcam.com/abpromise> or contact our technical team.

Terms and conditions

- Guarantee only valid for products bought direct from Abcam or one of our authorized distributors