




Product datasheet

Anti-TAB2 antibody ab172412

[6 References](#) [1 Image](#)

Overview

| | |
|---------------------|--|
| Product name | Anti-TAB2 antibody |
| Description | Mouse polyclonal to TAB2 |
| Host species | Mouse |
| Tested applications | Suitable for: WB |
| Species reactivity | Reacts with: Human Predicted to work with: Mouse, Rat  |
| Immunogen | Recombinant full length protein within Human TAB2 aa 1 to the C-terminus. The exact immunogen sequence used to generate this antibody is proprietary information. If additional detail on the immunogen is needed to determine the suitability of the antibody for your needs, please contact our Scientific Support team to discuss your requirements. Database link: NP_055908  Run BLAST with  Run BLAST with |
| Positive control | TAB2 transfected 293T cell lysate. |
| General notes | <p>The Life Science industry has been in the grips of a reproducibility crisis for a number of years. Abcam is leading the way in addressing this with our range of recombinant monoclonal antibodies and knockout edited cell lines for gold-standard validation. Please check that this product meets your needs before purchasing.</p> <p>If you have any questions, special requirements or concerns, please send us an inquiry and/or contact our Support team ahead of purchase. Recommended alternatives for this product can be found below, along with publications, customer reviews and Q&As</p> |

Properties

| | |
|----------------------|---|
| Form | Liquid |
| Storage instructions | Shipped at 4°C. Store at +4°C short term (1-2 weeks). Upon delivery aliquot. Store at -20°C long term. Avoid freeze / thaw cycle. |
| Storage buffer | pH: 7.4 Constituent: 100% PBS |
| Purity | Protein A purified |
| Clonality | Polyclonal |
| Isotype | IgG |

Applications

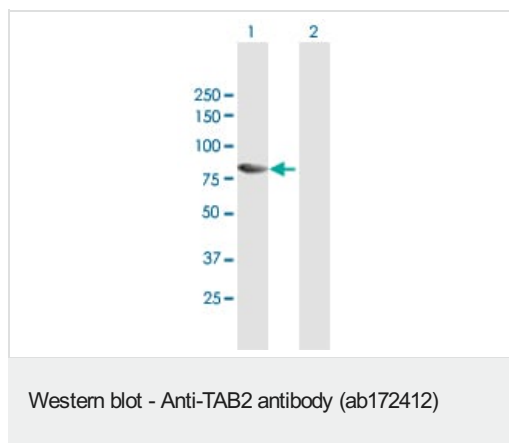
The Abpromise guarantee Our **Abpromise guarantee** covers the use of ab172412 in the following tested applications. The application notes include recommended starting dilutions; optimal dilutions/concentrations should be determined by the end user.

| Application | Abreviews | Notes |
|-------------|-----------|---|
| WB | | Use a concentration of 1 µg/ml. Predicted molecular weight: 76 kDa. |

Target

| | |
|---|--|
| Function | Adapter linking MAP3K7/TAK1 and TRAF6. Promotes MAP3K7 activation in the IL1 signaling pathway. The binding of 'Lys-63'-linked polyubiquitin chains to TAB2 promotes autophosphorylation of MAP3K7 at 'Thr-187'. Involved in heart development. |
| Tissue specificity | Widely expressed. In the embryo, expressed in the ventricular trabeculae, endothelial cells of the conotruncal cushions of the outflow tract and in the endothelial cells lining the developing aortic valves. |
| Involvement in disease | Defects in TAB2 are the cause of congenital heart disease non-syndromic type 2 (CHTD2) [MIM:612863]. It is a disease characterized by congenital developmental abnormalities involving structures of the heart. Clinical features include left ventricular outflow tract obstruction, subaortic stenosis, residual aortic regurgitation, atrial fibrillation, bicuspid aortic valve and aortic dilation. Note=A chromosomal aberration involving TAB2 has been found in a family with congenital heart disease. Translocation t(2;6)(q21;q25). |
| Sequence similarities | Contains 1 CUE domain. Contains 1 RanBP2-type zinc finger. |
| Post-translational modifications | Ubiquitinated; following IL1 stimulation or TRAF6 overexpression. Ubiquitination involves RBCK1 leading to proteasomal degradation. Phosphorylated. |
| Cellular localization | Membrane. Cytoplasm > cytosol. Following IL1 stimulation, translocation occurs from the membrane to cytosol. |

Images



All lanes : Anti-TAB2 antibody (ab172412) at 1 µg/ml

Lane 1 : TAB2 transfected 293T cell lysate

Lane 2 : Non-transfected 293T cell lysate

Lysates/proteins at 15 µl per lane.

Secondary

All lanes : Goat Anti-Mouse IgG (H&L)-HRP Conjugate secondary antibody at 1/2500 dilution

Predicted band size: 76 kDa

Please note: All products are "FOR RESEARCH USE ONLY. NOT FOR USE IN DIAGNOSTIC PROCEDURES"

Our Abpromise to you: Quality guaranteed and expert technical support

- Replacement or refund for products not performing as stated on the datasheet
- Valid for 12 months from date of delivery
- Response to your inquiry within 24 hours
- We provide support in Chinese, English, French, German, Japanese and Spanish
- Extensive multi-media technical resources to help you
- We investigate all quality concerns to ensure our products perform to the highest standards

If the product does not perform as described on this datasheet, we will offer a refund or replacement. For full details of the Abpromise, please visit <https://www.abcam.com/abpromise> or contact our technical team.

Terms and conditions

- Guarantee only valid for products bought direct from Abcam or one of our authorized distributors