

## Product datasheet

### Anti-TACC3 antibody ab245455

[2 Images](#)

#### Overview

---

<b>Product name</b>	Anti-TACC3 antibody
<b>Description</b>	Rabbit polyclonal to TACC3
<b>Host species</b>	Rabbit
<b>Tested applications</b>	<b>Suitable for:</b> IP, WB
<b>Species reactivity</b>	<b>Reacts with:</b> Human
<b>Immunogen</b>	Synthetic peptide within Human TACC3 aa 425-475. The exact sequence is proprietary. NP_006333.1 Database link: <a href="#">Q9Y6A5</a>
<b>Positive control</b>	WB:HeLa and HEK-293T whole cell lysates. IP: HeLa whole cell lysate.
<b>General notes</b>	<p>The Life Science industry has been in the grips of a reproducibility crisis for a number of years. Abcam is leading the way in addressing this with our range of recombinant monoclonal antibodies and knockout edited cell lines for gold-standard validation. Please check that this product meets your needs before purchasing.</p> <p>If you have any questions, special requirements or concerns, please send us an inquiry and/or contact our Support team ahead of purchase. Recommended alternatives for this product can be found below, along with publications, customer reviews and Q&amp;As</p>

#### Properties

---

<b>Form</b>	Liquid
<b>Storage instructions</b>	Shipped at 4°C. Store at +4°C short term (1-2 weeks). Upon delivery aliquot. Store at -20°C long term. Avoid freeze / thaw cycle.
<b>Storage buffer</b>	pH: 6.8 Preservative: 0.09% Sodium azide Constituents: Tris buffered saline, 0.1% BSA
<b>Purity</b>	Immunogen affinity purified
<b>Purification notes</b>	ab245455 was affinity purified using an epitope specific to TACC3 immobilized on solid support.
<b>Clonality</b>	Polyclonal
<b>Isotype</b>	IgG

## Applications

### The Abpromise guarantee

Our **Abpromise guarantee** covers the use of ab245455 in the following tested applications.

The application notes include recommended starting dilutions; optimal dilutions/concentrations should be determined by the end user.

Application	Abreviews	Notes
IP		Use at 2-5 µg/mg of lysate.
WB		1/2000 - 1/10000. Predicted molecular weight: 90 kDa.

## Target

### Function

Plays a role in the microtubule-dependent coupling of the nucleus and the centrosome. Involved in the processes that regulate centrosome-mediated interkinetic nuclear migration (INM) of neural progenitors (By similarity). May be involved in the control of cell growth and differentiation. May contribute to cancer.

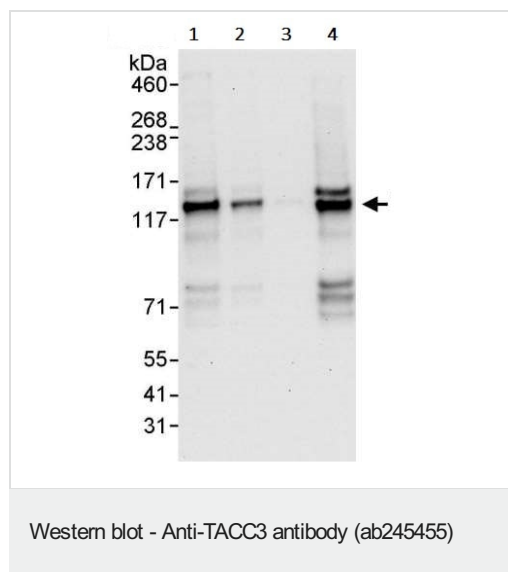
### Sequence similarities

Belongs to the TACC family.

### Cellular localization

Cytoplasm.

## Images



**All lanes** : Anti-TACC3 antibody (ab245455) at 0.04 µg/ml

**Lane 1** : HeLa (human epithelial cell line from cervix adenocarcinoma) whole cell lysate at 50 µg

**Lane 2** : HeLa whole cell lysate at 15 µg

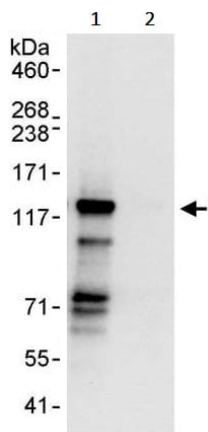
**Lane 3** : HeLa whole cell lysate at 5 µg

**Lane 4** : HEK-293T (human epithelial cell line from embryonic kidney transformed with large T antigen) whole cell lysate at 50 µg

Developed using the ECL technique.

**Predicted band size:** 90 kDa

**Exposure time:** 30 seconds



Immunoprecipitation - Anti-TACC3 antibody  
(ab245455)

TACC3 was immunoprecipitated from HeLa (human epithelial cell line from cervix adenocarcinoma) whole cell lysate (1 mg for IP, 20% of IP loaded) with ab245455 at 3 µg/mg lysate. Western blot was performed from the immunoprecipitate using ab245455 at 0.4 µg/ml.

**Lane 1:** ab245455 IP in HeLa whole cell lysate.

**Lane 2:** Control IgG IP in HeLa whole cell lysate.

Detection: Chemiluminescence with an exposure time of 10 seconds.

**Please note:** All products are "FOR RESEARCH USE ONLY. NOT FOR USE IN DIAGNOSTIC PROCEDURES"

### Our Abpromise to you: Quality guaranteed and expert technical support

- Replacement or refund for products not performing as stated on the datasheet
- Valid for 12 months from date of delivery
- Response to your inquiry within 24 hours
- We provide support in Chinese, English, French, German, Japanese and Spanish
- Extensive multi-media technical resources to help you
- We investigate all quality concerns to ensure our products perform to the highest standards

If the product does not perform as described on this datasheet, we will offer a refund or replacement. For full details of the Abpromise, please visit <https://www.abcam.com/abpromise> or contact our technical team.

### Terms and conditions

- Guarantee only valid for products bought direct from Abcam or one of our authorized distributors