

## Product datasheet


# Anti-TAF15 antibody [EPR9197(B)] ab134916

Recombinant RabMAb

★★★★★ [4 Abreviews](#) [9 References](#) [7 Images](#)

### Overview

---

<b>Product name</b>	Anti-TAF15 antibody [EPR9197(B)]
<b>Description</b>	Rabbit monoclonal [EPR9197(B)] to TAF15
<b>Host species</b>	Rabbit
<b>Tested applications</b>	<b>Suitable for:</b> Flow Cyt (Intra), WB, IHC-P, ICC/IF
<b>Species reactivity</b>	<b>Reacts with:</b> Human <b>Predicted to work with:</b> Mouse, Rat 
<b>Immunogen</b>	Synthetic peptide within Human TAF15 aa 550 to the C-terminus (C terminal). The exact sequence is proprietary. Database link: <a href="#">Q92804</a>
<b>Positive control</b>	HeLa, 293T, Caco 2, and Human fetal kidney lysates; Human urinary bladder carcinoma tissue; HeLa cells
<b>General notes</b>	This product is a recombinant monoclonal antibody, which offers several advantages including: <ul style="list-style-type: none"><li>- High batch-to-batch consistency and reproducibility</li><li>- Improved sensitivity and specificity</li><li>- Long-term security of supply</li><li>- Animal-free production</li></ul> For more information <a href="#">see here</a> . Our RabMAb <sup>®</sup> technology is a patented hybridoma-based technology for making rabbit monoclonal antibodies. For details on our patents, please refer to <a href="#">RabMAb<sup>®</sup> patents</a> .

### Properties

---

<b>Form</b>	Liquid
<b>Storage instructions</b>	Shipped at 4°C. Store at -20°C.
<b>Storage buffer</b>	pH: 7.2 Preservative: 0.01% Sodium azide Constituents: 9% PBS, 40% Glycerol (glycerin, glycerine), 0.05% BSA, 50% Tissue culture supernatant
<b>Purity</b>	Tissue culture supernatant
<b>Clonality</b>	Monoclonal

Clone number                      EPR9197(B)  
Isotype                                IgG

## Applications

**The Abpromise guarantee**            Our **Abpromise guarantee** covers the use of ab134916 in the following tested applications. The application notes include recommended starting dilutions; optimal dilutions/concentrations should be determined by the end user.

Application	Abreviews	Notes
Flow Cyt (Intra)		1/100 - 1/10000. <b>ab172730</b> - Rabbit monoclonal IgG, is suitable for use as an isotype control with this antibody.
WB	★ ★ ★ ★ ☆ (1)	1/10000 - 1/50000. Predicted molecular weight: 62 kDa.
IHC-P		1/100 - 1/250. Perform heat mediated antigen retrieval with citrate buffer pH 6 before commencing with IHC staining protocol.
ICC/IF	★ ★ ★ ★ ★ (1)	1/250 - 1/500.

## Target

**Function**                                RNA and ssDNA-binding protein that may play specific roles during transcription initiation at distinct promoters. Can enter the preinitiation complex together with the RNA polymerase II (Pol II).

**Tissue specificity**                    Ubiquitous. Observed in all fetal and adult tissues.

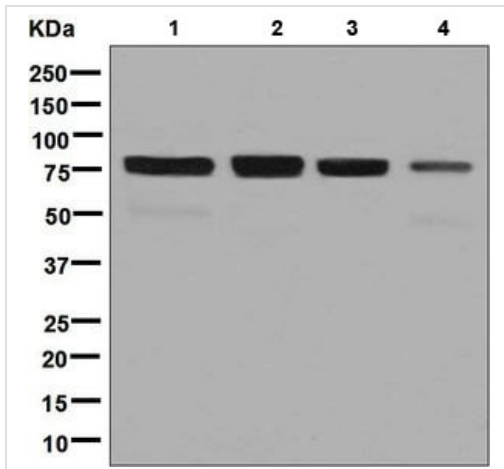
**Involvement in disease**              Note=A chromosomal aberration involving TAF15/TAF2N is found in a form of extraskeletal myxoid chondrosarcomas (EMC). Translocation t(9;17)(q22;q11) with NR4A3.

**Sequence similarities**                 Belongs to the RRM TET family.  
Contains 1 RanBP2-type zinc finger.  
Contains 1 RRM (RNA recognition motif) domain.

**Post-translational modifications**    Dimethylated by PRMT1 at Arg-206 to asymmetric dimethylarginine. The methylation may favor nuclear localization and positive regulation of TAF15 transcriptional activity.  
Phosphorylated upon DNA damage, probably by ATM or ATR.

**Cellular localization**                 Nucleus. Cytoplasm. Shuttles from the nucleus to the cytoplasm.

## Images



Western blot - Anti-TAF15 antibody [EPR9197(B)] (ab134916)

**All lanes** : Anti-TAF15 antibody [EPR9197(B)] (ab134916) at 1/10000 dilution

**Lane 1** : HeLa cell lysate

**Lane 2** : 293T cell lysate

**Lane 3** : Caco 2 cell lysate

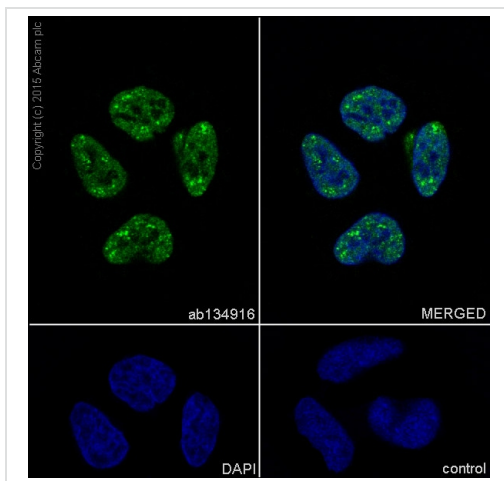
**Lane 4** : Human fetal kidney lysate

Lysates/proteins at 10 µg per lane.

**Secondary**

**All lanes** : HRP-conjugated goat anti-rabbit IgG at 1/2000 dilution

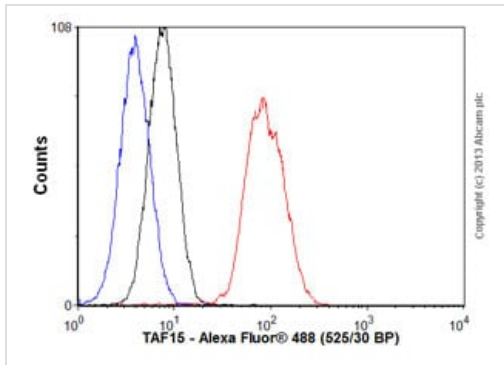
**Predicted band size:** 62 kDa



Immunocytochemistry/ Immunofluorescence - Anti-TAF15 antibody [EPR9197(B)] (ab134916)

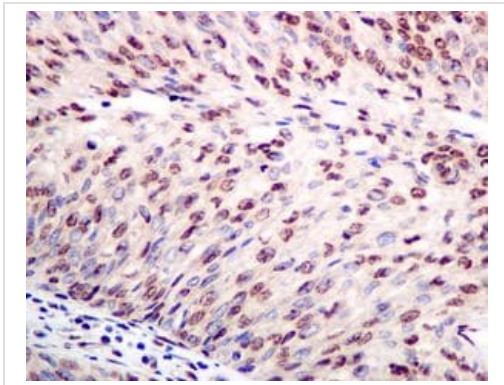
ab134916 staining TAF15 in HeLa (human cervix adenocarcinoma) cells by ICC/IF (Immunocytochemistry/immunofluorescence). Cells were fixed with 4% Paraformaldehyde and permeabilized with 0.1% tritonX-100. Samples were incubated with primary antibody at a dilution of 1/500. A goat anti rabbit IgG (Alexa Fluor® 488) (**ab150077**) was used as the secondary antibody at a dilution of 1/1000. DAPI was used as a nuclear counterstain.

**Negative control 1:** PBS only.



Flow Cytometry (Intracellular) - Anti-TAF15 antibody [EPR9197(B)] (ab134916)

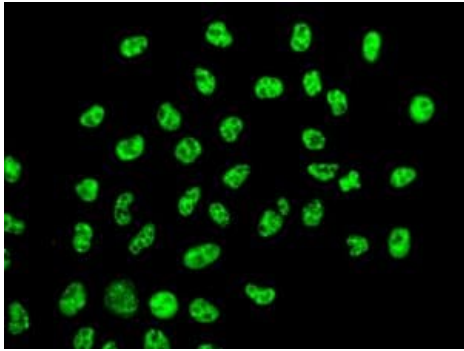
Overlay histogram showing HeLa cells stained with ab134916 (red line). The cells were fixed with 80% methanol (5 min) and then permeabilized with 0.1% PBS-Tween for 20 min. The cells were then incubated in 1x PBS / 10% normal goat serum / 0.3M glycine to block non-specific protein-protein interactions followed by the antibody (ab134916, 1/10000 dilution) for 30 min at 22°C. The secondary antibody used was Alexa Fluor® 488 goat anti-rabbit IgG (H&L) (**ab150077**) at 1/2000 dilution for 30 min at 22°C. Isotype control antibody (black line) was rabbit IgG (monoclonal) (0.1µg/1x10<sup>6</sup> cells) used under the same conditions. Unlabelled sample (blue line) was also used as a control. Acquisition of >5,000 events were collected using a 20mW Argon ion laser (488nm) and 525/30 bandpass filter.



Immunohistochemistry (Formalin/PFA-fixed paraffin-embedded sections) - Anti-TAF15 antibody [EPR9197(B)] (ab134916)

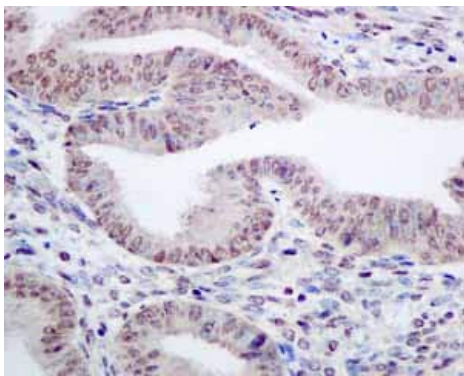
Immunohistochemical analysis of TAF15 in paraffin embedded Human urinary bladder carcinoma tissue, using ab134916 at a 1/100 dilution.

Perform heat mediated antigen retrieval with citrate buffer pH 6 before commencing with IHC staining protocol.



Immunofluorescent analysis of TAF15 in HeLa cells, using ab134916 at a 1/250 dilution.

Immunocytochemistry/ Immunofluorescence - Anti-TAF15 antibody [EPR9197(B)] (ab134916)



Immunohistochemical analysis using ab134916 showing positive staining in Normal human uterus tissue.

Perform heat mediated antigen retrieval with citrate buffer pH 6 before commencing with IHC staining protocol.

Immunohistochemistry (Formalin/PFA-fixed paraffin-embedded sections) - Anti-TAF15 antibody [EPR9197(B)] (ab134916)

Why choose a recombinant antibody?

**Research with confidence**  
Consistent and reproducible results

**Long-term and scalable supply**  
Recombinant technology

**Success from the first experiment**  
Confirmed specificity

**Ethical standards compliant**  
Animal-free production

Anti-TAF15 antibody [EPR9197(B)] (ab134916)

**Please note:** All products are "FOR RESEARCH USE ONLY. NOT FOR USE IN DIAGNOSTIC PROCEDURES"

### Our Abpromise to you: Quality guaranteed and expert technical support

---

- Replacement or refund for products not performing as stated on the datasheet
- Valid for 12 months from date of delivery
- Response to your inquiry within 24 hours
- We provide support in Chinese, English, French, German, Japanese and Spanish
- Extensive multi-media technical resources to help you
- We investigate all quality concerns to ensure our products perform to the highest standards

If the product does not perform as described on this datasheet, we will offer a refund or replacement. For full details of the Abpromise, please visit <https://www.abcam.com/abpromise> or contact our technical team.

### Terms and conditions

---

- Guarantee only valid for products bought direct from Abcam or one of our authorized distributors