

### Anti-Tal1 antibody ab155195

★★★★★ [1 Abreviews](#) [3 References](#) [4 Images](#)

#### Overview

<b>Product name</b>	Anti-Tal1 antibody
<b>Description</b>	Rabbit polyclonal to Tal1
<b>Host species</b>	Rabbit
<b>Tested applications</b>	<b>Suitable for:</b> WB, IHC-P, IP
<b>Species reactivity</b>	<b>Reacts with:</b> Mouse, Human
<b>Immunogen</b>	Synthetic peptide, corresponding to a region within C terminal amino acids 252-331 of Human Tal1 (Uniprot ID: P17542).
<b>Positive control</b>	WB: H1299 cell lysate; IHC-P: Mouse spleen tissue, A549 xenograft; IP: HEK-293T cell lysate.
<b>General notes</b>	<p>The Life Science industry has been in the grips of a reproducibility crisis for a number of years. Abcam is leading the way in addressing this with our range of recombinant monoclonal antibodies and knockout edited cell lines for gold-standard validation. Please check that this product meets your needs before purchasing.</p> <p>If you have any questions, special requirements or concerns, please send us an inquiry and/or contact our Support team ahead of purchase. Recommended alternatives for this product can be found below, along with publications, customer reviews and Q&amp;As</p>

#### Properties

<b>Form</b>	Liquid
<b>Storage instructions</b>	Shipped at 4°C. Store at +4°C short term (1-2 weeks). Upon delivery aliquot. Store at -20°C or -80°C. Avoid freeze / thaw cycle.
<b>Storage buffer</b>	<p>pH: 7.00</p> <p>Preservative: 0.01% Thimerosal (merthiolate)</p> <p>Constituents: 78.99% PBS, 1% BSA, 20% Glycerol (glycerin, glycerine)</p>
<b>Purity</b>	Immunogen affinity purified
<b>Clonality</b>	Polyclonal
<b>Isotype</b>	IgG

#### Applications

## The Abpromise guarantee

Our **Abpromise guarantee** covers the use of ab155195 in the following tested applications.

The application notes include recommended starting dilutions; optimal dilutions/concentrations should be determined by the end user.

Application	Abreviews	Notes
WB		1/500 - 1/3000. Predicted molecular weight: 34 kDa.
IHC-P	★★★★★ (1)	1/100 - 1/1000. Suggested antigen retrieval using heat mediated 10mM Citrate buffer (pH6.0) or Tris-EDTA buffer (pH8.0).
IP		1/100 - 1/500.

## Target

### Function

Implicated in the genesis of hemopoietic malignancies. It may play an important role in hemopoietic differentiation. Serves as a positive regulator of erythroid differentiation.

### Tissue specificity

Leukemic stem cell.

### Involvement in disease

Note=A chromosomal aberration involving TAL1 may be a cause of some T-cell acute lymphoblastic leukemias (T-ALL). Translocation t(1;14)(p32;q11) with T-cell receptor alpha chain (TCRA) genes.

### Sequence similarities

Contains 1 basic helix-loop-helix (bHLH) domain.

### Domain

The helix-loop-helix domain is necessary and sufficient for the interaction with DRG1.

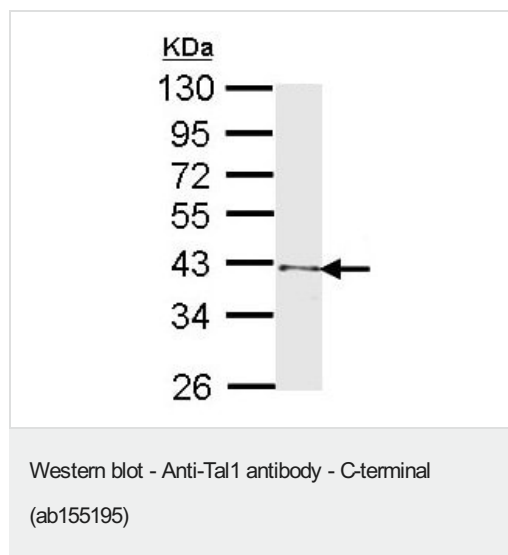
### Post-translational modifications

Phosphorylated on serine residues. Phosphorylation of Ser-122 is strongly stimulated by hypoxia. Ubiquitinated; subsequent to hypoxia-dependent phosphorylation of Ser-122, ubiquitination targets the protein for rapid degradation via the ubiquitin system. This process may be characteristic for microvascular endothelial cells, since it could not be observed in large vessel endothelial cells.

### Cellular localization

Nucleus.

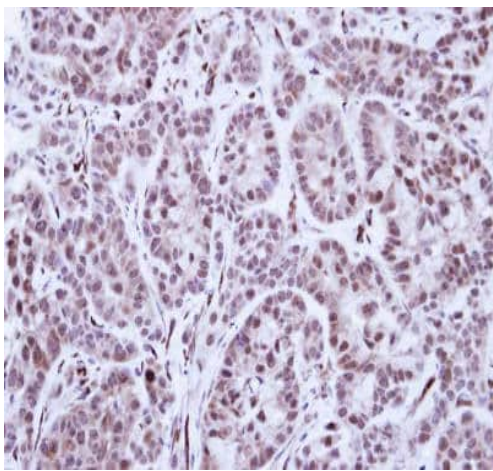
## Images



Anti-Tal1 antibody (ab155195) at 1/1000 dilution + H1299 (human non-small cell lung carcinoma cell line) whole cell lysate at 30 µg

**Predicted band size:** 34 kDa

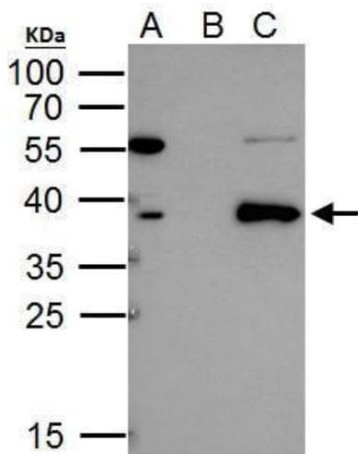
10% SDS PAGE



Immunohistochemistry (Formalin/PFA-fixed paraffin-embedded sections) - Anti-Tal1 antibody - C-terminal (ab155195)

Immunohistochemical analysis of paraffin-embedded A549 xenograft tissue staining Tal1 with ab155195 at 1/100 dilution.

Antigen Retrieval: EDTA based buffer, pH 8.0, 15min.



Immunoprecipitation - Anti-Tal1 antibody (ab155195)

TAL1 antibody immunoprecipitates TAL1 protein in IP experiments.

IP Sample: HEK-293T (human epithelial cell line from embryonic kidney transformed with large T antigen) whole cell lysate.

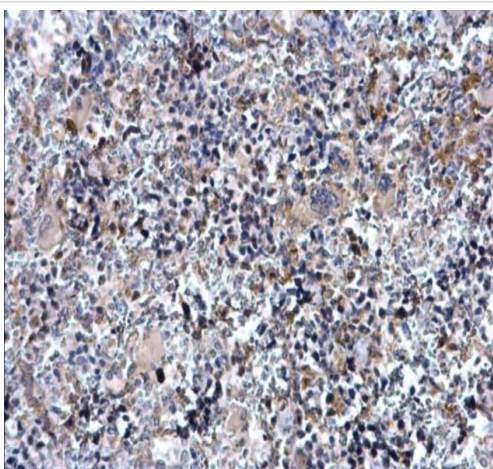
A: HEK-293T whole cell lysate. 40 µg.

B: Control with 2 µg of preimmune rabbit IgG.

C: Immunoprecipitate of TAL1 protein by 2 µg of ab155195.

12% SDS-PAGE

The immunoprecipitated TAL1 protein was detected by ab155195 at 1/1000 dilution, followed by anti-rabbit IgG antibody.



Immunohistochemistry (Formalin/PFA-fixed paraffin-embedded sections) - Anti-Tal1 antibody (ab155195)

Immunohistochemical analysis of paraffin-embedded mouse spleen tissue staining Tal1 at cytosol and nucleus with ab155195 at 1/500 dilution.

Antigen Retrieval: EDTA based buffer, pH 8.0, 15min.

**Please note:** All products are "FOR RESEARCH USE ONLY. NOT FOR USE IN DIAGNOSTIC PROCEDURES"

### **Our Abpromise to you: Quality guaranteed and expert technical support**

---

- Replacement or refund for products not performing as stated on the datasheet
- Valid for 12 months from date of delivery
- Response to your inquiry within 24 hours
  
- We provide support in Chinese, English, French, German, Japanese and Spanish
- Extensive multi-media technical resources to help you
- We investigate all quality concerns to ensure our products perform to the highest standards

If the product does not perform as described on this datasheet, we will offer a refund or replacement. For full details of the Abpromise, please visit <https://www.abcam.com/abpromise> or contact our technical team.

### **Terms and conditions**

---

- Guarantee only valid for products bought direct from Abcam or one of our authorized distributors