


Product datasheet

Anti-Tbp7 antibody ab140515

[5 References](#) [3 Images](#)

Overview

Product name	Anti-Tbp7 antibody
Description	Rabbit polyclonal to Tbp7
Host species	Rabbit
Tested applications	Suitable for: IHC-P, WB, IP
Species reactivity	Reacts with: Human Predicted to work with: Mouse, Rat, Rabbit, Horse, Guinea pig, Cow, Dog, Xenopus laevis, Chimpanzee, Drosophila melanogaster, Zebrafish, Rhesus monkey, Gorilla, Chinese hamster, Orangutan, Xenopus tropicalis 
Immunogen	Synthetic peptide corresponding to Human Tbp7 aa 350-450. Database link: P43686
Positive control	WB: 293T, HeLa and Jurkat whole cell lysate (ab7899). IHC-P: Human ovarian carcinoma tissue. IP: 293T cell lysate.
General notes	<p>The Life Science industry has been in the grips of a reproducibility crisis for a number of years. Abcam is leading the way in addressing this with our range of recombinant monoclonal antibodies and knockout edited cell lines for gold-standard validation. Please check that this product meets your needs before purchasing.</p> <p>If you have any questions, special requirements or concerns, please send us an inquiry and/or contact our Support team ahead of purchase. Recommended alternatives for this product can be found below, along with publications, customer reviews and Q&As</p>

Properties

Form	Liquid
Storage instructions	Shipped at 4°C. Store at +4°C.
Storage buffer	pH: 7 Preservative: 0.09% Sodium azide Constituent: 99% Tris citrate/phosphate
Purity	pH: 7-8 Immunogen affinity purified
Purification notes	ab140515 was affinity purified using an epitope specific to Tbp7 immobilized on a solid support.

Clonality Polyclonal
Isotype IgG

Applications

The Abpromise guarantee Our **Abpromise guarantee** covers the use of ab140515 in the following tested applications. The application notes include recommended starting dilutions; optimal dilutions/concentrations should be determined by the end user.

Application	Abreviews	Notes
IHC-P		1/500 - 1/2000. Perform heat mediated antigen retrieval with citrate buffer pH 6 before commencing with IHC staining protocol.
WB		1/1000 - 1/5000. Predicted molecular weight: 47 kDa.
IP		Use at 2-10 µg/mg of lysate.

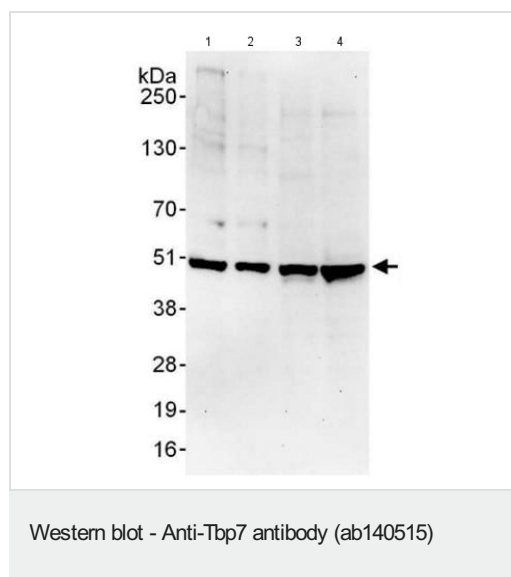
Target

Function The 26S protease is involved in the ATP-dependent degradation of ubiquitinated proteins. The regulatory (or ATPase) complex confers ATP dependency and substrate specificity to the 26S complex.

Sequence similarities Belongs to the AAA ATPase family.

Cellular localization Cytoplasm. Nucleus.

Images



All lanes : Anti-Tbp7 antibody (ab140515) at 0.4 µg/ml

Lane 1 : 293T whole cell lysate at 50 µg

Lane 2 : 293T whole cell lysate at 15 µg

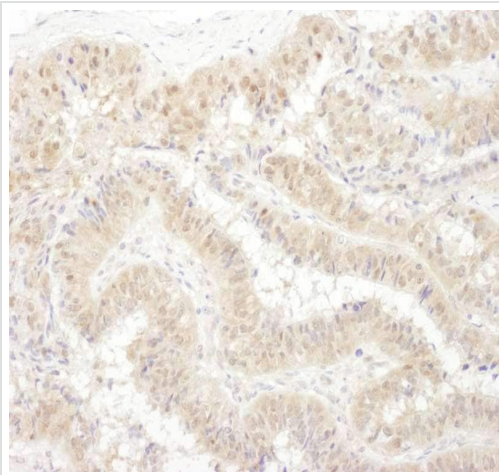
Lane 3 : HeLa whole cell lysate at 50 µg

Lane 4 : Jurkat whole cell lysate at 50 µg

Developed using the ECL technique.

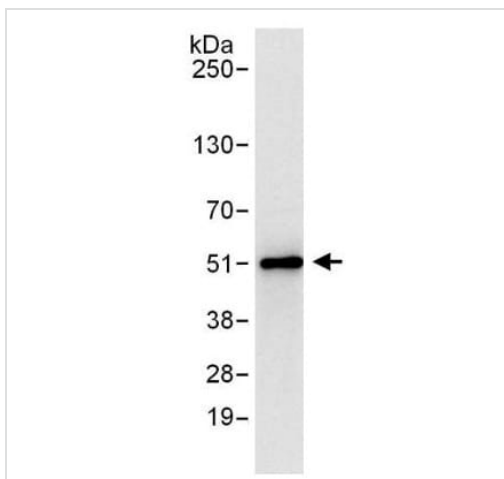
Predicted band size: 47 kDa

Exposure time: 30 seconds



Immunohistochemical analysis of formalin-fixed, paraffin-embedded human ovarian carcinoma tissue labeling Tbp7 with ab140515 at a 1/1000 dilution.

Immunohistochemistry (Formalin/PFA-fixed paraffin-embedded sections) - Anti-Tbp7 antibody (ab140515)



Immunoprecipitation of Tbp7 from 293T whole cell lysate using ab140515 at 6 $\mu\text{g}/\text{mg}$ lysate (1 mg of lysate for IP; 20% of IP loaded).

For blotting immunoprecipitated Tbp7, ab140515 was used at 1 $\mu\text{g}/\text{ml}$.

Detection: chemiluminescence with an exposure time of 3 seconds.

Immunoprecipitation - Anti-Tbp7 antibody (ab140515)

Please note: All products are "FOR RESEARCH USE ONLY. NOT FOR USE IN DIAGNOSTIC PROCEDURES"

Our Abpromise to you: Quality guaranteed and expert technical support

- Replacement or refund for products not performing as stated on the datasheet
- Valid for 12 months from date of delivery
- Response to your inquiry within 24 hours
- We provide support in Chinese, English, French, German, Japanese and Spanish
- Extensive multi-media technical resources to help you
- We investigate all quality concerns to ensure our products perform to the highest standards

If the product does not perform as described on this datasheet, we will offer a refund or replacement. For full details of the Abpromise, please visit <https://www.abcam.com/abpromise> or contact our technical team.

Terms and conditions

- Guarantee only valid for products bought direct from Abcam or one of our authorized distributors