

Product datasheet

Anti-TC21 antibody [EM-50] ab234145

2 Images

Overview

Product name	Anti-TC21 antibody [EM-50]
Description	Mouse monoclonal [EM-50] to TC21
Host species	Mouse
Specificity	This antibody does not react with R-Ras1, H-Ras, K-Ras and N-Ras.
Tested applications	Suitable for: Flow Cyt (Intra), ICC/IF
Species reactivity	Reacts with: Human
Immunogen	Full length protein corresponding to Human TC21. Database link: P62070
Positive control	ICC/IF: TC21 transfected COS cells. Flow Cyt (Intra): TC21-GFP transfected HEK-293 cells.
General notes	<p>The Life Science industry has been in the grips of a reproducibility crisis for a number of years. Abcam is leading the way in addressing this with our range of recombinant monoclonal antibodies and knockout edited cell lines for gold-standard validation. Please check that this product meets your needs before purchasing.</p> <p>If you have any questions, special requirements or concerns, please send us an inquiry and/or contact our Support team ahead of purchase. Recommended alternatives for this product can be found below, along with publications, customer reviews and Q&As</p>

Properties

Form	Liquid
Storage instructions	Shipped at 4°C. Store at +4°C short term (1-2 weeks). Store at +4°C. Do Not Freeze.
Storage buffer	pH: 7.40 Preservative: 0.0975% Sodium azide Constituent: PBS
Purity	Protein A purified
Purification notes	Purity >95% by SDS-PAGE.
Clonality	Monoclonal
Clone number	EM-50
Isotype	IgG1

Applications

The Abpromise guarantee

Our **Abpromise guarantee** covers the use of ab234145 in the following tested applications.

The application notes include recommended starting dilutions; optimal dilutions/concentrations should be determined by the end user.

Application	Abreviews	Notes
Flow Cyt (Intra)		Use a concentration of 1 - 4 µg/ml.
ICC/IF		Use at an assay dependent concentration.

Target

Function

It is a plasma membrane-associated GTP-binding protein with GTPase activity. Might transduce growth inhibitory signals across the cell membrane, exerting its effect through an effector shared with the Ras proteins but in an antagonistic fashion.

Tissue specificity

Ubiquitously present in all tissues examined, with the highest levels in heart, placenta, and skeletal muscle. Moderate levels in lung and liver; low levels in brain, kidney, and pancreas.

Involvement in disease

Ovarian cancer

Sequence similarities

Belongs to the small GTPase superfamily. Ras family.

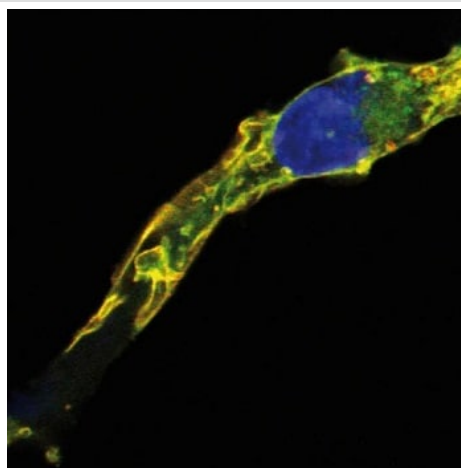
Post-translational modifications

May be post-translationally modified by both palmitoylation and polyisoprenylation.

Cellular localization

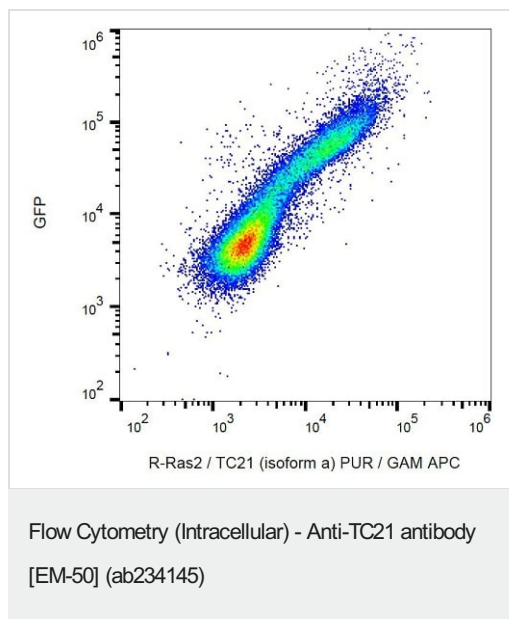
Cell membrane. Inner surface of plasma membrane possibly with attachment requiring acylation of the C-terminal cysteine (By similarity with RAS).

Images



Colocalization of TC21 transfected COS cells stained for TC21 (red) and GFP (green) using ab234145 in ICC/IF.

Immunocytochemistry/ Immunofluorescence - Anti-TC21 antibody [EM-50] (ab234145)



Intracellular staining of TC21 in TC21-GFP transfected HEK-293 (Human epithelial cell line from embryonic kidney) cells using ab234145 followed by a Goat anti-mouse-APC conjugated antibody.

Please note: All products are "FOR RESEARCH USE ONLY. NOT FOR USE IN DIAGNOSTIC PROCEDURES"

Our Abpromise to you: Quality guaranteed and expert technical support

- Replacement or refund for products not performing as stated on the datasheet
- Valid for 12 months from date of delivery
- Response to your inquiry within 24 hours
- We provide support in Chinese, English, French, German, Japanese and Spanish
- Extensive multi-media technical resources to help you
- We investigate all quality concerns to ensure our products perform to the highest standards

If the product does not perform as described on this datasheet, we will offer a refund or replacement. For full details of the Abpromise, please visit <https://www.abcam.com/abpromise> or contact our technical team.

Terms and conditions

- Guarantee only valid for products bought direct from Abcam or one of our authorized distributors