


Product datasheet

Anti-TCF-25 antibody [PCRP-TCF25-1A11] ab277101

[2 Images](#)

Overview

Product name	Anti-TCF-25 antibody [PCRP-TCF25-1A11]
Description	Mouse monoclonal [PCRP-TCF25-1A11] to TCF-25
Host species	Mouse
Tested applications	Suitable for: Protein Array, Flow Cyt
Species reactivity	Reacts with: Human Predicted to work with: Mouse, Rat 
Immunogen	Recombinant full length protein corresponding to Human TCF-25 aa 1-676. Database link: Q9BQ70
Positive control	Flow cyt: HeLa cells.
General notes	<p>The Life Science industry has been in the grips of a reproducibility crisis for a number of years. Abcam is leading the way in addressing this with our range of recombinant monoclonal antibodies and knockout edited cell lines for gold-standard validation. Please check that this product meets your needs before purchasing.</p> <p>If you have any questions, special requirements or concerns, please send us an inquiry and/or contact our Support team ahead of purchase. Recommended alternatives for this product can be found below, along with publications, customer reviews and Q&As</p>

Properties

Form	Liquid
Storage instructions	Shipped at 4°C. Store at +4°C short term (1-2 weeks). Upon delivery aliquot. Store at -20°C. Avoid freeze / thaw cycle.
Storage buffer	Preservative: 0.05% Sodium azide Constituents: 0.05% BSA, 99.9% PBS
Purity	Protein A/G purified
Purification notes	Purified from bioreactor concentrate
Clonality	Monoclonal
Clone number	PCRP-TCF25-1A11
Isotype	IgG2a

Applications

The Abpromise guarantee

Our **Abpromise guarantee** covers the use of ab277101 in the following tested applications.

The application notes include recommended starting dilutions; optimal dilutions/concentrations should be determined by the end user.

Application	Abreviews	Notes
Protein Array		Use at an assay dependent concentration.
Flow Cyt		Use 1-2 μ g for 10 ⁶ cells.

Target

Function

May play a role in cell death control. Acts as a transcriptional repressor. Has been shown to repress transcription of SRF in vitro and so may play a role in heart development.

Tissue specificity

In the embryo, widely expressed with highest levels in brain. In the adult, highest expression is found in the heart.

Sequence similarities

Belongs to the TCF25 family.

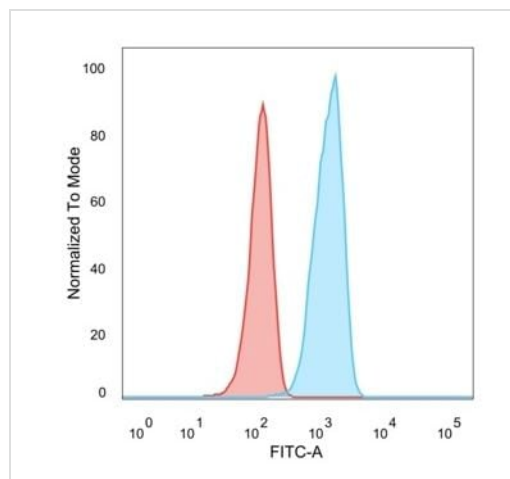
Domain

The C-terminal region mediates transcriptional repression.

Cellular localization

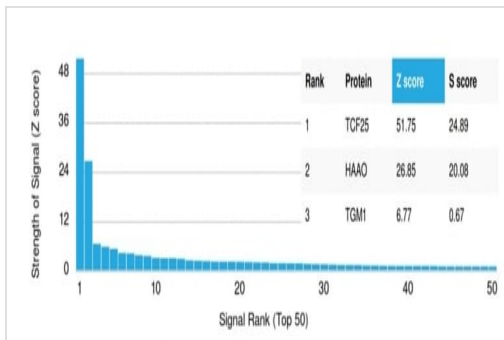
Nucleus. Some staining in the cytosol.

Images



Flow cytometry analysis of PFA-fixed HeLa (human epithelial cell line from cervix adenocarcinoma) cells labeling TCF-25 using ab277101 at 2 μ g / 10⁶ cells followed by goat anti-mouse IgG-CF488 (blue); unstained cells (red).

Flow Cytometry - Anti-TCF-25 antibody [PCRP-TCF25-1A11] (ab277101)



Protein Array - Anti-TCF-25 antibody [PCRP-TCF25-1A11] (ab277101)

Analysis of Protein Array containing more than 19,000 full-length human proteins using ab277101.

Z- and S- Score: The Z-score represents the strength of a signal that a monoclonal antibody (MAb) (in combination with a fluorescently-tagged anti-IgG secondary antibody) produces when binding to a particular protein on the HuProt™ array. Z-scores are described in units of standard deviations (SD's) above the mean value of all signals generated on that array. If targets on HuProt™ are arranged in descending order of the Z-score, the S-score is the difference (also in units of SD's) between the Z-score. S-score therefore represents the relative target specificity of a MAb to its intended target. A MAb is considered to specific to its intended target, if the MAb has an S-score of at least 2.5. For example, if a MAb binds to protein X with a Z-score of 43 and to protein Y with a Z-score of 14, then the S-score for the binding of that MAb to protein X is equal to 29.

Please note: All products are "FOR RESEARCH USE ONLY. NOT FOR USE IN DIAGNOSTIC PROCEDURES"

Our Abpromise to you: Quality guaranteed and expert technical support

- Replacement or refund for products not performing as stated on the datasheet
- Valid for 12 months from date of delivery
- Response to your inquiry within 24 hours
- We provide support in Chinese, English, French, German, Japanese and Spanish
- Extensive multi-media technical resources to help you
- We investigate all quality concerns to ensure our products perform to the highest standards

If the product does not perform as described on this datasheet, we will offer a refund or replacement. For full details of the Abpromise, please visit <https://www.abcam.com/abpromise> or contact our technical team.

Terms and conditions

- Guarantee only valid for products bought direct from Abcam or one of our authorized distributors