

## Product datasheet

# Anti-TCF21 antibody [EPR13449] ab182134

Recombinant RabMAb

★★★★☆ [1 Abreviews](#) [2 References](#) [4 Images](#)

### Overview

<b>Product name</b>	Anti-TCF21 antibody [EPR13449]
<b>Description</b>	Rabbit monoclonal [EPR13449] to TCF21
<b>Host species</b>	Rabbit
<b>Tested applications</b>	<b>Suitable for:</b> WB, IP, Flow Cyt (Intra)
<b>Species reactivity</b>	<b>Reacts with:</b> Human
<b>Immunogen</b>	Synthetic peptide. This information is proprietary to Abcam and/or its suppliers.
<b>Positive control</b>	HeLa and 293 cell lysates; HeLa cells.
<b>General notes</b>	<p>This product is a recombinant monoclonal antibody, which offers several advantages including:</p> <ul style="list-style-type: none"><li>- High batch-to-batch consistency and reproducibility</li><li>- Improved sensitivity and specificity</li><li>- Long-term security of supply</li><li>- Animal-free production</li></ul> <p>For more information <a href="#">see here</a>.</p> <p>Our RabMAb<sup>®</sup> technology is a patented hybridoma-based technology for making rabbit monoclonal antibodies. For details on our patents, please refer to <a href="#">RabMAb<sup>®</sup> patents</a>.</p>

### Properties

<b>Form</b>	Liquid
<b>Storage instructions</b>	Shipped at 4°C. Store at +4°C short term (1-2 weeks). Upon delivery aliquot. Store at -20°C long term. Avoid freeze / thaw cycle.
<b>Storage buffer</b>	Preservative: 0.01% Sodium azide Constituents: 40% Glycerol (glycerin, glycerine), 59% PBS, 0.05% BSA
<b>Purity</b>	Protein A purified
<b>Clonality</b>	Monoclonal
<b>Clone number</b>	EPR13449
<b>Isotype</b>	IgG

### Applications

## Applications

### The Abpromise guarantee

Our **Abpromise guarantee** covers the use of ab182134 in the following tested applications.

The application notes include recommended starting dilutions; optimal dilutions/concentrations should be determined by the end user.

Application	Abreviews	Notes
WB		1/1000 - 1/10000. Detects a band of approximately 26 kDa (predicted molecular weight: 20 kDa).
IP	★★★★★ (1)	1/70.
Flow Cyt (Intra)		1/130. <b>ab172730</b> - Rabbit monoclonal IgG, is suitable for use as an isotype control with this antibody.

## Target

### Function

Involved in epithelial-mesenchymal interactions in kidney and lung morphogenesis that include epithelial differentiation and branching morphogenesis. May play a role in the specification or differentiation of one or more subsets of epicardial cell types.

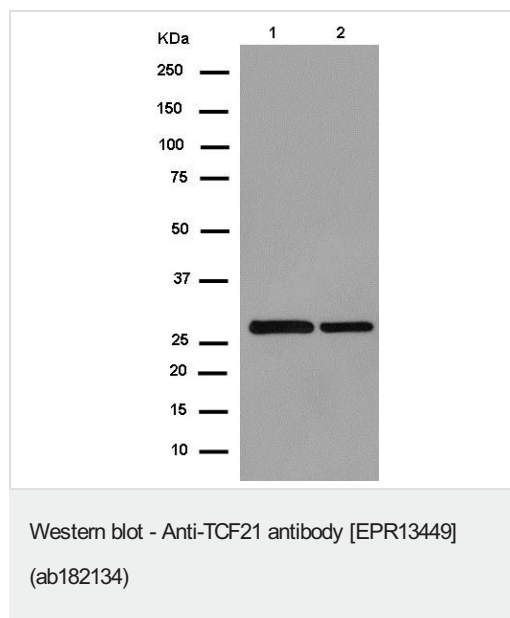
### Sequence similarities

Contains 1 basic helix-loop-helix (bHLH) domain.

### Cellular localization

Nucleus.

## Images



**All lanes** : Anti-TCF21 antibody [EPR13449] (ab182134) at 1/5000 dilution

**Lane 1** : HeLa cell lysate

**Lane 2** : 293 cell lysate

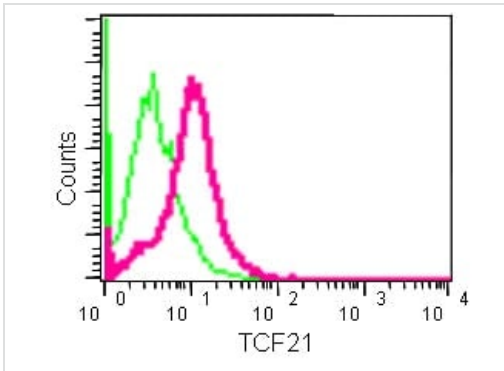
Lysates/proteins at 20 µg per lane.

### Secondary

**All lanes** : Goat Anti-Rabbit IgG, (H+L), Peroxidase conjugate at 1/1000 dilution

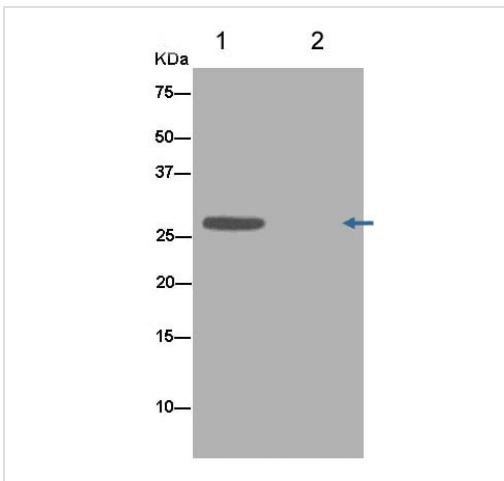
**Predicted band size:** 20 kDa

**Observed band size:** 26 kDa



Flow Cytometry (Intracellular) - Anti-TCF21 antibody [EPR13449] (ab182134)


Intracellular flow cytometric analysis of 2% paraformaldehyde-fixed HeLa cells labeling TCF21 with ab182134 at 1/130 dilution (red) compared to a Rabbit monoclonal IgG isotype control (green), followed by Goat anti rabbit IgG (FITC) secondary at 1/150 dilution.



Immunoprecipitation - Anti-TCF21 antibody [EPR13449] (ab182134)

Western blot analysis of immunoprecipitation pellet from 293 cell lysate immunoprecipitated using ab182134 at 1/70 dilution (Lane 1). Lane 2: Negative control. Secondary: Anti-Rabbit IgG (HRP), specific to the non-reduced form of IgG at 1/1500 dilution.

**Why choose a recombinant antibody?**

 <p><b>Research with confidence</b> Consistent and reproducible results</p>	 <p><b>Long-term and scalable supply</b> Recombinant technology</p>
 <p><b>Success from the first experiment</b> Confirmed specificity</p>	 <p><b>Ethical standards compliant</b> Animal-free production</p>

Anti-TCF21 antibody [EPR13449] (ab182134)

**Please note:** All products are "FOR RESEARCH USE ONLY. NOT FOR USE IN DIAGNOSTIC PROCEDURES"

### **Our Abpromise to you: Quality guaranteed and expert technical support**

---

- Replacement or refund for products not performing as stated on the datasheet
- Valid for 12 months from date of delivery
- Response to your inquiry within 24 hours
  
- We provide support in Chinese, English, French, German, Japanese and Spanish
- Extensive multi-media technical resources to help you
- We investigate all quality concerns to ensure our products perform to the highest standards

If the product does not perform as described on this datasheet, we will offer a refund or replacement. For full details of the Abpromise, please visit <https://www.abcam.com/abpromise> or contact our technical team.

### **Terms and conditions**

---

- Guarantee only valid for products bought direct from Abcam or one of our authorized distributors