

Product datasheet

Anti-Tcl1 antibody [TCL1/2079] ab268137

4 Images

Overview

| | |
|----------------------------|---|
| Product name | Anti-Tcl1 antibody [TCL1/2079] |
| Description | Mouse monoclonal [TCL1/2079] to Tcl1 |
| Host species | Mouse |
| Tested applications | Suitable for: WB, IHC-P, Protein Array |
| Species reactivity | Reacts with: Human |
| Immunogen | Recombinant fragment within Human Tcl1 aa 2-109. The exact sequence is proprietary. Database link: P56279 |
| Positive control | IHC-P: Human lymph node and tonsil tissue. WB: Raji cell lysate. |
| General notes | <p>The Life Science industry has been in the grips of a reproducibility crisis for a number of years. Abcam is leading the way in addressing this with our range of recombinant monoclonal antibodies and knockout edited cell lines for gold-standard validation. Please check that this product meets your needs before purchasing.</p> <p>If you have any questions, special requirements or concerns, please send us an inquiry and/or contact our Support team ahead of purchase. Recommended alternatives for this product can be found below, along with publications, customer reviews and Q&As</p> |

Properties

| | |
|-----------------------------|---|
| Form | Liquid |
| Storage instructions | Shipped at 4°C. Store at +4°C short term (1-2 weeks). Upon delivery aliquot. Store at -20°C long term. Avoid freeze / thaw cycle. |
| Storage buffer | pH: 7.2 Preservative: 0.05% Sodium azide Constituents: PBS, 0.05% BSA |
| Purity | Protein A/G purified |
| Purification notes | Purified from Bioreactor concentrate |
| Clonality | Monoclonal |
| Clone number | TCL1/2079 |
| Isotype | IgG2a |
| Light chain type | kappa |

Applications

The Abpromise guarantee Our **Abpromise guarantee** covers the use of ab268137 in the following tested applications.

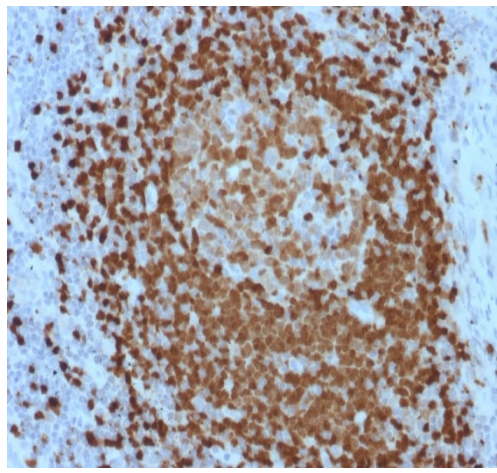
The application notes include recommended starting dilutions; optimal dilutions/concentrations should be determined by the end user.

| Application | Abreviews | Notes |
|---------------|-----------|--|
| WB | | Use a concentration of 1 - 2 µg/ml. Predicted molecular weight: 13 kDa. |
| IHC-P | | Use a concentration of 1 - 2 µg/ml. Perform heat mediated antigen retrieval with Tris/EDTA buffer pH 9.0 before commencing with IHC staining protocol. |
| Protein Array | | Use at an assay dependent concentration. |

Target

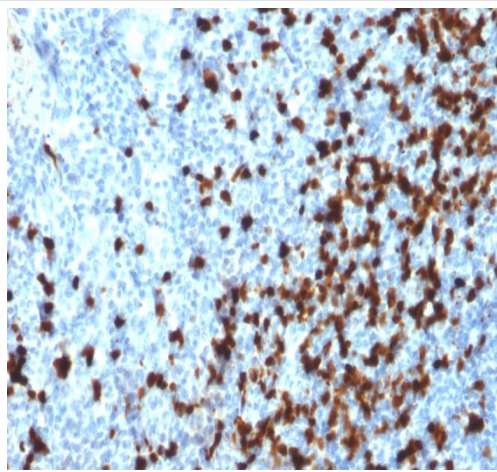
| | |
|-------------------------------|--|
| Function | Enhances the phosphorylation and activation of AKT1, AKT2 and AKT3. Promotes nuclear translocation of AKT1. Enhances cell proliferation, stabilizes mitochondrial membrane potential and promotes cell survival. |
| Tissue specificity | Restricted in the T-cell lineage to immature thymocytes and activated peripheral lymphocytes. Preferentially expressed early in T- and B-lymphocyte differentiation. |
| Involvement in disease | Note=Chromosomal aberrations activating TCL1A are found in chronic T-cell leukemias (T-CLL). Translocation t(14;14)(q11;q32); translocation t(7;14)(q35;q32); inversion inv(14)(q11;q32) that involves the T-cell receptor alpha/delta loci. |
| Sequence similarities | Belongs to the TCL1 family. |
| Cellular localization | Cytoplasm. Nucleus. Microsome. Endoplasmic reticulum. Microsomal fraction. |

Images



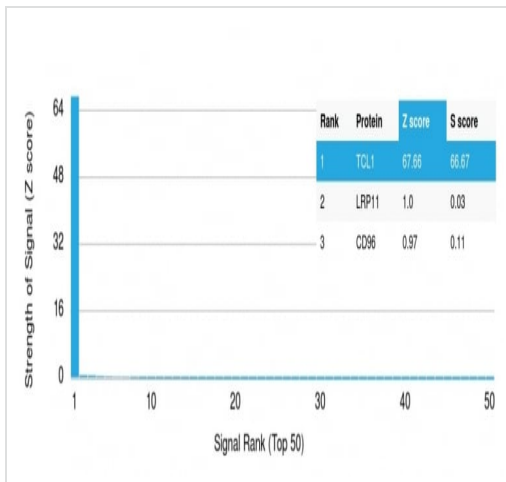
Formalin-fixed, paraffin-embedded human lymph node tissue stained for Tcl1 using ab268137 at 2 $\mu\text{g}/\text{ml}$ in immunohistochemical analysis.

Immunohistochemistry (Formalin/PFA-fixed paraffin-embedded sections) - Anti-Tcl1 antibody
[TCL1/2079] (ab268137)



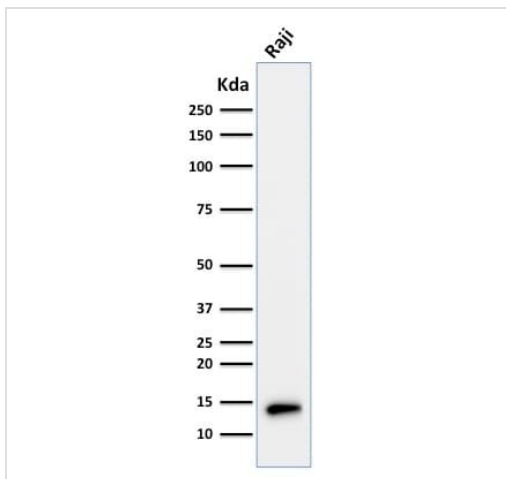
Formalin-fixed, paraffin-embedded human tonsil tissue stained for Tcl1 using ab268137 at 2 $\mu\text{g}/\text{ml}$ in immunohistochemical analysis.

Immunohistochemistry (Formalin/PFA-fixed paraffin-embedded sections) - Anti-Tcl1 antibody
[TCL1/2079] (ab268137)



Protein Array - Anti-Tcl1 antibody [TCL1/2079]
(ab268137)

Protein Array containing more than 19,000 full-length human proteins using ab268137. Z- and S- Score: The Z-score represents the strength of a signal that a monoclonal antibody (MAb) (in combination with a fluorescently-tagged anti-IgG secondary antibody) produces when binding to a particular protein on the HuProt™ array. Z-scores are described in units of standard deviations (SD's) above the mean value of all signals generated on that array. If targets on HuProt™ are arranged in descending order of the Z-score, the S-score is the difference (also in units of SD's) between the Z-score. S-score therefore represents the relative target specificity of a MAb to its intended target. A MAb is considered to specific to its intended target, if the MAb has an S-score of at least 2.5. For example, if a MAb binds to protein X with a Z-score of 43 and to protein Y with a Z-score of 14, then the S-score for the binding of that MAb to protein X is equal to 29.



Western blot - Anti-Tcl1 antibody [TCL1/2079]
(ab268137)

Anti-Tcl1 antibody [TCL1/2079] (ab268137) at 2 µg/ml + Raji
(Human Burkitt's lymphoma cell line) cell lysate

Predicted band size: 13 kDa

Please note: All products are "FOR RESEARCH USE ONLY. NOT FOR USE IN DIAGNOSTIC PROCEDURES"

Our Abpromise to you: Quality guaranteed and expert technical support

- Replacement or refund for products not performing as stated on the datasheet
- Valid for 12 months from date of delivery
- Response to your inquiry within 24 hours
- We provide support in Chinese, English, French, German, Japanese and Spanish
- Extensive multi-media technical resources to help you
- We investigate all quality concerns to ensure our products perform to the highest standards

If the product does not perform as described on this datasheet, we will offer a refund or replacement. For full details of the Abpromise, please visit <https://www.abcam.com/abpromise> or contact our technical team.

Terms and conditions

- Guarantee only valid for products bought direct from Abcam or one of our authorized distributors