


# Anti-TCP1 delta antibody ab264353

[1 References](#) [2 Images](#)

### Overview

<b>Product name</b>	Anti-TCP1 delta antibody
<b>Description</b>	Rabbit polyclonal to TCP1 delta
<b>Host species</b>	Rabbit
<b>Tested applications</b>	<b>Suitable for:</b> IP, WB
<b>Species reactivity</b>	<b>Reacts with:</b> Mouse, Human <b>Predicted to work with:</b> Orangutan 
<b>Immunogen</b>	Synthetic peptide within Human TCP1 delta aa 1-50. The exact sequence is proprietary. Database link: <a href="#">P50991</a>
<b>Positive control</b>	WB: HeLa, HEK-293T, Jurkat, TCMK and NIH/3T3 whole cell lysate. IP: HEK-293T whole cell lysate.
<b>General notes</b>	<p>The Life Science industry has been in the grips of a reproducibility crisis for a number of years. Abcam is leading the way in addressing this with our range of recombinant monoclonal antibodies and knockout edited cell lines for gold-standard validation. Please check that this product meets your needs before purchasing.</p> <p>If you have any questions, special requirements or concerns, please send us an inquiry and/or contact our Support team ahead of purchase. Recommended alternatives for this product can be found below, along with publications, customer reviews and Q&amp;As</p>

### Properties

<b>Form</b>	Liquid
<b>Storage instructions</b>	Shipped at 4°C. Store at +4°C short term (1-2 weeks). Upon delivery aliquot. Store at -20°C. Avoid freeze / thaw cycle.
<b>Storage buffer</b>	pH: 7 Preservative: 0.09% Sodium azide Constituent: Tris citrate/phosphate  pH 7 to 8
<b>Purity</b>	Immunogen affinity purified
<b>Clonality</b>	Polyclonal
<b>Isotype</b>	IgG

## Applications

### The Abpromise guarantee

Our **Abpromise guarantee** covers the use of ab264353 in the following tested applications.

The application notes include recommended starting dilutions; optimal dilutions/concentrations should be determined by the end user.

Application	Abreviews	Notes
IP		Use at 2-10 µg/mg of lysate.
WB		1/2000 - 1/10000.

## Target

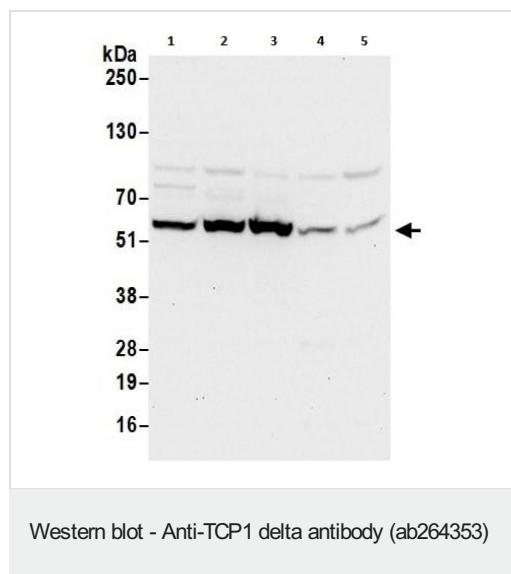
### Relevance

The chaperonin containing TCP1 complex (CCT), also called the TCP1 ring complex, consists of 2 back to back rings, each containing 8 unique but homologous subunits (e.g. CCT3). CCT assists the folding of newly translated polypeptide substrates through multiple rounds of ATP driven release and rebinding of partially folded intermediate forms. Substrates of CCT include the cytoskeletal proteins actin and tubulin, as well as alpha transducin. TCP1 delta belongs to the TCP1 chaperonin family, and is a molecular chaperone; assisting the folding of proteins upon ATP hydrolysis. It is known to play a role, in vitro, in the folding of actin and tubulin.

### Cellular localization

Cytoplasmic > Cytoskeleton

## Images



**All lanes :** Anti-TCP1 delta antibody (ab264353) at 0.1 µg/ml

**Lane 1 :** HeLa (Human epithelial cell line from cervix adenocarcinoma) whole cell lysate

**Lane 2 :** HEK-293T (Human epithelial cell line from embryonic kidney transformed with large T antigen) whole cell lysate

**Lane 3 :** Jurkat (Human T cell leukemia cell line from peripheral blood) whole cell lysate

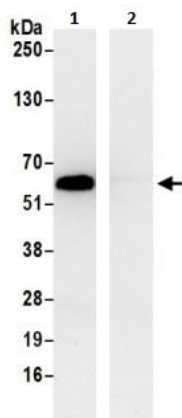
**Lane 4 :** TCMK (Mouse kidney epithelial cell line) whole cell lysate

**Lane 5 :** NIH/3T3 (Mouse embryo fibroblast cell line) whole cell lysate

Lysates/proteins at 50 µg per lane.

**Exposure time:** 10 seconds

Cells prepared using NETN lysis buffer.



Immunoprecipitation - Anti-TCP1 delta antibody  
(ab264353)

TCP1 delta was immunoprecipitated from 1mg of HEK-293T (Human epithelial cell line from embryonic kidney transformed with large T antigen) whole cell lysate with ab264353 at 6 µg per reaction. Western blot was performed from the immunoprecipitate using ab264353 at 0.1 µg/ml.

**Lane 1:** ab264353 IP in HEK-293T whole cell lysate.

**Lane 2:** Control IgG.

Exposure time: 10 secs.

Cells prepared using NETN lysis buffer.

**Please note:** All products are "FOR RESEARCH USE ONLY. NOT FOR USE IN DIAGNOSTIC PROCEDURES"

### Our Abpromise to you: Quality guaranteed and expert technical support

- Replacement or refund for products not performing as stated on the datasheet
- Valid for 12 months from date of delivery
- Response to your inquiry within 24 hours
- We provide support in Chinese, English, French, German, Japanese and Spanish
- Extensive multi-media technical resources to help you
- We investigate all quality concerns to ensure our products perform to the highest standards

If the product does not perform as described on this datasheet, we will offer a refund or replacement. For full details of the Abpromise, please visit <https://www.abcam.com/abpromise> or contact our technical team.

### Terms and conditions

- Guarantee only valid for products bought direct from Abcam or one of our authorized distributors