

## Product datasheet

# Anti-TCP1 delta antibody [EPR8494(B)] ab129112

Recombinant RabMAb

[1 References](#) [2 Images](#)

### Overview

<b>Product name</b>	Anti-TCP1 delta antibody [EPR8494(B)]
<b>Description</b>	Rabbit monoclonal [EPR8494(B)] to TCP1 delta
<b>Host species</b>	Rabbit
<b>Tested applications</b>	<b>Suitable for:</b> WB <b>Unsuitable for:</b> Flow Cyt, ICC/IF, IHC-P or IP
<b>Species reactivity</b>	<b>Reacts with:</b> Rat, Human
<b>Immunogen</b>	Synthetic peptide within Human TCP1 delta aa 1-100 (N terminal). The exact sequence is proprietary.
<b>Positive control</b>	C6, HeLa, HepG2, Jurkat, PC12 and Ramos cell lysates.
<b>General notes</b>	<p>This product is a recombinant monoclonal antibody, which offers several advantages including:</p> <ul style="list-style-type: none"> <li>- High batch-to-batch consistency and reproducibility</li> <li>- Improved sensitivity and specificity</li> <li>- Long-term security of supply</li> <li>- Animal-free production</li> </ul> <p>For more information <a href="#">see here</a>.</p> <p>Our RabMAb<sup>®</sup> technology is a patented hybridoma-based technology for making rabbit monoclonal antibodies. For details on our patents, please refer to <a href="#">RabMAb<sup>®</sup> patents</a>.</p> <p>Mouse: We have preliminary internal testing data to indicate this antibody may not react with this species. Please contact us for more information.</p>

### Properties

<b>Form</b>	Liquid
<b>Storage instructions</b>	Shipped at 4°C. Store at -20°C. Stable for 12 months at -20°C.
<b>Storage buffer</b>	pH: 7.20 Preservative: 0.01% Sodium azide Constituents: 9% PBS, 40% Glycerol (glycerin, glycerine), 0.05% BSA, 50% Tissue culture supernatant
<b>Purity</b>	Protein A purified

<b>Clonality</b>	Monoclonal
<b>Clone number</b>	EPR8494(B)
<b>Isotype</b>	IgG

## Applications

**The Abpromise guarantee** Our **Abpromise guarantee** covers the use of ab129112 in the following tested applications. The application notes include recommended starting dilutions; optimal dilutions/concentrations should be determined by the end user.

Application	Abreviews	Notes
WB		1/1000 - 1/10000. Detects a band of approximately 58 kDa (predicted molecular weight: 58 kDa).

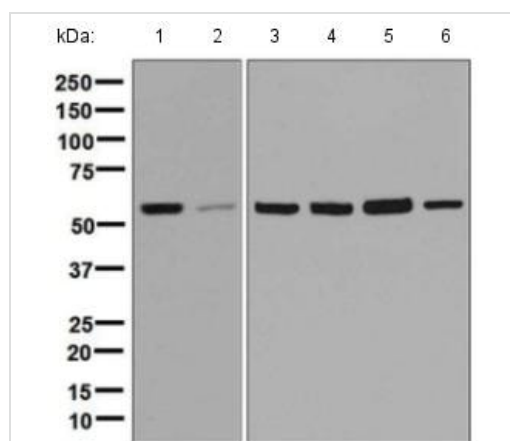
**Application notes** Is unsuitable for Flow Cyt, ICC/IF, IHC-P or IP.

## Target

**Relevance** The chaperonin containing TCP1 complex (CCT), also called the TCP1 ring complex, consists of 2 back to back rings, each containing 8 unique but homologous subunits (e.g. CCT3). CCT assists the folding of newly translated polypeptide substrates through multiple rounds of ATP driven release and rebinding of partially folded intermediate forms. Substrates of CCT include the cytoskeletal proteins actin and tubulin, as well as alpha transducin. TCP1 delta belongs to the TCP1 chaperonin family, and is a molecular chaperone; assisting the folding of proteins upon ATP hydrolysis. It is known to play a role, in vitro, in the folding of actin and tubulin.

**Cellular localization** Cytoplasmic > Cytoskeleton

## Images



Western blot - Anti-TCP1 delta antibody [EPR8494(B)] (ab129112)

**All lanes** : Anti-TCP1 delta antibody [EPR8494(B)] (ab129112) at 1/1000 dilution

- Lane 1** : C6 cell lysate
- Lane 2** : PC12 cell lysate
- Lane 3** : HeLa cell lysate
- Lane 4** : Ramos cell lysate
- Lane 5** : Jurkat cell lysate
- Lane 6** : HepG2 cell lysate





Lysates/proteins at 10 µg per lane.

### Secondary

**All lanes** : Standard HRP labelled goat anti-rabbit at 1/2000 dilution

**Predicted band size: 58 kDa**

Why choose a recombinant antibody?

 <p><b>Research with confidence</b> Consistent and reproducible results</p>	 <p><b>Long-term and scalable supply</b> Recombinant technology</p>
 <p><b>Success from the first experiment</b> Confirmed specificity</p>	 <p><b>Ethical standards compliant</b> Animal-free production</p>

Anti-TCP1 delta antibody [EPR8494(B)] (ab129112)

**Please note:** All products are "FOR RESEARCH USE ONLY. NOT FOR USE IN DIAGNOSTIC PROCEDURES"

### Our Abpromise to you: Quality guaranteed and expert technical support

---

- Replacement or refund for products not performing as stated on the datasheet
- Valid for 12 months from date of delivery
- Response to your inquiry within 24 hours
- We provide support in Chinese, English, French, German, Japanese and Spanish
- Extensive multi-media technical resources to help you
- We investigate all quality concerns to ensure our products perform to the highest standards

If the product does not perform as described on this datasheet, we will offer a refund or replacement. For full details of the Abpromise, please visit <https://www.abcam.com/abpromise> or contact our technical team.

### Terms and conditions

---

- Guarantee only valid for products bought direct from Abcam or one of our authorized distributors