




## Product datasheet

# Anti-TEA domain family member 2/ETF antibody ab92279

[4 References](#) [2 Images](#)

### Overview

<b>Product name</b>	Anti-TEA domain family member 2/ETF antibody
<b>Description</b>	Goat polyclonal to TEA domain family member 2/ETF
<b>Host species</b>	Goat
<b>Specificity</b>	Not expected to cross-react with other TEA domain family proteins.
<b>Tested applications</b>	<b>Suitable for:</b> WB
<b>Species reactivity</b>	<b>Reacts with:</b> Human <b>Predicted to work with:</b> Mouse, Rat, Dog 
<b>Immunogen</b>	Synthetic peptide corresponding to Human TEA domain family member 2/ETF aa 238-249 (internal sequence). Sequence: C-EPPDAVDSYQRH  Database link: <a href="#">NP_003589.1</a>  <a href="#">Run BLAST with</a>  <a href="#">Run BLAST with</a>
<b>Positive control</b>	Human ileum tissue lysate
<b>General notes</b>	<p>The Life Science industry has been in the grips of a reproducibility crisis for a number of years. Abcam is leading the way in addressing this with our range of recombinant monoclonal antibodies and knockout edited cell lines for gold-standard validation. Please check that this product meets your needs before purchasing.</p> <p>If you have any questions, special requirements or concerns, please send us an inquiry and/or contact our Support team ahead of purchase. Recommended alternatives for this product can be found below, along with publications, customer reviews and Q&amp;As</p>

### Properties

<b>Form</b>	Liquid
<b>Storage instructions</b>	Shipped at 4°C. Upon delivery aliquot and store at -20°C or -80°C. Avoid repeated freeze / thaw cycles.
<b>Storage buffer</b>	pH: 7.30

	Preservative: 0.02% Sodium azide Constituents: Tris buffered saline, 0.5% BSA
<b>Purity</b>	Immunogen affinity purified
<b>Purification notes</b>	Purified from Goat serum by ammonium sulphate precipitation followed by antigen affinity chromatography using the immunizing peptide.
<b>Clonality</b>	Polyclonal
<b>Isotype</b>	IgG

## Applications

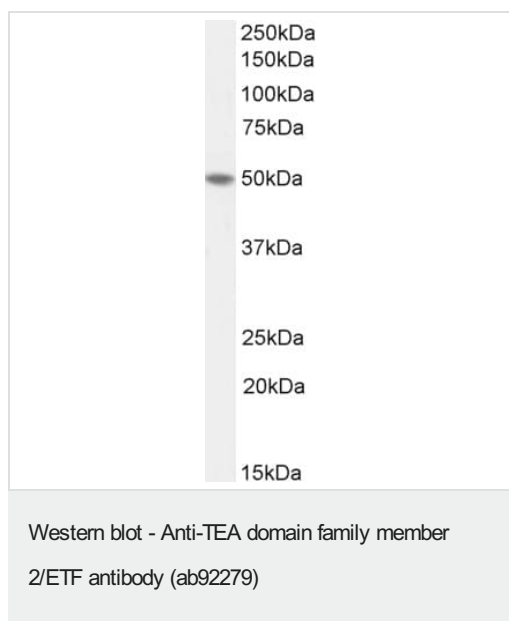
**The Abpromise guarantee** Our **Abpromise guarantee** covers the use of ab92279 in the following tested applications. The application notes include recommended starting dilutions; optimal dilutions/concentrations should be determined by the end user.

Application	Abreviews	Notes
<b>WB</b>		Use a concentration of 1 - 3 µg/ml. Detects a band of approximately 50 kDa (predicted molecular weight: 49 kDa). 1 hour primary incubation is recommended for this product.

## Target

<b>Function</b>	Transcription factor which plays a key role in the Hippo signaling pathway, a pathway involved in organ size control and tumor suppression by restricting proliferation and promoting apoptosis. The core of this pathway is composed of a kinase cascade wherein MST1/MST2, in complex with its regulatory protein SAV1, phosphorylates and activates LATS1/2 in complex with its regulatory protein MOB1, which in turn phosphorylates and inactivates YAP1 oncoprotein and WWTR1/TAZ. Acts by mediating gene expression of YAP1 and WWTR1/TAZ, thereby regulating cell proliferation, migration and epithelial mesenchymal transition (EMT) induction. Binds to the SPH and GT-IIIC 'enhancers' (5'-GTGGAATGT-3'). May be involved in the gene regulation of neural development. Binds to the M-CAT motif.
<b>Sequence similarities</b>	Contains 1 TEA DNA-binding domain.
<b>Cellular localization</b>	Nucleus.

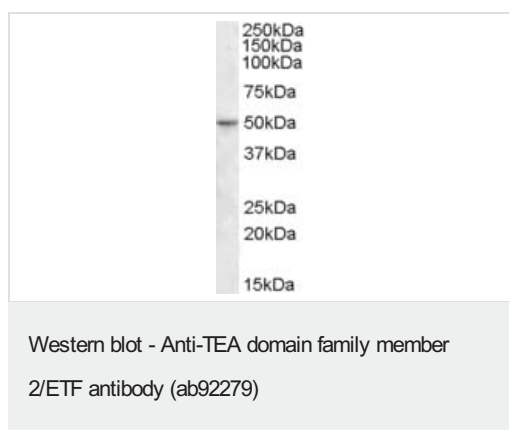
## Images



Anti-TEA domain family member 2/ETF antibody (ab92279) at 1 µg/ml + Human colon lysate (35µg protein in RIPA buffer)

**Predicted band size:** 49 kDa

Detected by chemiluminescence.



Anti-TEA domain family member 2/ETF antibody (ab92279) at 1 µg/ml + Human ileum lysate in RIPA buffer at 35 µg

Developed using the ECL technique.

**Predicted band size:** 49 kDa

**Observed band size:** 50 kDa

**Please note:** All products are "FOR RESEARCH USE ONLY. NOT FOR USE IN DIAGNOSTIC PROCEDURES"

### Our Abpromise to you: Quality guaranteed and expert technical support

- Replacement or refund for products not performing as stated on the datasheet
- Valid for 12 months from date of delivery
- Response to your inquiry within 24 hours
- We provide support in Chinese, English, French, German, Japanese and Spanish

- Extensive multi-media technical resources to help you
- We investigate all quality concerns to ensure our products perform to the highest standards

If the product does not perform as described on this datasheet, we will offer a refund or replacement. For full details of the Abpromise, please visit <https://www.abcam.com/abpromise> or contact our technical team.

#### **Terms and conditions**

---

- Guarantee only valid for products bought direct from Abcam or one of our authorized distributors