

Product datasheet

Anti-Telethonin antibody ab121868

[1 References](#) [3 Images](#)

Overview

Product name	Anti-Telethonin antibody
Description	Rabbit polyclonal to Telethonin
Host species	Rabbit
Tested applications	Suitable for: IHC-P, WB
Species reactivity	Reacts with: Human
Immunogen	antigen sequence: CEVSEENCER REAFWAEWKD LTLSTRPEEG CSLHEEDTQR HETYHQGGQC QVLVQRSPWL MMRMGILGRG LPEYQ, corresponding to internal sequence amino acids 8-82 of Human Telethonin. Run BLAST with Expasy Run BLAST with NCBI
Positive control	IHC: Human heart muscle and skeletal muscle tissue. WB: Skeletal muscle tissue lysate.
General notes	<p>The Life Science industry has been in the grips of a reproducibility crisis for a number of years. Abcam is leading the way in addressing this with our range of recombinant monoclonal antibodies and knockout edited cell lines for gold-standard validation. Please check that this product meets your needs before purchasing.</p> <p>If you have any questions, special requirements or concerns, please send us an inquiry and/or contact our Support team ahead of purchase. Recommended alternatives for this product can be found below, along with publications, customer reviews and Q&As</p>

Properties

Form	Liquid
Storage instructions	Shipped at 4°C. Upon delivery aliquot and store at -20°C. Avoid freeze / thaw cycles.
Storage buffer	pH: 7.20 Preservative: 0.02% Sodium azide Constituents: 59% PBS, 40% Glycerol (glycerin, glycerine)
Purity	Immunogen affinity purified
Clonality	Polyclonal
Isotype	IgG

Applications

The Abpromise guarantee

Our **Abpromise guarantee** covers the use of ab121868 in the following tested applications.

The application notes include recommended starting dilutions; optimal dilutions/concentrations should be determined by the end user.

Application	Abreviews	Notes
IHC-P		1/50 - 1/200. Perform heat mediated antigen retrieval with citrate buffer pH 6 before commencing with IHC staining protocol.
WB		Use a concentration of 0.04 - 0.4 µg/ml.

Target

Function

Muscle assembly regulating factor. Mediates the antiparallel assembly of titin (TTN) molecules at the sarcomeric Z-disk.

Tissue specificity

Heart and skeletal muscle.

Involvement in disease

Defects in TCAP are a cause of cardiomyopathy familial hypertrophic (CMH) [MIM:192600]; also designated FHC or HCM. Familial hypertrophic cardiomyopathy is a hereditary heart disorder characterized by ventricular hypertrophy, which is usually asymmetric and often involves the interventricular septum. The symptoms include dyspnea, syncope, collapse, palpitations, and chest pain. They can be readily provoked by exercise. The disorder has inter- and intrafamilial variability ranging from benign to malignant forms with high risk of cardiac failure and sudden cardiac death.

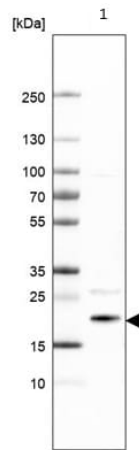
Defects in TCAP are a cause of limb-girdle muscular dystrophy type 2G (LGMD2G) [MIM:601954]. LGMD2G is an autosomal recessive degenerative myopathy characterized by proximal and distal muscle weakness and atrophy in the limbs, dystrophic changes on muscle biopsy, and absence of telethonin. Cardiac muscle is involved in a subset of patients.

Defects in TCAP are the cause of cardiomyopathy dilated type 1N (CMD1N) [MIM:607487]. Dilated cardiomyopathy is a disorder characterized by ventricular dilation and impaired systolic function, resulting in congestive heart failure and arrhythmia. Patients are at risk of premature death.

Cellular localization

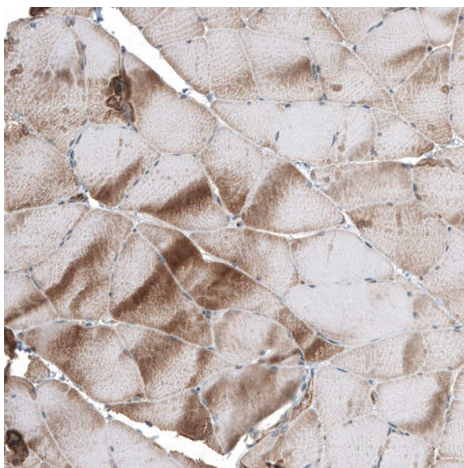
Cytoplasm > myofibril > sarcomere.

Images



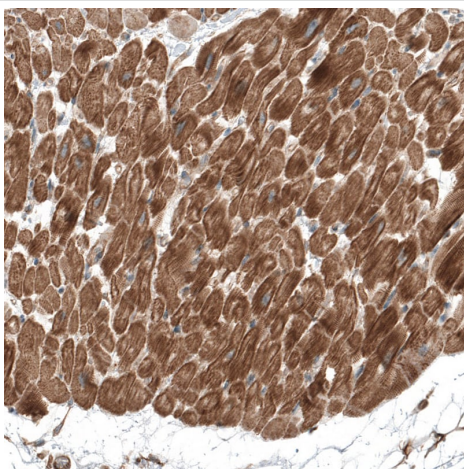
Western blot - Anti-Telethonin antibody (ab121868)

Anti-Telethonin antibody (ab121868) at 0.4 µg/ml + Human skeletal muscle tissue



Immunohistochemistry (Formalin/PFA-fixed paraffin-embedded sections) - Anti-Telethonin antibody (ab121868)

Paraffin-embedded human skeletal muscle tissue stained for Telethonin using ab121868 at 1/50 dilution in immunohistochemical analysis



Immunohistochemistry (Formalin/PFA-fixed paraffin-embedded sections) - Anti-Telethonin antibody (ab121868)

Paraffin-embedded human heart tissue stained for Telethonin using ab121868 at 1/50 dilution in immunohistochemical analysis

Please note: All products are "FOR RESEARCH USE ONLY. NOT FOR USE IN DIAGNOSTIC PROCEDURES"

Our Abpromise to you: Quality guaranteed and expert technical support

- Replacement or refund for products not performing as stated on the datasheet
- Valid for 12 months from date of delivery
- Response to your inquiry within 24 hours
- We provide support in Chinese, English, French, German, Japanese and Spanish
- Extensive multi-media technical resources to help you
- We investigate all quality concerns to ensure our products perform to the highest standards

If the product does not perform as described on this datasheet, we will offer a refund or replacement. For full details of the Abpromise, please visit <https://www.abcam.com/abpromise> or contact our technical team.

Terms and conditions

- Guarantee only valid for products bought direct from Abcam or one of our authorized distributors