

# Anti-TEM8/ATR antibody ab21269

[2 References](#) [3 Images](#)

## Overview

<b>Product name</b>	Anti-TEM8/ATR antibody
<b>Description</b>	Rabbit polyclonal to TEM8/ATR
<b>Host species</b>	Rabbit
<b>Specificity</b>	This antibody will recognize only the largest isoform of TEM8/ATR.
<b>Tested applications</b>	<b>Suitable for:</b> ICC/IF, WB
<b>Species reactivity</b>	<b>Reacts with:</b> Human
<b>Immunogen</b>	Synthetic peptide corresponding to Human TEM8/ATR (C terminal).
<b>Positive control</b>	WB: K562 cell lysates, Wild-type HeLa cell lysate, U-2 OS cell lysate
<b>General notes</b>	<p>The Life Science industry has been in the grips of a reproducibility crisis for a number of years. Abcam is leading the way in addressing this with our range of recombinant monoclonal antibodies and knockout edited cell lines for gold-standard validation. Please check that this product meets your needs before purchasing.</p> <p>If you have any questions, special requirements or concerns, please send us an inquiry and/or contact our Support team ahead of purchase. Recommended alternatives for this product can be found below, along with publications, customer reviews and Q&amp;As</p>

## Properties

<b>Form</b>	Liquid
<b>Storage instructions</b>	Shipped at 4°C. Store at +4°C.
<b>Storage buffer</b>	pH: 7.2 Preservative: 0.02% Sodium azide Constituent: PBS
<b>Purity</b>	Protein A purified
<b>Purification notes</b>	This antibody is ion exchange chromatography purified.
<b>Clonality</b>	Polyclonal
<b>Isotype</b>	IgG

## Applications

## The Abpromise guarantee

Our **Abpromise guarantee** covers the use of ab21269 in the following tested applications.

The application notes include recommended starting dilutions; optimal dilutions/concentrations should be determined by the end user.

Application	Abreviews	Notes
ICC/IF		Use a concentration of 2 µg/ml.
WB		Use a concentration of 1 - 2 µg/ml. Predicted molecular weight: 63 kDa.

## Target

### Function

Plays a role in cell attachment and migration. Interacts with extracellular matrix proteins and with the actin cytoskeleton. Mediates adhesion of cells to type 1 collagen and gelatin, reorganization of the actin cytoskeleton and promotes cell spreading. Plays a role in the angiogenic response of cultured umbilical vein endothelial cells.

### Tissue specificity

Detected in umbilical vein endothelial cells (at protein level). Highly expressed in tumor endothelial cells.

### Involvement in disease

Defects in ANTXR1 are associated with susceptibility to hemangioma capillary infantile (HCI) [MIM:602089]. HCI are benign, highly proliferative lesions involving aberrant localized growth of capillary endothelium. They are the most common tumor of infancy, occurring in up to 10% of all births. Hemangiomas tend to appear shortly after birth and show rapid neonatal growth for up to 12 months characterized by endothelial hypercellularity and increased numbers of mast cells. This phase is followed by slow involution at a rate of about 10% per year and replacement by fibrofatty stroma.

### Sequence similarities

Belongs to the ATR family.  
Contains 1 VWFA domain.

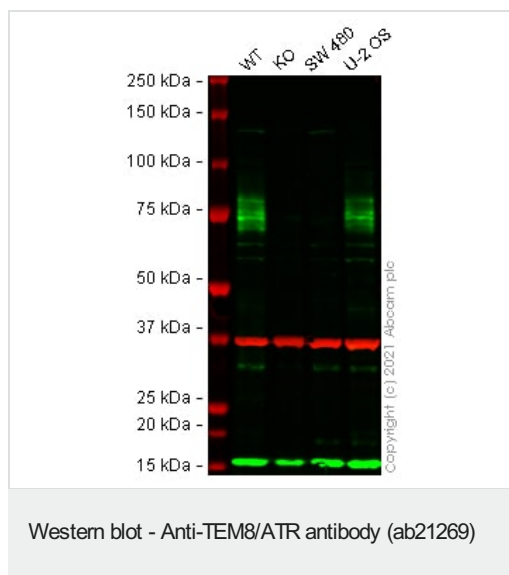
### Domain

Binding to PA occurs through the VWA domain.

### Cellular localization

Cell membrane. Cell projection > lamellipodium membrane. Cell projection > filopodium membrane. At the membrane of lamellipodia and at the tip of actin-enriched filopodia.  
Colocalizes with actin at the base of lamellipodia.

## Images



**All lanes :** Anti-TEM8/ATR antibody (ab21269) at 1 µg/ml

**Lane 1 :** Wild-type HeLa cell lysate

**Lane 2 :** ANTXR1 knockout HeLa cell lysate

**Lane 3 :** SW480 cell lysate

**Lane 4 :** U-2 OS cell lysate

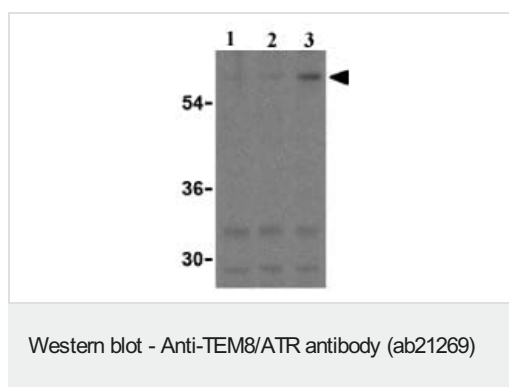
Lysates/proteins at 20 µg per lane.

Performed under reducing conditions.

**Predicted band size:** 63 kDa

**Observed band size:** 100 kDa

False colour image of Western blot: Anti-TEM8/ATR antibody staining at 1 µg/ml, shown in green; Mouse anti-GAPDH antibody [6C5] ([ab8245](#)) loading control staining at 1/20000 dilution, shown in red. In Western blot, ab21269 was shown to bind specifically to TEM8/ATR. A band was observed at 100 kDa in wild-type HeLa cell lysates with no signal observed at this size in ANTXR1 knockout cell line [ab265077](#) (knockout cell lysate [ab257350](#)). To generate this image, wild-type and ANTXR1 knockout HeLa cell lysates were analysed. First, samples were run on an SDS-PAGE gel then transferred onto a nitrocellulose membrane. Membranes were blocked in 3 % milk in TBS-0.1 % Tween® 20 (TBS-T) before incubation with primary antibodies overnight at 4 °C. Blots were washed four times in TBS-T, incubated with secondary antibodies for 1 h at room temperature, washed again four times then imaged. Secondary antibodies used were Goat anti-Rabbit IgG H&L (IRDye® 800CW) preabsorbed ([ab216773](#)) and Goat anti-Mouse IgG H&L (IRDye® 680RD) preabsorbed ([ab216776](#)) at 1/20000 dilution.



**Lane 1 :** Anti-TEM8/ATR antibody (ab21269) at 0.5 µg/ml

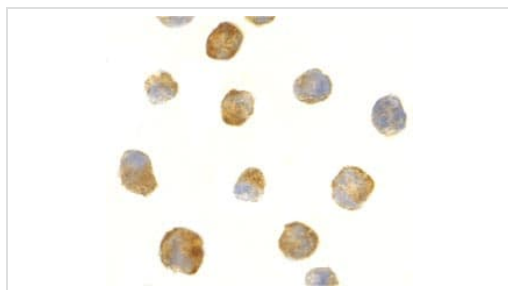
**Lane 2 :** Anti-TEM8/ATR antibody (ab21269) at 1 µg/ml

**Lane 3 :** Anti-TEM8/ATR antibody (ab21269) at 2 µg/ml

**All lanes :** K562 cell lysate

**Predicted band size:** 63 kDa

Western blot analysis of TEM8/ATR in K562 cell lysates with ab21269 at (A) 0.5, (B) 1 and (C) 2µg/ml.



Immunocytochemistry/ Immunofluorescence - Anti-TEM8/ATR antibody (ab21269)

ab21269 at 2µg/ml staining TEM8/ATR in K562 cells by ICC/IF

**Please note:** All products are "FOR RESEARCH USE ONLY. NOT FOR USE IN DIAGNOSTIC PROCEDURES"

#### Our Abpromise to you: Quality guaranteed and expert technical support

---

- Replacement or refund for products not performing as stated on the datasheet
- Valid for 12 months from date of delivery
- Response to your inquiry within 24 hours
- We provide support in Chinese, English, French, German, Japanese and Spanish
- Extensive multi-media technical resources to help you
- We investigate all quality concerns to ensure our products perform to the highest standards

If the product does not perform as described on this datasheet, we will offer a refund or replacement. For full details of the Abpromise, please visit <https://www.abcam.com/abpromise> or contact our technical team.

#### Terms and conditions

---

- Guarantee only valid for products bought direct from Abcam or one of our authorized distributors