


Product datasheet

Anti-TESK2 antibody ab230644

[2 Images](#)

Overview

Product name	Anti-TESK2 antibody
Description	Rabbit polyclonal to TESK2
Host species	Rabbit
Tested applications	Suitable for: IHC-P, WB
Species reactivity	Reacts with: Mouse, Human Predicted to work with: Rat, Zebrafish 
Immunogen	Synthetic peptide corresponding to Human TESK2 (internal sequence) conjugated to keyhole limpet haemocyanin. Database link: Q96S53
General notes	<p>The Life Science industry has been in the grips of a reproducibility crisis for a number of years. Abcam is leading the way in addressing this with our range of recombinant monoclonal antibodies and knockout edited cell lines for gold-standard validation. Please check that this product meets your needs before purchasing.</p> <p>If you have any questions, special requirements or concerns, please send us an inquiry and/or contact our Support team ahead of purchase. Recommended alternatives for this product can be found below, along with publications, customer reviews and Q&As</p>

Properties

Form	Liquid
Storage instructions	Shipped at 4°C. Store at +4°C short term (1-2 weeks). Upon delivery aliquot. Store at -20°C long term. Avoid freeze / thaw cycle.
Storage buffer	pH: 7.30 Preservative: 0.01% Sodium azide Constituents: PBS, 30% Glycerol (glycerin, glycerine)
Purity	Immunogen affinity purified
Clonality	Polyclonal
Isotype	IgG

Applications

The Abpromise guarantee

Our **Abpromise guarantee** covers the use of ab230644 in the following tested applications.

The application notes include recommended starting dilutions; optimal dilutions/concentrations should be determined by the end user.

Application	Abreviews	Notes
IHC-P		1/100.
WB		1/500 - 1/1000. Predicted molecular weight: 64 kDa.

Target

Function

Dual specificity protein kinase activity catalyzing autophosphorylation and phosphorylation of exogenous substrates on both serine/threonine and tyrosine residues. Phosphorylates cofilin at 'Ser-3'. May play an important role in spermatogenesis.

Tissue specificity

Predominantly expressed in testis and prostate. Found predominantly in non-germinal Sertoli cells.

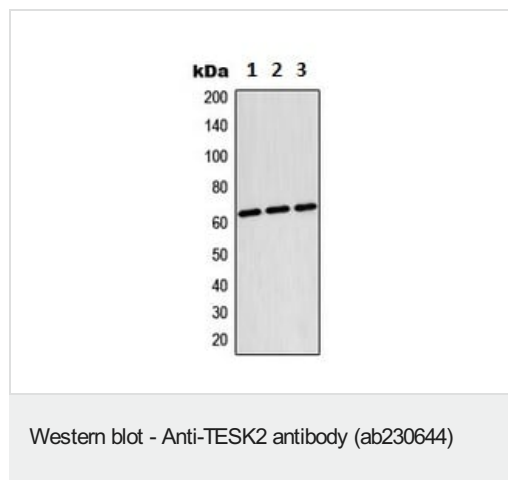
Sequence similarities

Belongs to the protein kinase superfamily. TKL Ser/Thr protein kinase family. Contains 1 protein kinase domain.

Cellular localization

Nucleus.

Images



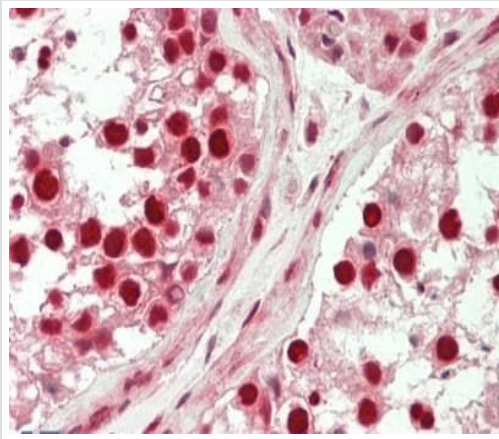
All lanes : Anti-TESK2 antibody (ab230644) at 1/500 dilution

Lane 1 : Raji (human Burkitt's lymphoma cell line) whole cell lysate

Lane 2 : HepG2 (human liver hepatocellular carcinoma cell line) whole cell lysate

Lane 3 : NIH/3T3 (mouse embryo fibroblast cell line) whole cell lysate

Predicted band size: 64 kDa



Formalin-fixed, paraffin-embedded human testis tissue stained for TESK2 using ab230644 at 1/100 dilution in immunohistochemical analysis.

Immunohistochemistry (Formalin/PFA-fixed paraffin-embedded sections) - Anti-TESK2 antibody (ab230644)

Please note: All products are "FOR RESEARCH USE ONLY. NOT FOR USE IN DIAGNOSTIC PROCEDURES"

Our Abpromise to you: Quality guaranteed and expert technical support

- Replacement or refund for products not performing as stated on the datasheet
- Valid for 12 months from date of delivery
- Response to your inquiry within 24 hours
- We provide support in Chinese, English, French, German, Japanese and Spanish
- Extensive multi-media technical resources to help you
- We investigate all quality concerns to ensure our products perform to the highest standards

If the product does not perform as described on this datasheet, we will offer a refund or replacement. For full details of the Abpromise, please visit <https://www.abcam.com/abpromise> or contact our technical team.

Terms and conditions

- Guarantee only valid for products bought direct from Abcam or one of our authorized distributors