

## Product datasheet

### Anti-TeX14 antibody ab41733

★★★★★ [4 Abreviews](#) [4 References](#) [1 Image](#)

#### Overview

<b>Product name</b>	Anti-TeX14 antibody
<b>Description</b>	Rabbit polyclonal to Tex14
<b>Host species</b>	Rabbit
<b>Tested applications</b>	<b>Suitable for:</b> IHC - Wholemount
<b>Species reactivity</b>	<b>Reacts with:</b> Mouse
<b>Immunogen</b>	Synthetic peptide conjugated to KLH derived from within residues 950 - 1050 of Mouse Tex14. Read Abcam's proprietary immunogen policy (Peptide available as <a href="#">ab42412</a> .)
<b>General notes</b>	<p>The Life Science industry has been in the grips of a reproducibility crisis for a number of years. Abcam is leading the way in addressing this with our range of recombinant monoclonal antibodies and knockout edited cell lines for gold-standard validation. Please check that this product meets your needs before purchasing.</p> <p>If you have any questions, special requirements or concerns, please send us an inquiry and/or contact our Support team ahead of purchase. Recommended alternatives for this product can be found below, along with publications, customer reviews and Q&amp;As</p>

#### Properties

<b>Form</b>	Liquid
<b>Storage instructions</b>	Shipped at 4°C. Store at +4°C short term (1-2 weeks). Upon delivery aliquot. Store at -20°C or -80°C. Avoid freeze / thaw cycle.
<b>Storage buffer</b>	<p>pH: 7.40</p> <p>Preservative: 0.02% Sodium azide</p> <p>Constituent: PBS</p> <p>Batches of this product that have a concentration &lt; 1mg/ml may have BSA added as a stabilising agent. If you would like information about the formulation of a specific lot, please contact our scientific support team who will be happy to help.</p>
<b>Purity</b>	Immunogen affinity purified
<b>Clonality</b>	Polyclonal
<b>Isotype</b>	IgG

## Applications

### The Abpromise guarantee

Our **Abpromise guarantee** covers the use of ab41733 in the following tested applications.

The application notes include recommended starting dilutions; optimal dilutions/concentrations should be determined by the end user.

Application	Abreviews	Notes
IHC - Wholemout	★★★★★ (2)	Use at an assay dependent concentration.

## Target

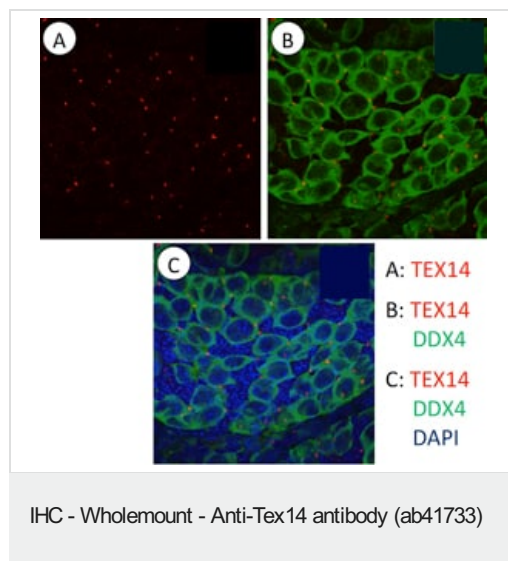
### Relevance

Testis-expressed gene 14 (TEX14) is a novel protein that localizes to germ cell intercellular bridges. In the absence of TEX14, intercellular bridges are not observed. Spermatogenesis in Tex14<sup>-/-</sup> mice progresses through the transit amplification of diploid spermatogonia and the expression of early meiotic markers but halts before the completion of the first meiotic division.

### Cellular localization

Cytoplasmic

## Images



This antibody appears to stain intercellular bridges between germ cells, as it should. TEX14 staining is present within the testis cords between DDX4 positive cells (germ cells), but is absent between DDX4 negative cells (Sertoli cells).

Postnatal day 6 mouse testes were fixed with 4% paraformaldehyde for 5 hours at 4°C, then washed overnight in PBS at 4°C. Testes were detunicated and cut in half, then permeabilized with 0.1% Triton X-100 in PBS for 30 min at 20°C, then blocked with 3% BSA with 0.1% Triton X-100 in PBS for 1 hour at 20°C. Sections were incubated with Rabbit Anti-TEX14 (Abcam ab41733) diluted 1/3000 plus Goat Anti-DDX4 diluted 1/800 for 14 hours at 4°C. Tissue was then washed 3X for 30 min each with 0.1% Triton X-100 in PBS. Tissue was then incubated with Donkey Anti-Rabbit 555 (Abcam **ab150062**) plus Donkey Anti-Goat 647 (Abcam **ab150155**) diluted 1/500 for 3 hours at 20°C. with Abcam DAPI after washing 3X with 0.1% Triton X-100 in PBS. Tissue was then incubated with Fluoroshield Mounting Medium With DAPI (Abcam **ab104139**) with mounted onto a slide and coverslipped. Tissue was imaged on an Olympus FV 1000 confocal microscope and represented as a maximum intensity Z-projection of a 5 µm thick Z-stack.

**Please note:** All products are "FOR RESEARCH USE ONLY. NOT FOR USE IN DIAGNOSTIC PROCEDURES"

### **Our Abpromise to you: Quality guaranteed and expert technical support**

---

- Replacement or refund for products not performing as stated on the datasheet
- Valid for 12 months from date of delivery
- Response to your inquiry within 24 hours
  
- We provide support in Chinese, English, French, German, Japanese and Spanish
- Extensive multi-media technical resources to help you
- We investigate all quality concerns to ensure our products perform to the highest standards

If the product does not perform as described on this datasheet, we will offer a refund or replacement. For full details of the Abpromise, please visit <https://www.abcam.com/abpromise> or contact our technical team.

### **Terms and conditions**

---

- Guarantee only valid for products bought direct from Abcam or one of our authorized distributors