

Product datasheet

Anti-TFEB antibody ab245349

[2 Images](#)

Overview

| | |
|----------------------------|---|
| Product name | Anti-TFEB antibody |
| Description | Rabbit polyclonal to TFEB |
| Host species | Rabbit |
| Tested applications | Suitable for: IP, WB |
| Species reactivity | Reacts with: Human |
| Immunogen | Synthetic peptide within Human TFEB aa 325-375. The exact sequence is proprietary. NP_009093.1 Database link: P19484 |
| Positive control | WB: HeLa and HEK-293T whole cell lysate. IP: HeLa whole cell lysate. |
| General notes | <p>The Life Science industry has been in the grips of a reproducibility crisis for a number of years. Abcam is leading the way in addressing this with our range of recombinant monoclonal antibodies and knockout edited cell lines for gold-standard validation. Please check that this product meets your needs before purchasing.</p> <p>If you have any questions, special requirements or concerns, please send us an inquiry and/or contact our Support team ahead of purchase. Recommended alternatives for this product can be found below, along with publications, customer reviews and Q&As</p> |

Properties

| | |
|-----------------------------|---|
| Form | Liquid |
| Storage instructions | Shipped at 4°C. Store at +4°C short term (1-2 weeks). Upon delivery aliquot. Store at -20°C long term. Avoid freeze / thaw cycle. |
| Storage buffer | pH: 7 Preservative: 0.09% Sodium azide Constituent: Tris citrate/phosphate |
| Purity | pH 7 to 8 Immunogen affinity purified |
| Purification notes | ab245349 was affinity purified using an epitope specific to TFEB immobilized on solid support. |
| Clonality | Polyclonal |
| Isotype | IgG |

Applications

The Abpromise guarantee Our **Abpromise guarantee** covers the use of ab245349 in the following tested applications.

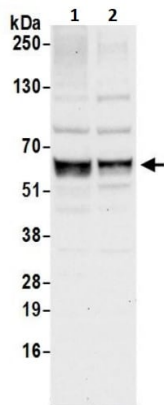
The application notes include recommended starting dilutions; optimal dilutions/concentrations should be determined by the end user.

| Application | Abreviews | Notes |
|-------------|-----------|---|
| IP | | Use at 2-10 µg/mg of lysate. |
| WB | | 1/2000 - 1/10000. Predicted molecular weight: 53 kDa. |

Target

| | |
|---|--|
| Function | Transcription factor that specifically recognizes and binds E-box sequences (3'-CANNTG-5'). Efficient DNA-binding requires dimerization with itself or with another MiT/TFE family member such as TFE3 or MITF. In association with TFE3, activates the expression of CD40L in T-cells, thereby playing a role in T-cell-dependent antibody responses in activated CD4(+) T-cells and thymus-dependent humoral immunity. Specifically recognizes and binds the CLEAR-box sequence (5'-GTCACGTGAC-3') present in the regulatory region of many lysosomal genes, leading to activate their expression. It thereby plays a central role in expression of lysosomal genes. Specifically recognizes the gamma-E3 box, a subset of E-boxes, present in the heavy-chain immunoglobulin enhancer. Plays a role in the signal transduction processes required for normal vascularization of the placenta. |
| Sequence similarities | Belongs to the MiT/TFE family. Contains 1 basic helix-loop-helix (bHLH) domain. |
| Domain | The leucin zipper region is essential for homo- or heterodimerization and high-affinity DNA binding. DNA binding is mediated by the basic region. |
| Post-translational modifications | Sumoylated; does not affect dimerization with MITF. |
| Cellular localization | Cytoplasm. Nucleus. Mainly present in the cytoplasm. Under aberrant lysosomal storage conditions, it translocates from the cytoplasm to the nucleus. |

Images



Western blot - Anti-TFEB antibody (ab245349)

All lanes : Anti-TFEB antibody (ab245349) at 0.1 µg/ml

Lane 1 : HeLa (Human epithelial cell line from cervix adenocarcinoma) whole cell lysate

Lane 2 : HEK-293T (Human epithelial cell line from embryonic kidney transformed with large T antigen) whole cell lysate

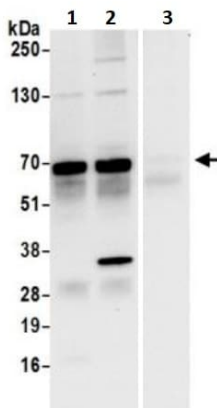
Lysates/proteins at 50 µg per lane.

Developed using the ECL technique.

Predicted band size: 53 kDa

Exposure time: 10 seconds

Prepared using NETN lysis buffer.



Immunoprecipitation - Anti-TFEB antibody (ab245349)

TFEB was immunoprecipitated from HeLa (Human epithelial cell line from cervix adenocarcinoma) whole cell lysate (1 mg per IP reaction; 20% of IP loaded) prepared using NETN lysis buffer. ab245349 used for IP at 6 µg per reaction. For WB 1 µg/ml.

Lane 1: ab245349 (Lot 2) IP in HeLa whole cell lysate.

Lane 2: ab245349 (Lot 3) IP in HeLa whole cell lysate.

Lane 3: Control IgG.

Chemiluminescence detection: 10 seconds.

Please note: All products are "FOR RESEARCH USE ONLY. NOT FOR USE IN DIAGNOSTIC PROCEDURES"

Our Abpromise to you: Quality guaranteed and expert technical support

- Replacement or refund for products not performing as stated on the datasheet
- Valid for 12 months from date of delivery
- Response to your inquiry within 24 hours

- We provide support in Chinese, English, French, German, Japanese and Spanish
- Extensive multi-media technical resources to help you
- We investigate all quality concerns to ensure our products perform to the highest standards

If the product does not perform as described on this datasheet, we will offer a refund or replacement. For full details of the Abpromise, please visit <https://www.abcam.com/abpromise> or contact our technical team.

Terms and conditions

- Guarantee only valid for products bought direct from Abcam or one of our authorized distributors