

## Product datasheet

# Anti-TGF alpha antibody [EPR15346] ab208156

Recombinant RabMAb

[5 References](#) [10 Images](#)

### Overview

<b>Product name</b>	Anti-TGF alpha antibody [EPR15346]
<b>Description</b>	Rabbit monoclonal [EPR15346] to TGF alpha
<b>Host species</b>	Rabbit
<b>Tested applications</b>	<b>Suitable for:</b> WB, IHC-P, ICC/IF, IP
<b>Species reactivity</b>	<b>Reacts with:</b> Human
<b>Immunogen</b>	Recombinant full length protein. This information is proprietary to Abcam and/or its suppliers.
<b>Positive control</b>	WB: Human fetal skin, fetal liver and breast cancer lysates; HepG2 and Ramos whole cell lysates. IHC-P: Human liver and hepatocellular carcinoma tissues. ICC/IF: HepG2 cells. IP: HepG2 and Ramos whole cell lysates.
<b>General notes</b>	<p>This product is a recombinant monoclonal antibody, which offers several advantages including:</p> <ul style="list-style-type: none"><li>- High batch-to-batch consistency and reproducibility</li><li>- Improved sensitivity and specificity</li><li>- Long-term security of supply</li><li>- Animal-free production</li></ul> <p>For more information <a href="#">see here</a>.</p> <p>Our RabMAb<sup>®</sup> technology is a patented hybridoma-based technology for making rabbit monoclonal antibodies. For details on our patents, please refer to <a href="#">RabMAb<sup>®</sup> patents</a>.</p>

### Properties

<b>Form</b>	Liquid
<b>Storage instructions</b>	Shipped at 4°C. Store at +4°C short term (1-2 weeks). Upon delivery aliquot. Store at -20°C long term. Avoid freeze / thaw cycle.
<b>Storage buffer</b>	pH: 7.2 Preservative: 0.01% Sodium azide Constituents: 59% PBS, 40% Glycerol (glycerin, glycerine), 0.05% BSA
<b>Purity</b>	Protein A purified
<b>Clonality</b>	Monoclonal
<b>Clone number</b>	EPR15346

Isotype

IgG

## Applications

### The Abpromise guarantee

Our **Abpromise guarantee** covers the use of ab208156 in the following tested applications.

The application notes include recommended starting dilutions; optimal dilutions/concentrations should be determined by the end user.

Application	Abreviews	Notes
WB		1/1000. Detects a band of approximately 15 kDa (predicted molecular weight: 17 kDa).
IHC-P		1/4000. Perform heat mediated antigen retrieval with Tris/EDTA buffer pH 9.0 before commencing with IHC staining protocol.
ICC/IF		1/100.
IP		1/40.

## Target

### Function

TGF alpha is a mitogenic polypeptide that is able to bind to the EGF receptor and to act synergistically with TGF beta to promote anchorage-independent cell proliferation in soft agar.

### Tissue specificity

Isoform 1, isoform 3 and isoform 4 are expressed in keratinocytes and tumor-derived cell lines.

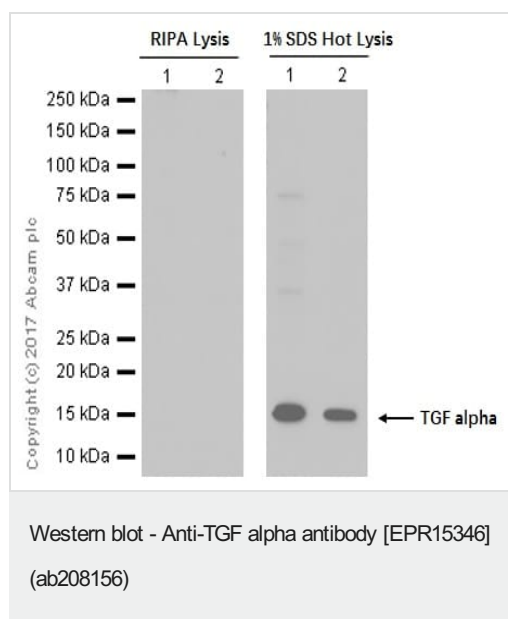
### Sequence similarities

Contains 1 EGF-like domain.

### Cellular localization

Cell membrane and Secreted > extracellular space.

## Images



**Lane 1** : Anti-TGF alpha antibody [EPR15346] (ab208156) at 1/1000 dilution

**Lane 2** : Anti-TGF alpha antibody [EPR15346] (ab208156) at 1/5000 dilution

**All lanes** : MCF-7 whole cell lysate

Lysates/proteins at 15 µg per lane.

### Secondary

**All lanes** : Peroxidase-conjugated goat anti-rabbit IgG (H+L) at 1/20000 dilution

**Predicted band size:** 17 kDa

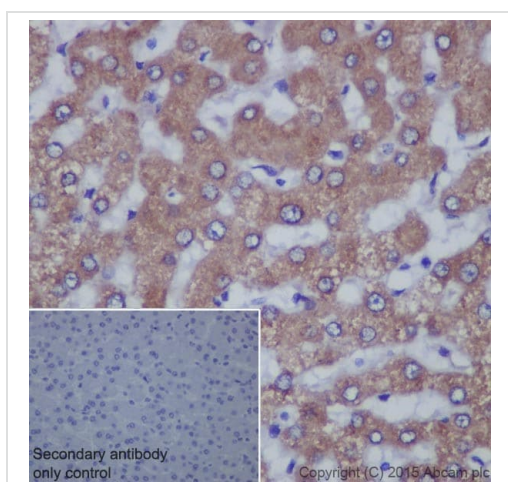
**Observed band size:** 15 kDa

**Exposure time:** 3 minutes

The different result is due to the lysates preparation method. The lysate in the left image is prepared by RIPA lysis method. The lysate in the right image is prepared by 1% SDS Hot lysis method. This antibody works better in 1% SDS Hot Lysates in WB.

For Lysate preparation protocol, please refer to the protocol book in the protocol section and/or [here](#).

Blocking and dilution buffer: 5% NFDN/TBST.

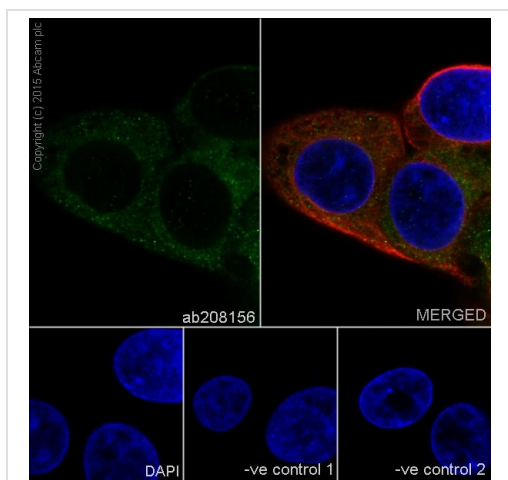


Immunohistochemical analysis of paraffin-embedded Human liver tissue labeling TGF alpha with ab208156 at 1/4000 dilution, followed by Goat Anti-Rabbit IgG H&L (HRP) ([ab97051](#)) at 1/500 dilution. Cytoplasmic staining on Human liver is observed. Counter stained with Hematoxylin.

Secondary antibody only control: Used PBS instead of primary antibody, secondary antibody is Goat Anti-Rabbit IgG H&L (HRP) ([ab97051](#)) at 1/500 dilution.

Perform heat mediated antigen retrieval with Tris/EDTA buffer pH 9.0 before commencing with IHC staining protocol.

Immunohistochemistry (Formalin/PFA-fixed paraffin-embedded sections) - Anti-TGF alpha antibody [EPR15346] (ab208156)



Immunocytochemistry/ Immunofluorescence - Anti-TGF alpha antibody [EPR15346] (ab208156)

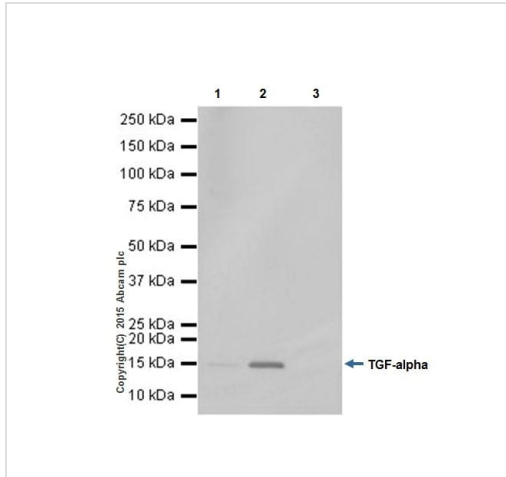
Immunofluorescent analysis of 4% paraformaldehyde-fixed, 0.1% Triton X-100 permeabilized HepG2 (Human liver hepatocellular carcinoma cell line) cells labeling TGF alpha with ab208156 at 1/100 dilution, followed by Goat Anti-Rabbit IgG (Alexa Fluor® 488) ([ab150077](#)) secondary antibody at 1/1000 dilution (green). Confocal image showing cytoplasmic staining on HepG2 cell line. The nuclear counter stain is DAPI (blue). Tubulin is detected with Anti-alpha Tubulin antibody -Loading Control ([ab7291](#)) at 1/1000 dilution and Goat Anti-Mouse IgG (AlexaFluor®594) preadsorbed ([ab150120](#)) at 1/1000 dilution (red).

The negative controls are as follows:

-ve control 1: ab208156 at 1/100 dilution followed by [ab150120](#) at 1/1000 dilution.

-ve control 2: [ab7291](#) at 1/1000 dilution followed by [ab150077](#) at

1/1000 dilution.



Immunoprecipitation - Anti-TGF alpha antibody [EPR15346] (ab208156)

TGF alpha was immunoprecipitated from 1mg of HepG2 (Human liver hepatocellular carcinoma cell line) whole cell lysate with ab208156 at 1/40 dilution. Western blot was performed from the immunoprecipitate using ab208156 at 1/1000 dilution. VeriBlot for IP Detection Reagent (HRP) ([ab131366](#)), was used for detection at 1/10000 dilution.

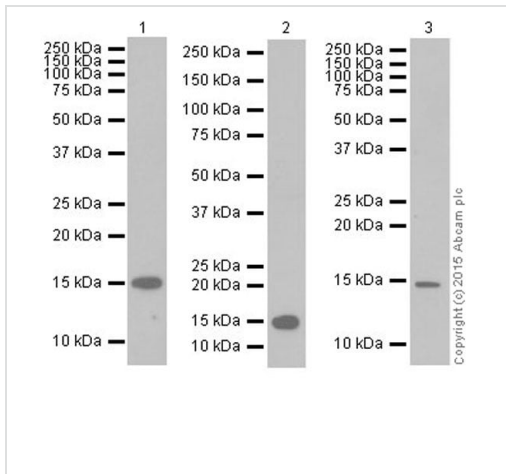
Lane 1: HepG2 whole cell lysate 10µg (Input).

Lane 2: ab208156 IP in HepG2 whole cell lysate.

Lane 3: Rabbit IgG, monoclonal - Isotype Control ([ab172730](#)) instead of ab208156 in HepG2 whole cell lysate.

Blocking and dilution buffer and concentration: 5% NFDM/TBST.

Exposure time: 1 second.



Western blot - Anti-TGF alpha antibody [EPR15346] (ab208156)

**All lanes** : Anti-TGF alpha antibody [EPR15346] (ab208156) at 1/1000 dilution

**Lane 1** : Human fetal skin lysate

**Lane 2** : Human fetal liver lysate

**Lane 3** : Human breast cancer lysate

Lysates/proteins at 10 µg per lane.

### Secondary

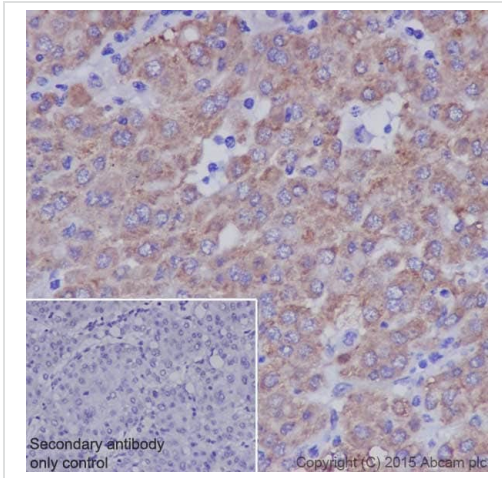
**All lanes** : Goat Anti-Rabbit IgG Peroxidase Conjugate, specific to the non-reduced form of IgG at 1/10000 dilution

**Predicted band size:** 17 kDa

**Observed band size:** 15 kDa

Blocking/Dilution buffer: 5% NFDM/TBST.

Exposure time: Lane 1 and 3: 3 minutes; Lane 2: 1 minute.

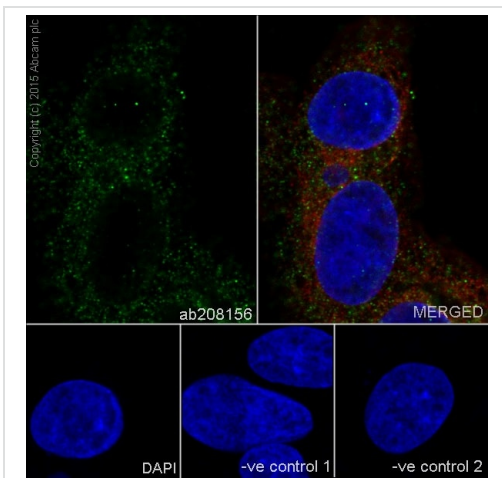


Immunohistochemistry (Formalin/PFA-fixed paraffin-embedded sections) - Anti-TGF alpha antibody [EPR15346] (ab208156)

Immunohistochemical analysis of paraffin-embedded Human hepatocellular carcinoma tissue labeling TGF alpha with ab208156 at 1/4000 dilution, followed by Goat Anti-Rabbit IgG H&L (HRP) (**ab97051**) at 1/500 dilution. Cytoplasm staining on the cancer cells of Human hepatocellular carcinoma is observed. Counter stained with Hematoxylin.

Secondary antibody only control: Used PBS instead of primary antibody, secondary antibody is Goat Anti-Rabbit IgG H&L (HRP) (**ab97051**) at 1/500 dilution.

Perform heat mediated antigen retrieval with Tris/EDTA buffer pH 9.0 before commencing with IHC staining protocol.



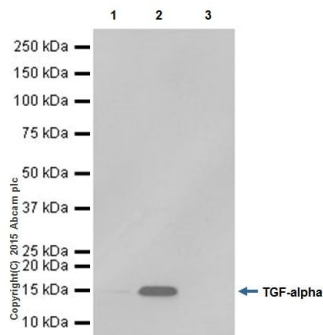
Immunocytochemistry/ Immunofluorescence - Anti-TGF alpha antibody [EPR15346] (ab208156)

Immunofluorescent analysis of 4% paraformaldehyde-fixed, 0.1% Triton X-100 permeabilized HepG2 (Human liver hepatocellular carcinoma cell line) cells, treated with Brefeldin A (10  $\mu$ M, 18 hours), labeling TGF alpha with ab208156 at 1/100 dilution, followed by Goat Anti-Rabbit IgG (Alexa Fluor® 488) (**ab150077**) secondary antibody at 1/1000 dilution (green). Confocal image showing cytoplasmic staining on HepG2 cells, treated with Brefeldin A (10  $\mu$ M, 18 hours). The nuclear counter stain is DAPI (blue). Tubulin is detected with Anti-alpha Tubulin antibody - Loading Control (**ab7291**) at 1/1000 dilution and Goat Anti-Mouse IgG (AlexaFluor®594) preadsorbed (**ab150120**) at 1/1000 dilution (red).

The negative controls are as follows:

-ve control 1: ab208156 at 1/100 dilution followed by **ab150120** at 1/1000 dilution.

-ve control 2: **ab7291** at 1/1000 dilution followed by **ab150077** at 1/1000 dilution.



Immunoprecipitation - Anti-TGF alpha antibody [EPR15346] (ab208156)

TGF alpha was immunoprecipitated from 1mg of Ramos (Human Burkitt's lymphoma cell line) whole cell lysate with ab208156 at 1/40 dilution. Western blot was performed from the immunoprecipitate using ab208156 at 1/1000 dilution. VeriBlot for IP Detection Reagent (HRP) ([ab131366](#)), was used for detection at 1/10000 dilution.

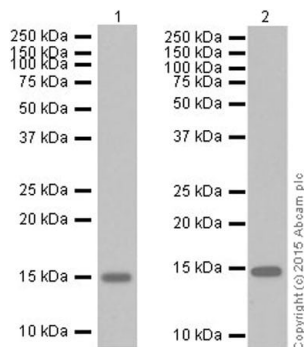
Lane 1: Ramos whole cell lysate, 10µg (Input).

Lane 2: ab208156 IP in Ramos whole cell lysate.

Lane 3: Rabbit IgG,monoclonal [EPR25A]-Isotype Control ([ab172730](#)) instead of ab208156 in Ramos whole cell lysate.

Blocking and dilution buffer and concentration: 5% NFDm/TBST.

Exposure time: 30 seconds.



Western blot - Anti-TGF alpha antibody [EPR15346] (ab208156)

**All lanes** : Anti-TGF alpha antibody [EPR15346] (ab208156) at 1/1000 dilution

**Lane 1** : HepG2 (Human liver hepatocellular carcinoma cell line) whole cell lysate

**Lane 2** : Ramos (Human Burkitt's lymphoma cell line) whole cell lysate

Lysates/proteins at 10 µg per lane.

### Secondary

**All lanes** : Goat Anti-Rabbit IgG H&L (HRP) ([ab97051](#)) at 1/100000 dilution





**Predicted band size:** 17 kDa

**Observed band size:** 15 kDa

Blocking/Dilution buffer: 5% NFDm/TBST.

Exposure time: Lane 1: 15 seconds; Lane 2: 3 minutes.

Why choose a recombinant antibody?

 <b>Research with confidence</b> Consistent and reproducible results	 <b>Long-term and scalable supply</b> Recombinant technology
 <b>Success from the first experiment</b> Confirmed specificity	 <b>Ethical standards compliant</b> Animal-free production

Anti-TGF alpha antibody [EPR15346] (ab208156)

**Please note:** All products are "FOR RESEARCH USE ONLY. NOT FOR USE IN DIAGNOSTIC PROCEDURES"

### Our Abpromise to you: Quality guaranteed and expert technical support

---

- Replacement or refund for products not performing as stated on the datasheet
- Valid for 12 months from date of delivery
- Response to your inquiry within 24 hours
- We provide support in Chinese, English, French, German, Japanese and Spanish
- Extensive multi-media technical resources to help you
- We investigate all quality concerns to ensure our products perform to the highest standards

If the product does not perform as described on this datasheet, we will offer a refund or replacement. For full details of the Abpromise, please visit <https://www.abcam.com/abpromise> or contact our technical team.

### Terms and conditions

---

- Guarantee only valid for products bought direct from Abcam or one of our authorized distributors