

## Product datasheet

# Anti-TGF beta 1 + 2 antibody [EPR5443] ab124894

Recombinant **RabMAb**

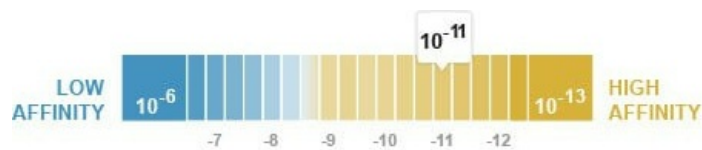
[1 References](#) [4 Images](#)

### Overview

<b>Product name</b>	Anti-TGF beta 1 + 2 antibody [EPR5443]
<b>Description</b>	Rabbit monoclonal [EPR5443] to TGF beta 1 + 2
<b>Host species</b>	Rabbit
<b>Specificity</b>	ab124894 recognises TGF beta 1 and 2.
<b>Tested applications</b>	<b>Suitable for:</b> WB <b>Unsuitable for:</b> Flow Cyt, ICC/IF, IHC-P or IP
<b>Species reactivity</b>	<b>Reacts with:</b> Mouse, Human <b>Does not react with:</b> Rat
<b>Immunogen</b>	Synthetic peptide. This information is proprietary to Abcam and/or its suppliers.
<b>Positive control</b>	A549 lysate, K562 lysate and L929 lysate.
<b>General notes</b>	This product is a recombinant monoclonal antibody, which offers several advantages including: <ul style="list-style-type: none"> <li>- High batch-to-batch consistency and reproducibility</li> <li>- Improved sensitivity and specificity</li> <li>- Long-term security of supply</li> <li>- Animal-free production</li> </ul> For more information <a href="#">see here</a> . Our RabMAb <sup>®</sup> technology is a patented hybridoma-based technology for making rabbit monoclonal antibodies. For details on our patents, please refer to <a href="#">RabMAb<sup>®</sup> patents</a> .

### Properties

<b>Form</b>	Liquid
<b>Storage instructions</b>	Shipped at 4°C. Store at -20°C. Stable for 12 months at -20°C.
<b>Dissociation constant (K<sub>D</sub>)</b>	K <sub>D</sub> = 8.64 x 10 <sup>-11</sup> M



[Learn more about K<sub>D</sub>](#)

<b>Storage buffer</b>	pH: 7.2 Preservative: 0.01% Sodium azide Constituents: 9% PBS, 40% Glycerol (glycerin, glycerine), 0.05% BSA, 50% Tissue culture supernatant
<b>Purity</b>	Protein A purified
<b>Clonality</b>	Monoclonal
<b>Clone number</b>	EPR5443
<b>Isotype</b>	IgG

## Applications

**The Abpromise guarantee** Our **Abpromise guarantee** covers the use of ab124894 in the following tested applications. The application notes include recommended starting dilutions; optimal dilutions/concentrations should be determined by the end user.

Application	Abreviews	Notes
WB		1/1000 - 1/10000. Predicted molecular weight: 44, 48 kDa.

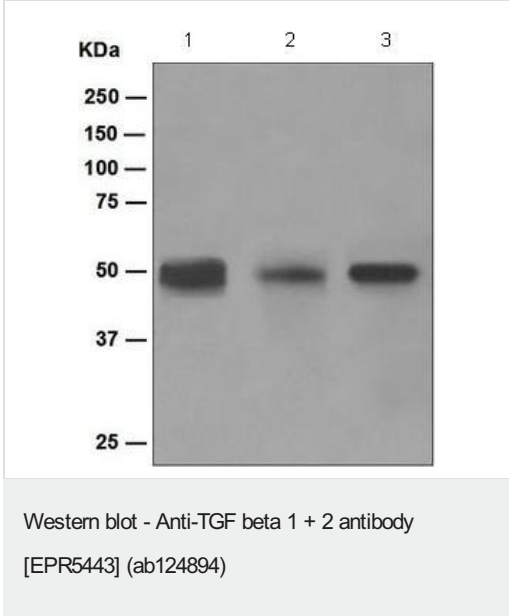
**Application notes** Is unsuitable for Flow Cyt, ICC/IF, IHC-P or IP.

## Target

**Relevance** Function: TGF beta 1 is a multifunctional protein that controls proliferation, differentiation and other functions in many cell types. Many cells synthesize TGFB1 and have specific receptors for it. It positively and negatively regulates many other growth factors. It plays an important role in bone remodeling as it is a potent stimulator of osteoblastic bone formation, causing chemotaxis, proliferation and differentiation in committed osteoblasts. The inactive form consists of a TGFB1 homodimer non-covalently linked to a latency-associated peptide (LAP) homodimer. The inactive complex can contain a latent TGFB1-binding protein. The active form is a homodimer of mature TGFB1; disulfide-linked. Heterodimers of TGFB1/TGFB2 have been found in bone. Interacts with CD109 and DPT. Interacts with ASPN. Function: TGF beta 2 has suppressive effects on interleukin-2 dependent T-cell growth. Tissue specificity: TGF beta 1 is highly expressed in bone. Abundantly expressed in articular cartilage and chondrocytes and is increased in osteoarthritis (OA). Co-localizes with ASPN in chondrocytes within OA lesions of articular cartilage. Similarity: Both belong to the TGF-beta family.

**Cellular localization** Secreted

## Images



**All lanes :** Anti-TGF beta 1 + 2 antibody [EPR5443] (ab124894) at 1/1000 dilution

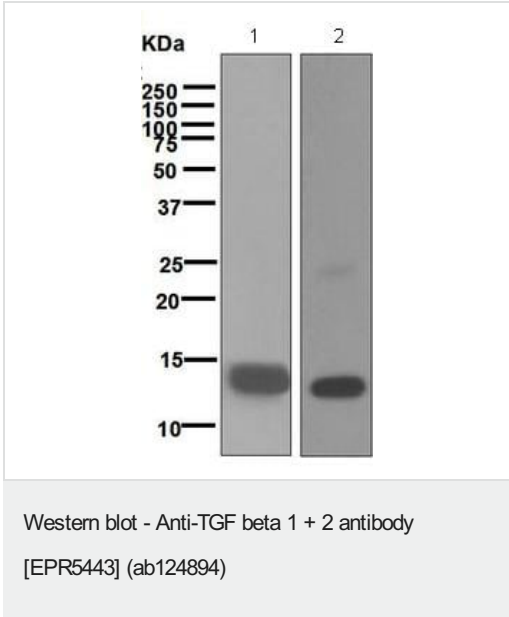
**Lane 1 :** A549 cell lysate

**Lane 2 :** K562 lysate

**Lane 3 :** L929 lysate

Lysates/proteins at 10 µg per lane.

**Predicted band size:** 44, 48 kDa



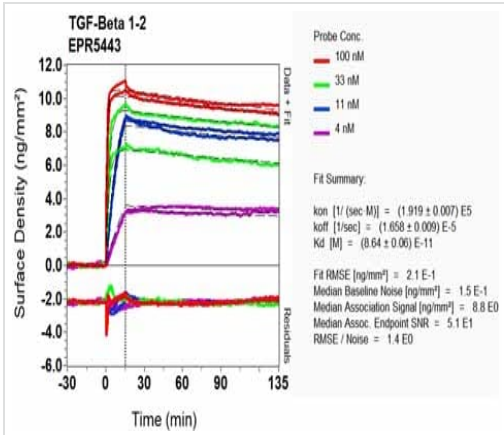
**All lanes :** Anti-TGF beta 1 + 2 antibody [EPR5443] (ab124894) at 1/1000 dilution

**Lane 1 :** TGF beta 2 recombinant protein

**Lane 2 :** TGF beta 1 recombinant protein

Lysates/proteins at 10 µg per lane.

**Predicted band size:** 44, 48 kDa



SPR Scanning - Anti-TGF beta 1 + 2 antibody  
 [EPR5443] (ab124894)

Equilibrium dissociation constant ( $K_D$ )

Learn more about  $K_D$

[Click here to learn more about  \$K\_D\$](#)

Why choose a recombinant antibody?

**Research with confidence**  
 Consistent and reproducible results

**Long-term and scalable supply**  
 Recombinant technology

**Success from the first experiment**  
 Confirmed specificity

**Ethical standards compliant**  
 Animal-free production

Anti-TGF beta 1 + 2 antibody [EPR5443] (ab124894)

**Please note:** All products are "FOR RESEARCH USE ONLY. NOT FOR USE IN DIAGNOSTIC PROCEDURES"

**Our Abpromise to you: Quality guaranteed and expert technical support**

- Replacement or refund for products not performing as stated on the datasheet
- Valid for 12 months from date of delivery
- Response to your inquiry within 24 hours

- We provide support in Chinese, English, French, German, Japanese and Spanish
- Extensive multi-media technical resources to help you
- We investigate all quality concerns to ensure our products perform to the highest standards

If the product does not perform as described on this datasheet, we will offer a refund or replacement. For full details of the Abpromise, please visit <https://www.abcam.com/abpromise> or contact our technical team.

### **Terms and conditions**

---

- Guarantee only valid for products bought direct from Abcam or one of our authorized distributors