




Anti-TGIF2 antibody ab222131

[1 Abreviews](#) [1 Image](#)

Overview

Product name	Anti-TGIF2 antibody
Description	Rabbit polyclonal to TGIF2
Host species	Rabbit
Tested applications	Suitable for: ICC/IF
Species reactivity	Reacts with: Human Predicted to work with: Mouse, Rat 
Immunogen	Recombinant fragment corresponding to Human TGIF2 aa 100-200. Database link: Q9GZN2  Run BLAST with  Run BLAST with
Positive control	ICC/IF: Caco-2 cells.
General notes	<p>The Life Science industry has been in the grips of a reproducibility crisis for a number of years. Abcam is leading the way in addressing this with our range of recombinant monoclonal antibodies and knockout edited cell lines for gold-standard validation. Please check that this product meets your needs before purchasing.</p> <p>If you have any questions, special requirements or concerns, please send us an inquiry and/or contact our Support team ahead of purchase. Recommended alternatives for this product can be found below, along with publications, customer reviews and Q&As</p>

Properties

Form	Liquid
Storage instructions	Shipped at 4°C. Store at +4°C short term (1-2 weeks). Upon delivery aliquot. Store at -20°C long term. Avoid freeze / thaw cycle.
Storage buffer	pH: 7.20 Preservative: 0.02% Sodium azide Constituents: 40% Glycerol (glycerin, glycerine), PBS
Purity	Immunogen affinity purified
Clonality	Polyclonal
Isotype	IgG

Applications

The Abpromise guarantee

Our **Abpromise guarantee** covers the use of ab222131 in the following tested applications.

The application notes include recommended starting dilutions; optimal dilutions/concentrations should be determined by the end user.

Application	Abreviews	Notes
ICC/IF		Use a concentration of 0.25 - 2 µg/ml. Fixation/Permeabilization: PFA/Triton X-100.

Target

Function

Transcriptional repressor, which probably repress transcription by binding directly the 5'-CTGTCAA-3' DNA sequence or by interacting with TGF-beta activated SMAD proteins. Probably represses transcription via the recruitment of histone deacetylase proteins.

Tissue specificity

Widely expressed. Highly expressed in heart, kidney and testis. Weakly expressed in brain and prostate.

Sequence similarities

Belongs to the TALE/TGIF homeobox family.
Contains 1 homeobox DNA-binding domain.

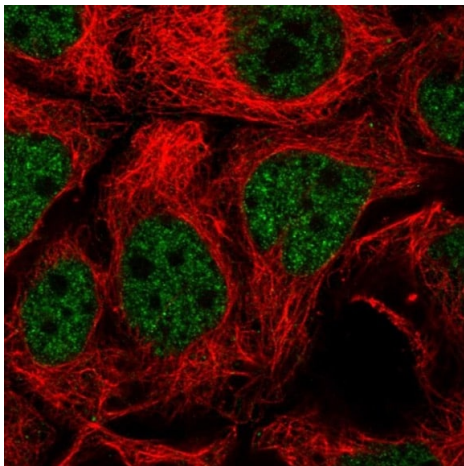
Post-translational modifications

The C-terminal part is phosphorylated in response to EGF signaling by the Ras/MAPK pathway.

Cellular localization

Nucleus. Excluded from nucleoli.

Images



PFA-fixed, Triton X-100 permeabilized Caco-2 (human colorectal adenocarcinoma cell line) cells stained for TGIF2 (green) using ab222131 at 4 µg/ml in ICC/IF.

Immunocytochemistry/ Immunofluorescence - Anti-TGIF2 antibody (ab222131)

Please note: All products are "FOR RESEARCH USE ONLY. NOT FOR USE IN DIAGNOSTIC PROCEDURES"

Our Abpromise to you: Quality guaranteed and expert technical support

- Replacement or refund for products not performing as stated on the datasheet
- Valid for 12 months from date of delivery
- Response to your inquiry within 24 hours
- We provide support in Chinese, English, French, German, Japanese and Spanish
- Extensive multi-media technical resources to help you
- We investigate all quality concerns to ensure our products perform to the highest standards

If the product does not perform as described on this datasheet, we will offer a refund or replacement. For full details of the Abpromise, please visit <https://www.abcam.com/abpromise> or contact our technical team.

Terms and conditions

- Guarantee only valid for products bought direct from Abcam or one of our authorized distributors