


### Anti-THOC5 antibody ab86070

[3 References](#) [2 Images](#)

#### Overview

<b>Product name</b>	Anti-THOC5 antibody
<b>Description</b>	Rabbit polyclonal to THOC5
<b>Host species</b>	Rabbit
<b>Tested applications</b>	<b>Suitable for:</b> WB, IP
<b>Species reactivity</b>	<b>Reacts with:</b> Mouse, Human <b>Predicted to work with:</b> Rat, Rabbit, Horse, Chicken, Guinea pig, Cow, Dog, Turkey, Xenopus laevis, Chimpanzee, Rhesus monkey, Gorilla, Orangutan, Xenopus tropicalis 
<b>Immunogen</b>	Synthetic peptide corresponding to a region between amino acids 300 and 325 of Human THOC5 (NP_003669.4)
<b>Positive control</b>	Hela, 293T or NIH3T3 cell lysate
<b>General notes</b>	<p>The Life Science industry has been in the grips of a reproducibility crisis for a number of years. Abcam is leading the way in addressing this with our range of recombinant monoclonal antibodies and knockout edited cell lines for gold-standard validation. Please check that this product meets your needs before purchasing.</p> <p>If you have any questions, special requirements or concerns, please send us an inquiry and/or contact our Support team ahead of purchase. Recommended alternatives for this product can be found below, along with publications, customer reviews and Q&amp;As</p>

#### Properties

<b>Form</b>	Liquid
<b>Storage instructions</b>	Shipped at 4°C. Upon delivery aliquot and store at -20°C. Avoid freeze / thaw cycles.
<b>Storage buffer</b>	pH: 6.8 Preservative: 0.09% Sodium azide Constituents: 0.1% BSA, Tris buffered saline
<b>Purity</b>	Immunogen affinity purified
<b>Clonality</b>	Polyclonal
<b>Isotype</b>	IgG

#### Applications

## The Abpromise guarantee

Our **Abpromise guarantee** covers the use of ab86070 in the following tested applications.

The application notes include recommended starting dilutions; optimal dilutions/concentrations should be determined by the end user.

Application	Abreviews	Notes
WB		1/2000 - 1/10000. Predicted molecular weight: 79 kDa.
IP		Use at 2-5 µg/mg of lysate.

## Target

### Function

Component the THO subcomplex of the TREX complex. The TREX complex specifically associates with spliced mRNA and not with unspliced pre-mRNA. It is recruited to spliced mRNAs by a transcription-independent mechanism. Binds to mRNA upstream of the exon-junction complex (EJC) and is recruited in a splicing- and cap-dependent manner to a region near the 5' end of the mRNA where it functions in mRNA export. The recruitment occurs via an interaction between ALYREF/THOC4 and the cap-binding protein NCBP1. The TREX complex is essential for the export of Kaposi's sarcoma-associated herpesvirus (KSHV) intronless mRNAs and infectious virus production. The recruitment of the TREX complex to the intronless viral mRNA occurs via an interaction between KSHV ORF57 protein and ALYREF/THOC4. DDX39B functions as a bridge between ALYREF/THOC4 and the THO complex. THOC5 in conjunction with ALYREF/THOC4 functions in NXF1-NXT1 mediated nuclear export of HSP70 mRNA. Regulates the expression of myeloid transcription factors CEBPA, CEBPB and GAB2 by enhancing the levels of phosphatidylinositol 3,4,5-trisphosphate. May be involved in the differentiation of granulocytes and adipocytes. Essential for hematopoietic primitive cell survival and plays an integral role in monocytic development.

### Tissue specificity

Ubiquitously expressed.

### Sequence similarities

Belongs to the THOC5 family.

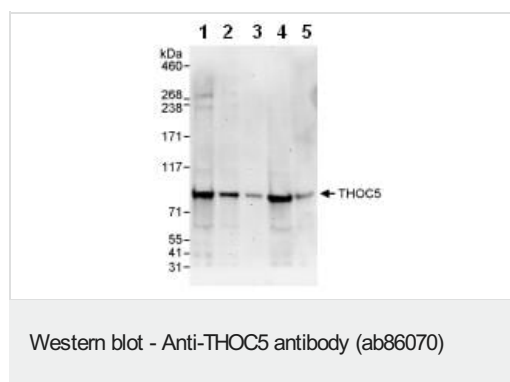
### Post-translational modifications

Phosphorylated on tyrosine upon binding to activated CSF1R; which causes a dissociation of the two proteins. Phosphorylation on Ser-5 and/or Ser-6 is required for nuclear export. Phosphorylated on Thr-328 in insulin-stimulated adipocytes (By similarity). Phosphorylated upon DNA damage, probably by ATM or ATR.

### Cellular localization

Nucleus. Cytoplasm. Shuttles between nucleus and cytoplasm.

## Images



**All lanes :** Anti-THOC5 antibody (ab86070) at 0.04 µg/ml

**Lane 1 :** Hela whole cell lysate at 50 µg

**Lane 2 :** Hela whole cell lysate at 15 µg

**Lane 3 :** Hela whole cell lysate at 5 µg

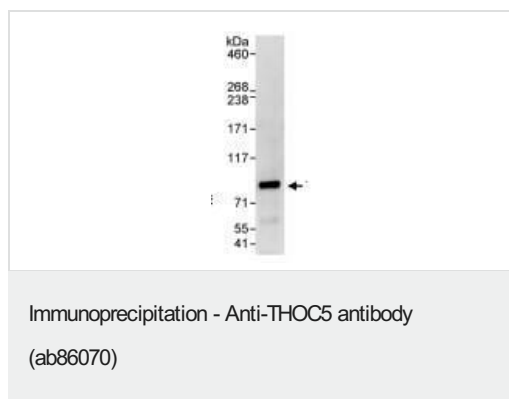
**Lane 4 :** 293T whole cell lysate at 50 µg

**Lane 5 :** NIH3T3 whole cell lysate at 50 µg

Developed using the ECL technique.

**Predicted band size:** 79 kDa

**Exposure time:** 90 seconds



Detection of THOC5 by Western blot of Immunoprecipitate.  
ab86070, at 0.4 µg/ml, staining THOC5 in HeLa whole cell lysate  
immunoprecipitated using ab86070 at 3 µg/mg lysate (1 mg/IP;  
20% of IP loaded/lane).

Detection: Chemiluminescence with an exposure time of 30  
seconds.

**Please note:** All products are "FOR RESEARCH USE ONLY. NOT FOR USE IN DIAGNOSTIC PROCEDURES"

### Our Abpromise to you: Quality guaranteed and expert technical support

---

- Replacement or refund for products not performing as stated on the datasheet
- Valid for 12 months from date of delivery
- Response to your inquiry within 24 hours
- We provide support in Chinese, English, French, German, Japanese and Spanish
- Extensive multi-media technical resources to help you
- We investigate all quality concerns to ensure our products perform to the highest standards

If the product does not perform as described on this datasheet, we will offer a refund or replacement. For full details of the Abpromise, please visit <https://www.abcam.com/abpromise> or contact our technical team.

### Terms and conditions

---

- Guarantee only valid for products bought direct from Abcam or one of our authorized distributors