



Anti-Thrombomodulin antibody ab230189

[1 References](#) [2 Images](#)

Overview

Product name	Anti-Thrombomodulin antibody
Description	Rabbit polyclonal to Thrombomodulin
Host species	Rabbit
Tested applications	Suitable for: WB
Species reactivity	Reacts with: Mouse, Rat, Human
Immunogen	Recombinant fragment corresponding to Human Thrombomodulin aa 200-500. Database link: P07204  Run BLAST with  Run BLAST with
Positive control	WB: Rat heart tissue lysate; mouse heart, kidney and brain tissue lysates; HepG2, A549 and A431 whole cell lysates.
General notes	<p>The Life Science industry has been in the grips of a reproducibility crisis for a number of years. Abcam is leading the way in addressing this with our range of recombinant monoclonal antibodies and knockout edited cell lines for gold-standard validation. Please check that this product meets your needs before purchasing.</p> <p>If you have any questions, special requirements or concerns, please send us an inquiry and/or contact our Support team ahead of purchase. Recommended alternatives for this product can be found below, along with publications, customer reviews and Q&As</p>

Properties

Form	Liquid
Storage instructions	Shipped at 4°C. Store at +4°C short term (1-2 weeks). Upon delivery aliquot. Store at -20°C long term. Avoid freeze / thaw cycle.
Storage buffer	pH: 7.30 Preservative: 0.02% Sodium azide Constituents: PBS, 50% Glycerol (glycerin, glycerine)
Purity	Immunogen affinity purified
Clonality	Polyclonal
Isotype	IgG

Applications

The Abpromise guarantee

Our **Abpromise guarantee** covers the use of ab230189 in the following tested applications.

The application notes include recommended starting dilutions; optimal dilutions/concentrations should be determined by the end user.

Application	Abreviews	Notes
WB		1/1000 - 1/5000. Detects a band of approximately 60 kDa (predicted molecular weight: 60 kDa).

Target

Function

Thrombomodulin is a specific endothelial cell receptor that forms a 1:1 stoichiometric complex with thrombin. This complex is responsible for the conversion of protein C to the activated protein C (protein Ca). Once evolved, protein Ca scissions the activated cofactors of the coagulation mechanism, factor Va and factor VIIIa, and thereby reduces the amount of thrombin generated.

Tissue specificity

Endothelial cells are unique in synthesizing thrombomodulin.

Involvement in disease

Defects in THBD are the cause of thrombophilia due to thrombomodulin defect (THR-THBD) [MIM:188040]. A hemostatic disorder characterized by a tendency to thrombosis.

Defects in THBD are a cause of susceptibility to hemolytic uremic syndrome atypical type 6 (AHUS6) [MIM:612926]. An atypical form of hemolytic uremic syndrome. It is a complex genetic disease characterized by microangiopathic hemolytic anemia, thrombocytopenia, renal failure and absence of episodes of enterocolitis and diarrhea. In contrast to typical hemolytic uremic syndrome, atypical forms have a poorer prognosis, with higher death rates and frequent progression to end-stage renal disease. Note=Susceptibility to the development of atypical hemolytic uremic syndrome can be conferred by mutations in various components of or regulatory factors in the complement cascade system. Other genes may play a role in modifying the phenotype.

Sequence similarities

Contains 1 C-type lectin domain.

Contains 6 EGF-like domains.

Post-translational modifications

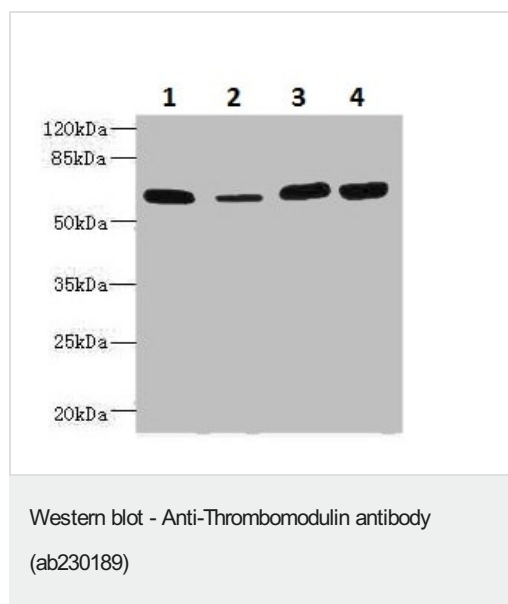
N-glycosylated.

The iron and 2-oxoglutarate dependent 3-hydroxylation of aspartate and asparagine is (R) stereospecific within EGF domains.

Cellular localization

Membrane.

Images



All lanes : Anti-Thrombomodulin antibody (ab230189) at 1/1000 dilution

Lane 1 : Rat heart lysate

Lane 2 : Mouse kidney lysate

Lane 3 : A549 (human lung carcinoma cell line) whole cell lysate

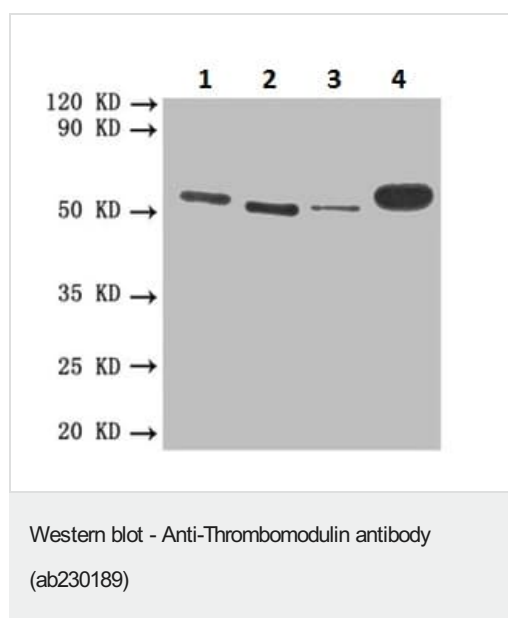
Lane 4 : A431 (human epidermoid carcinoma cell line) whole cell lysate

Secondary

All lanes : Goat anti-Rabbit IgG at 1/10000 dilution

Predicted band size: 60 kDa

Observed band size: 60 kDa



All lanes : Anti-Thrombomodulin antibody (ab230189) at 1/1000 dilution

Lane 1 : Mouse heart lysate

Lane 2 : Mouse kidney lysate

Lane 3 : Mouse brain lysate

Lane 4 : HepG2 (human liver hepatocellular carcinoma cell line) whole cell lysate

Secondary

All lanes : Goat anti-Rabbit IgG at 1/10000 dilution

Predicted band size: 60 kDa

Observed band size: 60 kDa

Please note: All products are "FOR RESEARCH USE ONLY. NOT FOR USE IN DIAGNOSTIC PROCEDURES"

Our Abpromise to you: Quality guaranteed and expert technical support

- Replacement or refund for products not performing as stated on the datasheet
- Valid for 12 months from date of delivery
- Response to your inquiry within 24 hours

- We provide support in Chinese, English, French, German, Japanese and Spanish
- Extensive multi-media technical resources to help you
- We investigate all quality concerns to ensure our products perform to the highest standards

If the product does not perform as described on this datasheet, we will offer a refund or replacement. For full details of the Abpromise, please visit <https://www.abcam.com/abpromise> or contact our technical team.

Terms and conditions

- Guarantee only valid for products bought direct from Abcam or one of our authorized distributors