


Product datasheet

Anti-THUMPD1 antibody ab199850

[2 Images](#)

Overview

Product name	Anti-THUMPD1 antibody
Description	Rabbit polyclonal to THUMPD1
Host species	Rabbit
Tested applications	Suitable for: WB, IP
Species reactivity	Reacts with: Human Predicted to work with: Chimpanzee 
Immunogen	Synthetic peptide within Human THUMPD1 aa 300 to the C-terminus (C terminal). The exact immunogen sequence used to generate this antibody is proprietary information. If additional detail on the immunogen is needed to determine the suitability of the antibody for your needs, please contact our Scientific Support team to discuss your requirements. (NP_060206.2). Database link: Q9NXG2 Run BLAST with Run BLAST with
Positive control	HeLa, 293T and Jurkat cell lysate
General notes	<p>The Life Science industry has been in the grips of a reproducibility crisis for a number of years. Abcam is leading the way in addressing this with our range of recombinant monoclonal antibodies and knockout edited cell lines for gold-standard validation. Please check that this product meets your needs before purchasing.</p> <p>If you have any questions, special requirements or concerns, please send us an inquiry and/or contact our Support team ahead of purchase. Recommended alternatives for this product can be found below, along with publications, customer reviews and Q&As</p>

Properties

Form	Liquid
Storage instructions	Shipped at 4°C. Store at +4°C short term (1-2 weeks). Upon delivery aliquot. Store at -20°C long term. Avoid freeze / thaw cycle.
Storage buffer	pH: 7 Preservative: 0.09% Sodium azide Constituent: 99% Tris citrate/phosphate pH 7 to 8

Purity	Immunogen affinity purified
Clonality	Polyclonal
Isotype	IgG

Applications

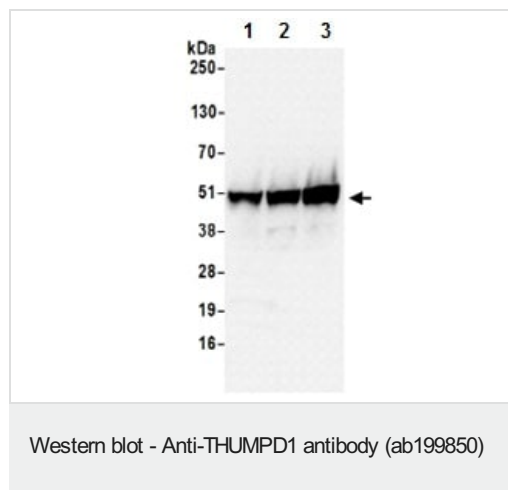
The Abpromise guarantee Our **Abpromise guarantee** covers the use of ab199850 in the following tested applications. The application notes include recommended starting dilutions; optimal dilutions/concentrations should be determined by the end user.

Application	Abreviews	Notes
WB		1/2000 - 1/10000. Predicted molecular weight: 39 kDa.
IP		Use at 2-10 µg/mg of lysate.

Target

Sequence similarities Belongs to the THUMPD1 family.
Contains 1 THUMP domain.

Images



All lanes : Anti-THUMPD1 antibody (ab199850) at 0.1 µg/ml

Lane 1 : HeLa cell lysate

Lane 2 : 293T cell lysate

Lane 3 : Jurkat cell lysate

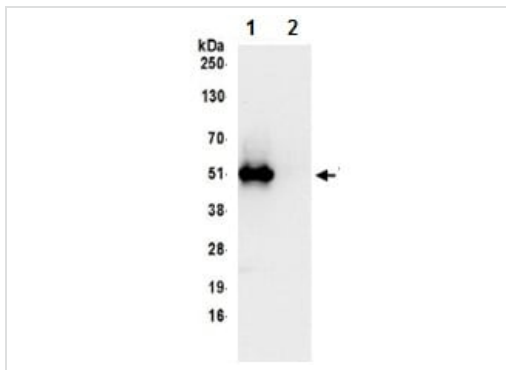
Lysates/proteins at 50 µg per lane.

Developed using the ECL technique.

Predicted band size: 39 kDa

Exposure time: 10 seconds

Lysates prepared using NETN lysis buffer.



Immunoprecipitation - Anti-THUMP1 antibody
(ab199850)

Detection of THUMP1 in immunoprecipitates of 293T whole cell lysates prepared using NETN lysis buffer (1 mg for IP, 20% of IP loaded) using ab199850 at 6 μ g/mg lysate for IP (Lane 1) and at 0.4 μ g/ml for subsequent Western blot detection. Lane 2 represents control IgG IP.

Detection: Chemiluminescence with an exposure time of 10 seconds.

Please note: All products are "FOR RESEARCH USE ONLY. NOT FOR USE IN DIAGNOSTIC PROCEDURES"

Our Abpromise to you: Quality guaranteed and expert technical support

- Replacement or refund for products not performing as stated on the datasheet
- Valid for 12 months from date of delivery
- Response to your inquiry within 24 hours
- We provide support in Chinese, English, French, German, Japanese and Spanish
- Extensive multi-media technical resources to help you
- We investigate all quality concerns to ensure our products perform to the highest standards

If the product does not perform as described on this datasheet, we will offer a refund or replacement. For full details of the Abpromise, please visit <https://www.abcam.com/abpromise> or contact our technical team.

Terms and conditions

- Guarantee only valid for products bought direct from Abcam or one of our authorized distributors