


## Product datasheet

# Anti-Thymidine Phosphorylase antibody - N-terminal ab180783

★★★★★ [1 Abreviews](#) [2 References](#) [6 Images](#)

### Overview

<b>Product name</b>	Anti-Thymidine Phosphorylase antibody - N-terminal
<b>Description</b>	Rabbit polyclonal to Thymidine Phosphorylase - N-terminal
<b>Host species</b>	Rabbit
<b>Tested applications</b>	<b>Suitable for:</b> WB, IHC-P, ICC/IF
<b>Species reactivity</b>	<b>Reacts with:</b> Human <b>Predicted to work with:</b> Mouse, Rat 
<b>Immunogen</b>	Recombinant full length protein corresponding to Human Thymidine Phosphorylase aa 1-482 (N terminal). Database link: <a href="#">P19971</a>
<b>Positive control</b>	A549 and THP1 cell lysates.
<b>General notes</b>	<p>The Life Science industry has been in the grips of a reproducibility crisis for a number of years. Abcam is leading the way in addressing this with our range of recombinant monoclonal antibodies and knockout edited cell lines for gold-standard validation. Please check that this product meets your needs before purchasing.</p> <p>If you have any questions, special requirements or concerns, please send us an inquiry and/or contact our Support team ahead of purchase. Recommended alternatives for this product can be found below, along with publications, customer reviews and Q&amp;As</p>

### Properties

<b>Form</b>	Liquid
<b>Storage instructions</b>	Shipped at 4°C. Store at +4°C short term (1-2 weeks). Upon delivery aliquot. Store at -20°C long term. Avoid freeze / thaw cycle.
<b>Storage buffer</b>	pH: 7.30 Preservative: 0.02% Sodium azide Constituents: 49% PBS, 50% Glycerol
<b>Purity</b>	Immunogen affinity purified
<b>Clonality</b>	Polyclonal
<b>Isotype</b>	IgG

## Applications

### The Abpromise guarantee

Our **Abpromise guarantee** covers the use of ab180783 in the following tested applications.

The application notes include recommended starting dilutions; optimal dilutions/concentrations should be determined by the end user.

Application	Abreviews	Notes
WB	★★★★★ (1)	1/500 - 1/2000. Predicted molecular weight: 50 kDa.
IHC-P		1/50 - 1/200.
ICC/IF		Use at an assay dependent concentration.

## Target

### Function

May have a role in maintaining the integrity of the blood vessels. Has growth promoting activity on endothelial cells, angiogenic activity in vivo and chemotactic activity on endothelial cells in vitro. Catalyzes the reversible phosphorolysis of thymidine. The produced molecules are then utilized as carbon and energy sources or in the rescue of pyrimidine bases for nucleotide synthesis.

### Pathway

Pyrimidine metabolism; dTMP biosynthesis via salvage pathway; dTMP from thymine: step 1/2.

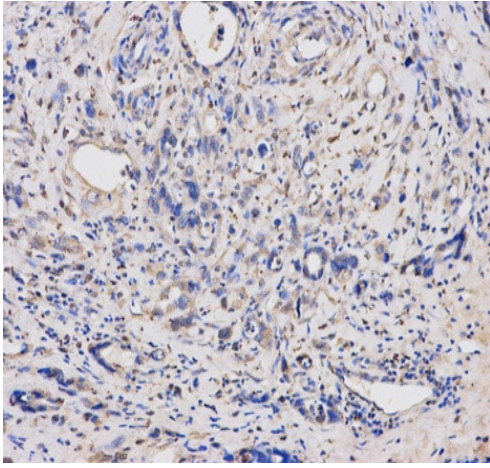
### Involvement in disease

Mitochondrial DNA depletion syndrome 1 (MTDPS1) [MIM:603041]: A multisystem disease associated with mitochondrial dysfunction. It is clinically characterized by onset between the second and fifth decades of life, ptosis, progressive external ophthalmoplegia, gastrointestinal dysmotility (often pseudoobstruction), diffuse leukoencephalopathy, cachexia, peripheral neuropathy, and myopathy. Note=The disease is caused by mutations affecting the gene represented in this entry.

### Sequence similarities

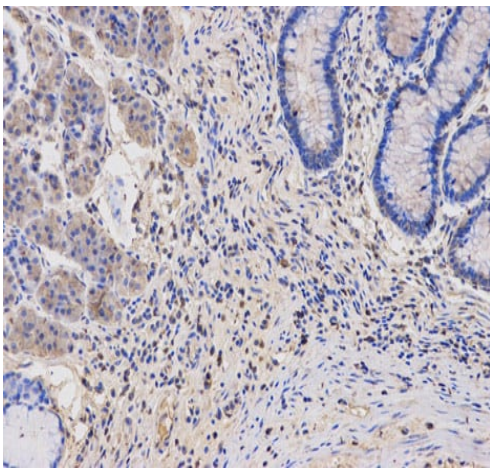
Belongs to the thymidine/pyrimidine-nucleoside phosphorylase family.

## Images



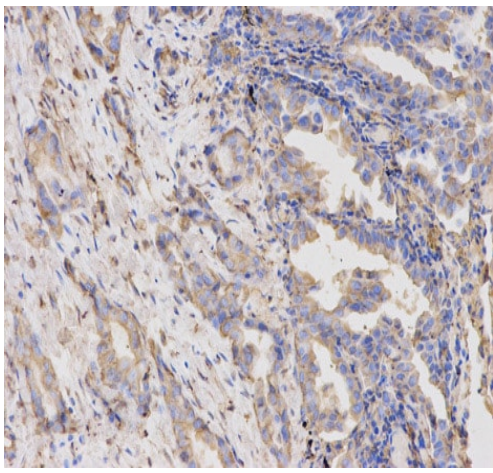
Immunohistochemistry (Formalin/PFA-fixed paraffin-embedded sections) - Anti-Thymidine Phosphorylase antibody - N-terminal (ab180783)

Immunohistochemistry (Formalin/PFA-fixed paraffin-embedded sections) analysis of human stomach cancer tissue labelling Thymidine Phosphorylase with ab180783 at 1/100. Magnification: 200x.



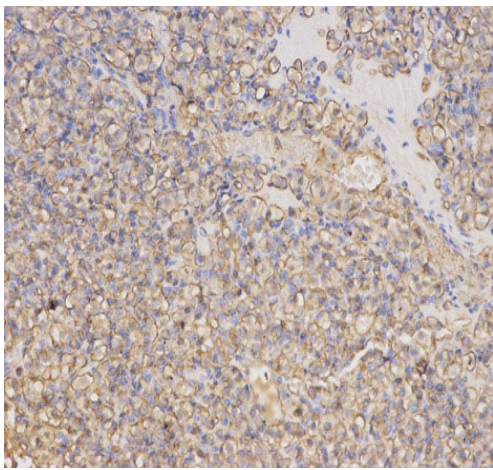
Immunohistochemistry (Formalin/PFA-fixed paraffin-embedded sections) - Anti-Thymidine Phosphorylase antibody - N-terminal (ab180783)

Immunohistochemistry (Formalin/PFA-fixed paraffin-embedded sections) analysis of human stomach tissue labelling Thymidine Phosphorylase with ab180783 at 1/100. Magnification: 200x.



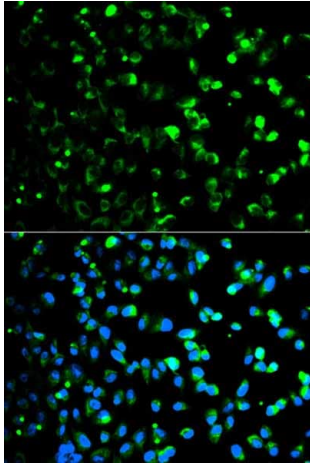
Immunohistochemistry (Formalin/PFA-fixed paraffin-embedded sections) analysis of human lung cancer tissue labelling Thymidine Phosphorylase with ab180783 at 1/100. Magnification: 200x.

Immunohistochemistry (Formalin/PFA-fixed paraffin-embedded sections) - Anti-Thymidine Phosphorylase antibody - N-terminal (ab180783)



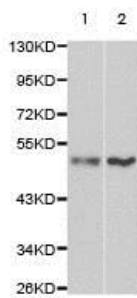
Immunohistochemistry (Formalin/PFA-fixed paraffin-embedded sections) analysis of human kidney cancer tissue labelling Thymidine Phosphorylase with ab180783 at 1/100. Magnification: 200x.

Immunohistochemistry (Formalin/PFA-fixed paraffin-embedded sections) - Anti-Thymidine Phosphorylase antibody - N-terminal (ab180783)



Immunocytochemistry/Immunofluorescence analysis of HeLa cells using ab180783. Blue DAPI for nuclear staining.

Immunocytochemistry/ Immunofluorescence - Anti-Thymidine Phosphorylase antibody - N-terminal (ab180783)



**All lanes :** Anti-Thymidine Phosphorylase antibody - N-terminal (ab180783) at 1/500 dilution

**Lane 1 :** A549 cell lysate

**Lane 2 :** THP1 cell lysate

**Predicted band size:** 50 kDa

Western blot - Anti-Thymidine Phosphorylase antibody - N-terminal (ab180783)

**Please note:** All products are "FOR RESEARCH USE ONLY. NOT FOR USE IN DIAGNOSTIC PROCEDURES"

### Our Abpromise to you: Quality guaranteed and expert technical support

- Replacement or refund for products not performing as stated on the datasheet
- Valid for 12 months from date of delivery
- Response to your inquiry within 24 hours
- We provide support in Chinese, English, French, German, Japanese and Spanish
- Extensive multi-media technical resources to help you
- We investigate all quality concerns to ensure our products perform to the highest standards

If the product does not perform as described on this datasheet, we will offer a refund or replacement. For full details of the Abpromise, please visit <https://www.abcam.com/abpromise> or contact our technical team.

### Terms and conditions

- Guarantee only valid for products bought direct from Abcam or one of our authorized distributors

