






# Anti-Thymosin beta 4 antibody ab167650

[3 References](#) [2 Images](#)

## Overview

<b>Product name</b>	Anti-Thymosin beta 4 antibody
<b>Description</b>	Mouse polyclonal to Thymosin beta 4
<b>Host species</b>	Mouse
<b>Tested applications</b>	<b>Suitable for:</b> WB, ICC/IF
<b>Species reactivity</b>	<b>Reacts with:</b> Human <b>Predicted to work with:</b> Mouse, Rat, Horse, Cow, Pig 
<b>Immunogen</b>	Full length protein, corresponding to amino acids 1-44 of Human Thymosin beta 4 (AAH01631.1).  <a href="#">Run BLAST with</a>   <a href="#">Run BLAST with</a> 
<b>Positive control</b>	Thymosin beta 4 transfected 293T cell lysate
<b>General notes</b>	<p>The Life Science industry has been in the grips of a reproducibility crisis for a number of years. Abcam is leading the way in addressing this with our range of recombinant monoclonal antibodies and knockout edited cell lines for gold-standard validation. Please check that this product meets your needs before purchasing.</p> <p>If you have any questions, special requirements or concerns, please send us an inquiry and/or contact our Support team ahead of purchase. Recommended alternatives for this product can be found below, along with publications, customer reviews and Q&amp;As</p>

## Properties

<b>Form</b>	Liquid
<b>Storage instructions</b>	Shipped at 4°C. Store at +4°C short term (1-2 weeks). Upon delivery aliquot. Store at -20°C long term.
<b>Storage buffer</b>	pH: 7.4 Constituent: 100% PBS
<b>Purity</b>	Protein A purified
<b>Clonality</b>	Polyclonal
<b>Isotype</b>	IgG

## Applications

## The Abpromise guarantee

Our **Abpromise guarantee** covers the use of ab167650 in the following tested applications.

The application notes include recommended starting dilutions; optimal dilutions/concentrations should be determined by the end user.

Application	Abreviews	Notes
WB		Use a concentration of 1 µg/ml. Predicted molecular weight: 5 kDa.
ICC/IF		Use a concentration of 10 µg/ml.

## Target

### Function

Plays an important role in the organization of the cytoskeleton (By similarity). Binds to and sequesters actin monomers (G actin) and therefore inhibits actin polymerization. Seraspenide inhibits the entry of hematopoietic pluripotent stem cells into the S-phase.

### Tissue specificity

Expressed in several hemopoietic cell lines and lymphoid malignant cells. Decreased levels in myeloma cells.

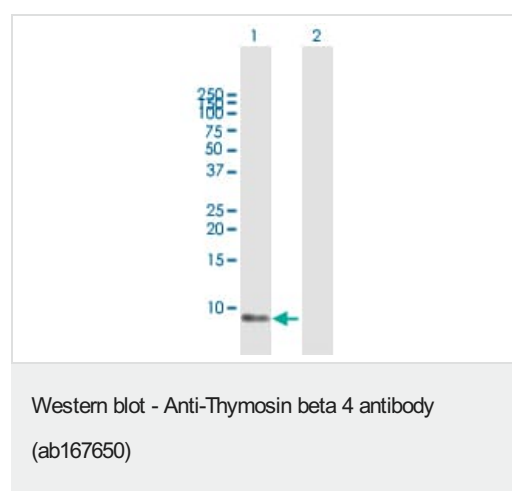
### Sequence similarities

Belongs to the thymosin beta family.

### Cellular localization

Cytoplasm > cytoskeleton.

## Images



**All lanes :** Anti-Thymosin beta 4 antibody (ab167650) at 1 µg/ml

**Lane 1 :** Thymosin beta 4 transfected 293T cell lysate

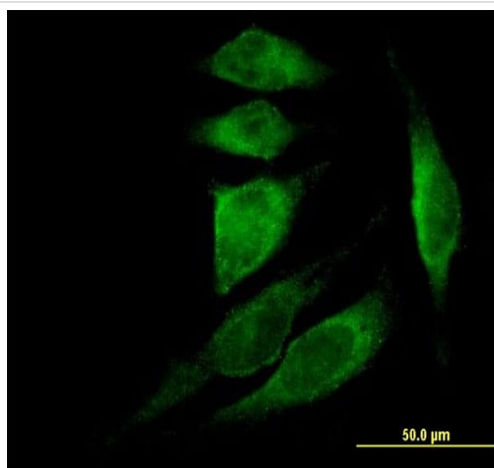
**Lane 2 :** Non-transfected 293T cell lysate

Lysates/proteins at 15 µl per lane.

### Secondary

**All lanes :** Goat Anti-Mouse IgG HRP at 1/2500 dilution

**Predicted band size:** 5 kDa



Immunofluorescent analysis of HeLa cells labeling Thymosin beta 4 with ab167650 at 10 μg/ml.

Immunocytochemistry/ Immunofluorescence - Anti-Thymosin beta 4 antibody (ab167650)

**Please note:** All products are "FOR RESEARCH USE ONLY. NOT FOR USE IN DIAGNOSTIC PROCEDURES"

### Our Abpromise to you: Quality guaranteed and expert technical support

---

- Replacement or refund for products not performing as stated on the datasheet
- Valid for 12 months from date of delivery
- Response to your inquiry within 24 hours
- We provide support in Chinese, English, French, German, Japanese and Spanish
- Extensive multi-media technical resources to help you
- We investigate all quality concerns to ensure our products perform to the highest standards

If the product does not perform as described on this datasheet, we will offer a refund or replacement. For full details of the Abpromise, please visit <https://www.abcam.com/abpromise> or contact our technical team.

### Terms and conditions

---

- Guarantee only valid for products bought direct from Abcam or one of our authorized distributors