


# Anti-Thyroid Hormone Receptor beta antibody ab155297

[2 Images](#)

### Overview

<b>Product name</b>	Anti-Thyroid Hormone Receptor beta antibody
<b>Description</b>	Rabbit polyclonal to Thyroid Hormone Receptor beta
<b>Host species</b>	Rabbit
<b>Tested applications</b>	<b>Suitable for:</b> WB, ICC/IF
<b>Species reactivity</b>	<b>Reacts with:</b> Human <b>Predicted to work with:</b> Mouse 
<b>Immunogen</b>	Recombinant fragment, corresponding to a region within amino acids 1-199 of Human Thyroid Hormone Receptor beta 1 (UniProt: P10828).
<b>Positive control</b>	293T, A431, H1299, HeLa, HepG2, MOLT4 and Raji cell lysates; Hela cells
<b>General notes</b>	<p>The Life Science industry has been in the grips of a reproducibility crisis for a number of years. Abcam is leading the way in addressing this with our range of recombinant monoclonal antibodies and knockout edited cell lines for gold-standard validation. Please check that this product meets your needs before purchasing.</p> <p>If you have any questions, special requirements or concerns, please send us an inquiry and/or contact our Support team ahead of purchase. Recommended alternatives for this product can be found below, along with publications, customer reviews and Q&amp;As</p>

### Properties

<b>Form</b>	Liquid
<b>Storage instructions</b>	Shipped at 4°C. Store at -20°C.
<b>Storage buffer</b>	<p>pH: 7.00</p> <p>Preservative: 0.01% Thimerosal (merthiolate)</p> <p>Constituents: 1.21% Tris, 0.75% Glycine, 10% Glycerol (glycerin, glycerine)</p>
<b>Purity</b>	Immunogen affinity purified
<b>Clonality</b>	Polyclonal
<b>Isotype</b>	IgG

## Applications

### The Abpromise guarantee

Our **Abpromise guarantee** covers the use of ab155297 in the following tested applications.

The application notes include recommended starting dilutions; optimal dilutions/concentrations should be determined by the end user.

Application	Abreviews	Notes
WB		1/500 - 1/3000. Predicted molecular weight: 53 kDa.
ICC/IF		1/100 - 1/1000.

## Target

### Function

High affinity receptor for triiodothyronine.

### Involvement in disease

Defects in THRB are the cause of generalized thyroid hormone resistance (GTHR) [MIM:188570, 274300]. GTHR is transmitted as an autosomal dominant trait, but an autosomal recessive form also exists. The disease is characterized by goiter, abnormal mental functions, increased susceptibility to infections, abnormal growth and bone maturation, tachycardia and deafness. Affected individuals may also have attention deficit-hyperactivity disorders (ADHD) and language difficulties. GTHR patients also have high levels of circulating thyroid hormones (T3-T4), with normal or slightly elevated thyroid stimulating hormone (TSH).

Defects in THRB are the cause of selective pituitary thyroid hormone resistance (PRTN) [MIM:145650]; also known as familial hyperthyroidism due to inappropriate thyrotropin secretion. PRTN is a variant form of thyroid hormone resistance and is characterized by clinical hyperthyroidism, with elevated free thyroid hormones, but inappropriately normal serum TSH. Unlike GTHR, where the syndrome usually segregates with a dominant allele, the mode of inheritance in PRTN has not been established.

### Sequence similarities

Belongs to the nuclear hormone receptor family. NR1 subfamily.  
Contains 1 nuclear receptor DNA-binding domain.

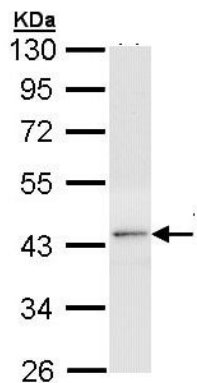
### Domain

Composed of three domains: a modulating N-terminal domain, a DNA-binding domain and a C-terminal ligand-binding domain.

### Cellular localization

Nucleus.

## Images

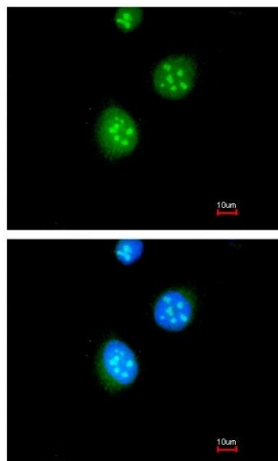


Anti-Thyroid Hormone Receptor beta antibody (ab155297) at  
1/1000 dilution + HepG2 whole cell lysate at 30 µg

**Predicted band size:** 53 kDa

10% SDS PAGE

Western blot - Anti-Thyroid Hormone Receptor beta  
antibody (ab155297)



Immunofluorescence analysis of paraformaldehyde fixed HeLa cells  
labeling Thyroid Hormone Receptor beta using ab155297 at 1/200.  
Lower image shows co-staining with a DNA probe.

Immunocytochemistry/ Immunofluorescence - Anti-  
Thyroid Hormone Receptor beta antibody (ab155297)

**Please note:** All products are "FOR RESEARCH USE ONLY. NOT FOR USE IN DIAGNOSTIC PROCEDURES"

### Our Abpromise to you: Quality guaranteed and expert technical support

- Replacement or refund for products not performing as stated on the datasheet
- Valid for 12 months from date of delivery
- Response to your inquiry within 24 hours
- We provide support in Chinese, English, French, German, Japanese and Spanish
- Extensive multi-media technical resources to help you
- We investigate all quality concerns to ensure our products perform to the highest standards

If the product does not perform as described on this datasheet, we will offer a refund or replacement. For full details of the Abpromise, please visit <https://www.abcam.com/abpromise> or contact our technical team.

## Terms and conditions

---

- Guarantee only valid for products bought direct from Abcam or one of our authorized distributors