




Product datasheet

Anti-TIL/TLR1 antibody ab189337

★☆☆☆☆ [3 Abreviews](#) [2 References](#) [3 Images](#)

Overview

Product name	Anti-TIL/TLR1 antibody
Description	Rabbit polyclonal to TIL/TLR1
Host species	Rabbit
Tested applications	Suitable for: WB, IHC-P, Flow Cyt
Species reactivity	Reacts with: Mouse, Human Predicted to work with: Rat 
Immunogen	Synthetic peptide within Human TIL/TLR1 aa 400-500 conjugated to keyhole limpet haemocyanin. The exact immunogen sequence used to generate this antibody is proprietary information. If additional detail on the immunogen is needed to determine the suitability of the antibody for your needs, please contact our Scientific Support team to discuss your requirements. Database link: Q15399 <div>  Run BLAST with  Run BLAST with </div>
Positive control	Human small intestine tissue; Human PBMCs; Ramos and Raw cell lysates.
General notes	<p>The Life Science industry has been in the grips of a reproducibility crisis for a number of years. Abcam is leading the way in addressing this with our range of recombinant monoclonal antibodies and knockout edited cell lines for gold-standard validation. Please check that this product meets your needs before purchasing.</p> <p>If you have any questions, special requirements or concerns, please send us an inquiry and/or contact our Support team ahead of purchase. Recommended alternatives for this product can be found below, along with publications, customer reviews and Q&As</p>

Properties

Form	Liquid
Storage instructions	Shipped at 4°C. Store at +4°C short term (1-2 weeks). Upon delivery aliquot. Store at -20°C long term. Avoid freeze / thaw cycle.
Storage buffer	Preservative: 0.05% Sodium azide Constituents: 99% PBS, 0.05% BSA
Purity	Protein G purified
Clonality	Polyclonal
Isotype	IgG

Applications

The Abpromise guarantee

Our **Abpromise guarantee** covers the use of ab189337 in the following tested applications.

The application notes include recommended starting dilutions; optimal dilutions/concentrations should be determined by the end user.

Application	Abreviews	Notes
WB	★ ★ ★ ★ ★ (2)	Use a concentration of 1 - 3 µg/ml. Predicted molecular weight: 90 kDa.
IHC-P	★ ★ ★ ★ ★ (1)	Use a concentration of 10 µg/ml. Perform heat mediated antigen retrieval before commencing with IHC staining protocol.
Flow Cyt		Use 0.5µg for 10 ⁶ cells. ab171870 - Rabbit polyclonal IgG, is suitable for use as an isotype control with this antibody.

Target

Function

Participates in the innate immune response to microbial agents. Cooperates with TLR2 to mediate the innate immune response to bacterial lipoproteins or lipopeptides. Acts via MYD88 and TRAF6, leading to NF-kappa-B activation, cytokine secretion and the inflammatory response.

Tissue specificity

Ubiquitous. Highly expressed in spleen, ovary, peripheral blood leukocytes, thymus and small intestine.

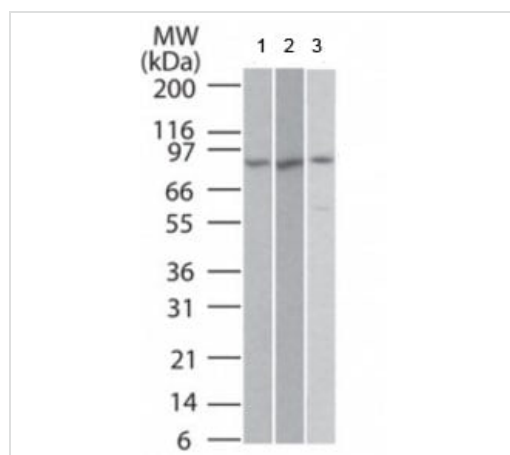
Sequence similarities

Belongs to the Toll-like receptor family.
Contains 12 LRR (leucine-rich) repeats.
Contains 1 LRRCT domain.
Contains 1 TIR domain.

Cellular localization

Cell membrane. Cytoplasmic vesicle > phagosome membrane.

Images



Western blot - Anti-TIL/TLR1 antibody (ab189337)

All lanes : Anti-TIL/TLR1 antibody (ab189337) at 2 µg/ml

Lane 1 : Ramos cell lysate

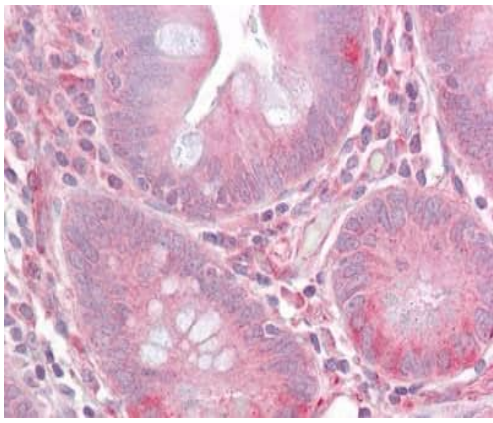
Lane 2 : Raw cell lysate

Lane 3 : TIL/TLR1 transfected HEK293 cell lysate

Secondary

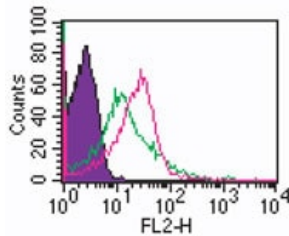
All lanes : Goat anti-rabbit HRP

Predicted band size: 90 kDa



Immunohistochemical analysis of formalin-fixed, paraffin-embedded Human small intestine tissue labeling TIL/TLR1 with ab189337 at 10 µg/ml.

Immunohistochemistry (Formalin/PFA-fixed paraffin-embedded sections) - Anti-TIL/TLR1 antibody (ab189337)



Flow cytometric analysis of Human PBMCs (monocyte-gated) labeling TIL/TLR1 with ab189337 at 0.5 µg/10⁶ cells. Shaded histogram represents cells without antibody, green represents isotype control, red represents ab189337. Goat anti-rabbit PE secondary antibody was used.

Flow Cytometry - Anti-TIL/TLR1 antibody (ab189337)

Please note: All products are "FOR RESEARCH USE ONLY. NOT FOR USE IN DIAGNOSTIC PROCEDURES"

Our Abpromise to you: Quality guaranteed and expert technical support

- Replacement or refund for products not performing as stated on the datasheet
- Valid for 12 months from date of delivery
- Response to your inquiry within 24 hours
- We provide support in Chinese, English, French, German, Japanese and Spanish
- Extensive multi-media technical resources to help you
- We investigate all quality concerns to ensure our products perform to the highest standards

If the product does not perform as described on this datasheet, we will offer a refund or replacement. For full details of the Abpromise, please visit <https://www.abcam.com/abpromise> or contact our technical team.

Terms and conditions

- Guarantee only valid for products bought direct from Abcam or one of our authorized distributors