

### Anti-TIM 1 antibody [mAbcam75295] ab75295

1 Image

#### Overview

<b>Product name</b>	Anti-TIM 1 antibody [mAbcam75295]
<b>Description</b>	Mouse monoclonal [mAbcam75295] to TIM 1
<b>Host species</b>	Mouse
<b>Tested applications</b>	<b>Suitable for:</b> WB
<b>Species reactivity</b>	<b>Reacts with:</b> Human
<b>Immunogen</b>	Synthetic peptide corresponding to Human TIM 1 aa 300 to the C-terminus (C terminal). (Peptide available as <a href="#">ab97979</a> )
<b>Positive control</b>	This antibody gave a positive signal in the human testis and brain tissue lysates.
<b>General notes</b>	<p>This antibody clone is manufactured by Abcam. If you require a custom buffer formulation or conjugation for your experiments, please contact <a href="mailto:orders@abcam.com">orders@abcam.com</a>.</p> <p>The Life Science industry has been in the grips of a reproducibility crisis for a number of years. Abcam is leading the way in addressing this with our range of recombinant monoclonal antibodies and knockout edited cell lines for gold-standard validation. Please check that this product meets your needs before purchasing.</p> <p>If you have any questions, special requirements or concerns, please send us an inquiry and/or contact our Support team ahead of purchase. Recommended alternatives for this product can be found below, along with publications, customer reviews and Q&amp;As</p>

#### Properties

<b>Form</b>	Liquid
<b>Storage instructions</b>	Shipped at 4°C. Store at +4°C short term (1-2 weeks). Upon delivery aliquot. Store at -20°C long term. Avoid freeze / thaw cycle. Store In the Dark.
<b>Storage buffer</b>	pH: 7.40 Preservative: 0.02% Sodium azide Constituent: 1% BSA
<b>Purity</b>	Protein G purified
<b>Clonality</b>	Monoclonal
<b>Clone number</b>	mAbcam75295
<b>Myeloma</b>	Sp2/0-Ag14

Isotype

IgG

## Applications

### The Abpromise guarantee

Our **Abpromise guarantee** covers the use of ab75295 in the following tested applications.

The application notes include recommended starting dilutions; optimal dilutions/concentrations should be determined by the end user.

Application	Abreviews	Notes
WB		Use a concentration of 10 µg/ml. Detects a band of approximately 50 kDa (predicted molecular weight: 39 kDa).

## Target

### Function

May play a role in T-helper cell development and the regulation of asthma and allergic diseases. Receptor for TIMD4 (By similarity). In case of human hepatitis A virus (HHAV) infection, functions as a cell-surface receptor for the virus. May play a role in kidney injury and repair.

### Tissue specificity

Widely expressed, with highest levels in kidney and testis. Expressed by activated CD4+ T-cells during the development of helper T-cells responses.

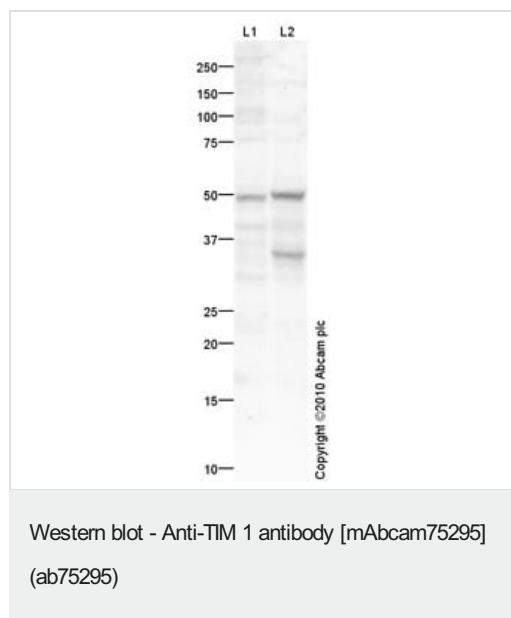
### Sequence similarities

Belongs to the immunoglobulin superfamily. TIM family.  
Contains 1 Ig-like V-type (immunoglobulin-like) domain.

### Cellular localization

Membrane.

## Images



**All lanes :** Anti-TIM 1 antibody [mAbcam75295] (ab75295) at 10 µg/ml

**Lane 1 :** Human testis tissue lysate - total protein ([ab30257](#))

**Lane 2 :** Human brain tissue lysate - total protein ([ab29466](#))

Lysates/proteins at 20 µg per lane.

### Secondary

**All lanes :** Goat polyclonal to Mouse IgG - H&L - Pre-Adsorbed (HRP) at 1/3000 dilution

Developed using the ECL technique.

Performed under reducing conditions.

**Predicted band size:** 39 kDa

**Observed band size:** 50 kDa

**Additional bands at:** 35 kDa. We are unsure as to the identity of

these extra bands.

**Exposure time:** 90 seconds

The band at approximately 50-kDa is comparable to the molecular weight seen with other antibodies to TIM 1. TIM 1 contains a number of potential glycosylation sites (SwissProt), which may explain its migration at a higher molecular weight than predicted.

**Please note:** All products are "FOR RESEARCH USE ONLY. NOT FOR USE IN DIAGNOSTIC PROCEDURES"

### **Our Abpromise to you: Quality guaranteed and expert technical support**

---

- Replacement or refund for products not performing as stated on the datasheet
- Valid for 12 months from date of delivery
- Response to your inquiry within 24 hours
- We provide support in Chinese, English, French, German, Japanese and Spanish
- Extensive multi-media technical resources to help you
- We investigate all quality concerns to ensure our products perform to the highest standards

If the product does not perform as described on this datasheet, we will offer a refund or replacement. For full details of the Abpromise, please visit <https://www.abcam.com/abpromise> or contact our technical team.

### **Terms and conditions**

---

- Guarantee only valid for products bought direct from Abcam or one of our authorized distributors