



## Product datasheet

### Anti-TIM44 antibody ab244466

[1 References](#) [9 Images](#)

#### Overview

<b>Product name</b>	Anti-TIM44 antibody
<b>Description</b>	Rabbit polyclonal to TIM44
<b>Host species</b>	Rabbit
<b>Tested applications</b>	<b>Suitable for:</b> WB, ICC/IF, IHC-P
<b>Species reactivity</b>	<b>Reacts with:</b> Mouse, Rat, Human
<b>Immunogen</b>	Recombinant fragment corresponding to Human TIM44 aa 100-250. Database link: <a href="#">O43615</a>  <a href="#">Run BLAST with</a>  <a href="#">Run BLAST with</a>
<b>Positive control</b>	IHC-P: Human cerebral cortex, heart, gastrointestinal and testis tissue. WB: PC-3 and NBT-II cell lysate ICC/IF: A431 cells.
<b>General notes</b>	<p>The Life Science industry has been in the grips of a reproducibility crisis for a number of years. Abcam is leading the way in addressing this with our range of recombinant monoclonal antibodies and knockout edited cell lines for gold-standard validation. Please check that this product meets your needs before purchasing.</p> <p>If you have any questions, special requirements or concerns, please send us an inquiry and/or contact our Support team ahead of purchase. Recommended alternatives for this product can be found below, along with publications, customer reviews and Q&amp;As</p>

#### Properties

<b>Form</b>	Liquid
<b>Storage instructions</b>	Shipped at 4°C. Store at +4°C short term (1-2 weeks). Upon delivery aliquot. Store at -20°C long term. Avoid freeze / thaw cycle.
<b>Storage buffer</b>	pH: 7.20 Preservative: 0.02% Sodium azide Constituents: PBS, 40% Glycerol (glycerin, glycerine)
<b>Purity</b>	Immunogen affinity purified
<b>Clonality</b>	Polyclonal
<b>Isotype</b>	IgG

## Applications

### The Abpromise guarantee

Our **Abpromise guarantee** covers the use of ab244466 in the following tested applications.

The application notes include recommended starting dilutions; optimal dilutions/concentrations should be determined by the end user.

Application	Abreviews	Notes
WB		Use a concentration of 0.04 - 0.4 µg/ml.
ICC/IF		Use a concentration of 0.25 - 2 µg/ml. Fixation/Permeabilization: PFA/Triton X-100.
IHC-P		1/200 - 1/500. Perform heat mediated antigen retrieval with citrate buffer pH 6 before commencing with IHC staining protocol.

## Target

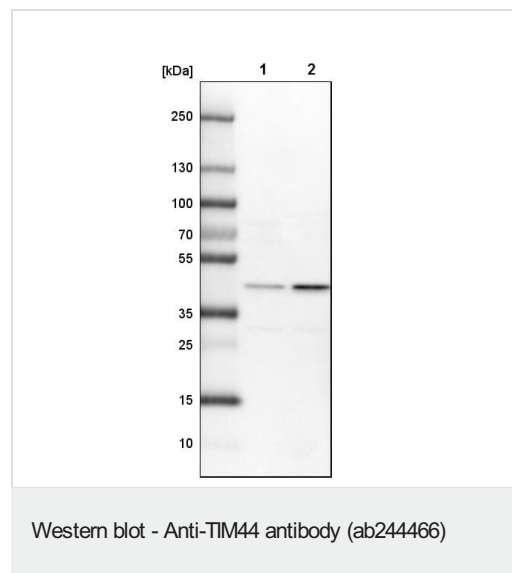
### Relevance

TIM44 is the essential component of the PAM complex, a complex required for the translocation of transit peptide-containing proteins from the inner membrane into the mitochondrial matrix in an ATP-dependent manner. It recruits mitochondrial HSP70 to drive protein translocation into the matrix using ATP as an energy source.

### Cellular localization

Mitochondrion inner membrane.

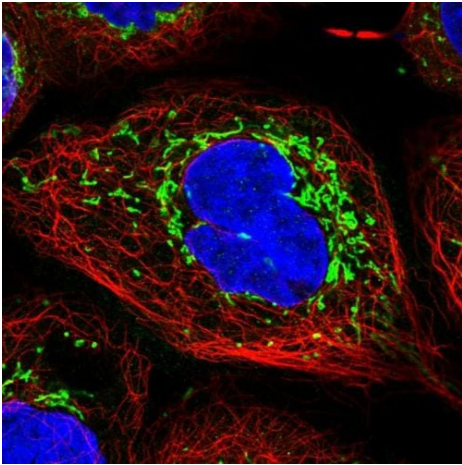
## Images



**All lanes :** Anti-TIM44 antibody (ab244466) at 0.4 µg/ml

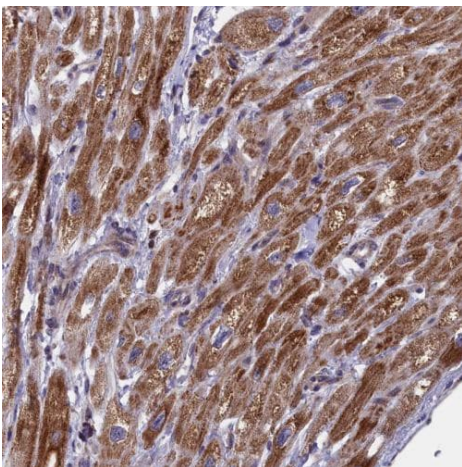
**Lane 1 :** NIH/3T3 (mouse embryo fibroblast cell line) whole cell lysate

**Lane 2 :** NBT-II whole cell lysate



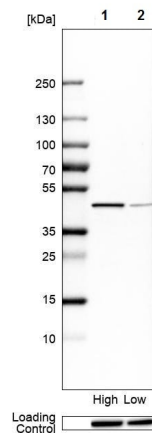
Immunocytochemistry/ Immunofluorescence - Anti-TIM44 antibody (ab244466)

PFA-fixed, Triton X-100 permeabilized A431 (human epidermoid carcinoma cell line) cells stained for TIM44 (green) using ab244466 at 4 µg/ml in ICC/IF.



Immunohistochemistry (Formalin/PFA-fixed paraffin-embedded sections) - Anti-TIM44 antibody (ab244466)

Paraffin-embedded human heart muscle tissue stained for TIM44 using ab244466 at 1/200 dilution in immunohistochemical analysis.

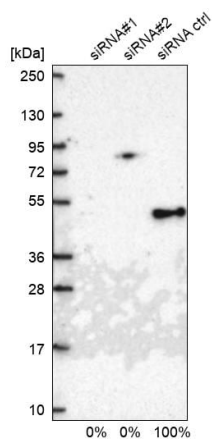


Western blot - Anti-TIM44 antibody (ab244466)

**All lanes :** Anti-TIM44 antibody (ab244466) at 0.4  $\mu$ g/ml

**Lane 1 :** PC-3 (human prostate adenocarcinoma cell line) whole cell lysate

**Lane 2 :** HeLa (human epithelial cell line from cervix adenocarcinoma) whole cell lysate



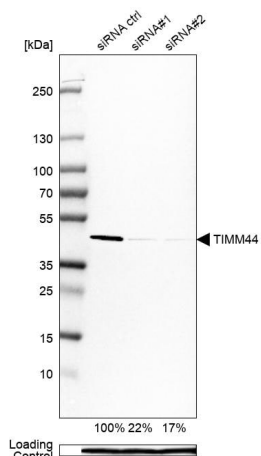
Western blot - Anti-TIM44 antibody (ab244466)

**All lanes :** Anti-TIM44 antibody (ab244466) at 0.4  $\mu$ g/ml

**Lane 1 :** U-2 OS (human bone osteosarcoma epithelial cell line) cells transfected with siRNA probe#1

**Lane 2 :** U-2 OS cells transfected with siRNA probe#2

**Lane 3 :** U-2 OS cells transfected with siRNA control



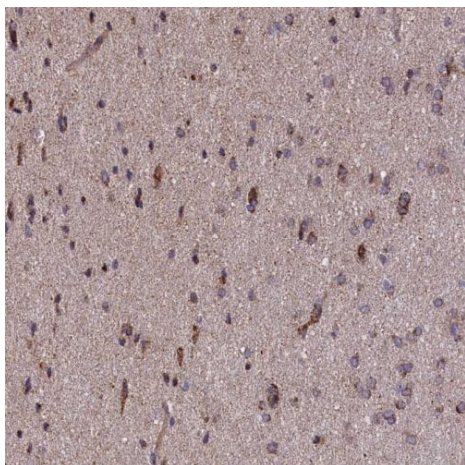
Western blot - Anti-TIM44 antibody (ab244466)

**All lanes :** Anti-TIM44 antibody (ab244466) at 0.4 µg/ml

**Lane 1 :** Caco-2 (Human colorectal adenocarcinoma cell line) cells transfected with a siRNA control

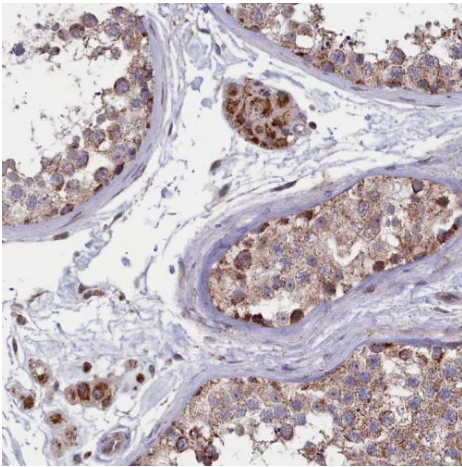
**Lane 2 :** Caco-2 cells transfected with a siRNA control

**Lane 3 :** Caco-2 cells transfected with a siRNA probe#2



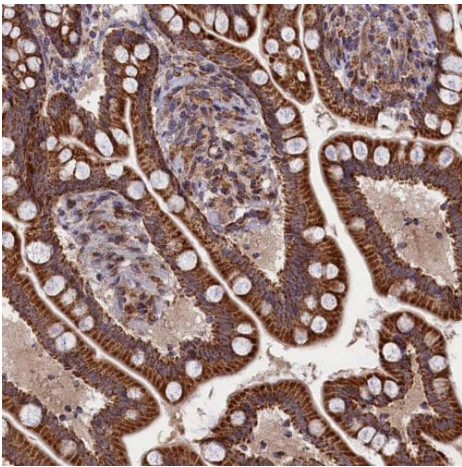
Immunohistochemistry (Formalin/PFA-fixed paraffin-embedded sections) - Anti-TIM44 antibody (ab244466)

Paraffin-embedded human cerebral cortex tissue stained for TIM44 using ab244466 at 1/200 dilution in immunohistochemical analysis.



Paraffin-embedded human testis tissue stained for TIM44 using ab244466 at 1/200 dilution in immunohistochemical analysis.

Immunohistochemistry (Formalin/PFA-fixed paraffin-embedded sections) - Anti-TIM44 antibody (ab244466)



Paraffin-embedded human gastrointestinal tissue stained for TIM44 using ab244466 at 1/200 dilution in immunohistochemical analysis.

Immunohistochemistry (Formalin/PFA-fixed paraffin-embedded sections) - Anti-TIM44 antibody (ab244466)

**Please note:** All products are "FOR RESEARCH USE ONLY. NOT FOR USE IN DIAGNOSTIC PROCEDURES"

### Our Abpromise to you: Quality guaranteed and expert technical support

- Replacement or refund for products not performing as stated on the datasheet
- Valid for 12 months from date of delivery
- Response to your inquiry within 24 hours

- We provide support in Chinese, English, French, German, Japanese and Spanish
- Extensive multi-media technical resources to help you
- We investigate all quality concerns to ensure our products perform to the highest standards

If the product does not perform as described on this datasheet, we will offer a refund or replacement. For full details of the Abpromise, please visit <https://www.abcam.com/abpromise> or contact our technical team.

#### **Terms and conditions**

---

- Guarantee only valid for products bought direct from Abcam or one of our authorized distributors