




Product datasheet

Anti-TIM50 antibody ab23938

★★★★☆ [4 Abreviews](#) [9 References](#) [1 Image](#)

Overview

Product name	Anti-TIM50 antibody
Description	Goat polyclonal to TIM50
Host species	Goat
Tested applications	Suitable for: WB
Species reactivity	Reacts with: Human Predicted to work with: Mouse, Rat, Cow, Dog 
Immunogen	Synthetic peptide corresponding to Human TIM50 aa 293-306. Sequence: (C)DVRTVLEHYALEDD  Run BLAST with  Run BLAST with
Positive control	WB: human heart tissue lysate.
General notes	<p>The Life Science industry has been in the grips of a reproducibility crisis for a number of years. Abcam is leading the way in addressing this with our range of recombinant monoclonal antibodies and knockout edited cell lines for gold-standard validation. Please check that this product meets your needs before purchasing.</p> <p>If you have any questions, special requirements or concerns, please send us an inquiry and/or contact our Support team ahead of purchase. Recommended alternatives for this product can be found below, along with publications, customer reviews and Q&As</p>

Properties

Form	Liquid
Storage instructions	Shipped at 4°C. Upon delivery aliquot and store at -20°C. Avoid freeze / thaw cycles.
Storage buffer	pH: 7.30 Preservative: 0.02% Sodium azide Constituents: Tris buffered saline, 0.5% BSA
Purity	Immunogen affinity purified
Purification notes	Purified by ammonium sulphate precipitation followed by antigen affinity chromatography using the immunizing peptide.
Clonality	Polyclonal

Isotype

IgG

Applications

The Abpromise guarantee

Our **Abpromise guarantee** covers the use of ab23938 in the following tested applications.

The application notes include recommended starting dilutions; optimal dilutions/concentrations should be determined by the end user.

Application	Abreviews	Notes
WB	★★★★★ (3)	Use a concentration of 0.5 - 1.5 µg/ml. Detects a band of approximately 40 kDa. 1 hour primary incubation is recommended for this product.

Target

Function

Essential component of the TIM23 complex, a complex that mediates the translocation of transit peptide-containing proteins across the mitochondrial inner membrane. Has some phosphatase activity in vitro; however such activity may not be relevant in vivo. Isoform 2 may participate in the release of snRNPs and SMN from the Cajal body.

Tissue specificity

Widely expressed. Expressed at higher level in brain, kidney and liver (at protein level).

Sequence similarities

Belongs to the TIM50 family.
Contains 1 FCP1 homology domain.

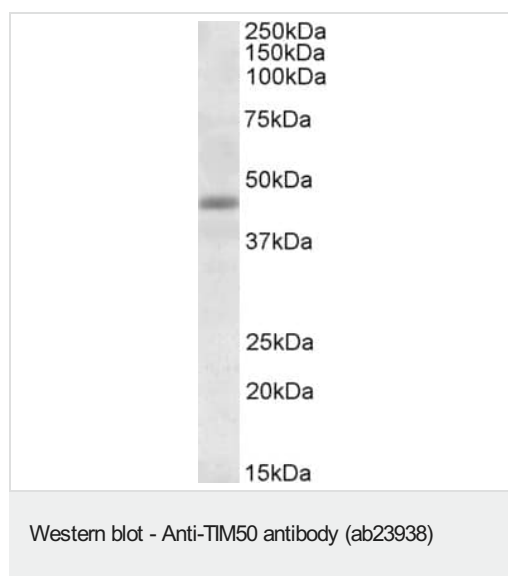
Domain

The FCP1 homology domain does not contain the canonical D-x-D-x-[TV] active site, suggesting that it probably does not display phosphatase activity in vivo.

Cellular localization

Mitochondrion inner membrane and Nucleus speckle. Nuclear and enriched in speckles with snRNPs.

Images



Anti-TIM50 antibody (ab23938) at 1 µg/ml + Human heart tissue lysate at 35 µg

Our Abpromise to you: Quality guaranteed and expert technical support

- Replacement or refund for products not performing as stated on the datasheet
- Valid for 12 months from date of delivery
- Response to your inquiry within 24 hours

- We provide support in Chinese, English, French, German, Japanese and Spanish
- Extensive multi-media technical resources to help you
- We investigate all quality concerns to ensure our products perform to the highest standards

If the product does not perform as described on this datasheet, we will offer a refund or replacement. For full details of the Abpromise, please visit <https://www.abcam.com/abpromise> or contact our technical team.

Terms and conditions

- Guarantee only valid for products bought direct from Abcam or one of our authorized distributors