


Product datasheet

Anti-TIM50 antibody [EPR5785] ab109436

Recombinant RabMAb

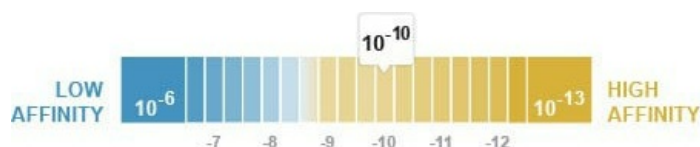
★★★★★ [2 Abreviews](#) [5 References](#) [3 Images](#)

Overview

Product name	Anti-TIM50 antibody [EPR5785]
Description	Rabbit monoclonal [EPR5785] to TIM50
Host species	Rabbit
Tested applications	Suitable for: WB Unsuitable for: Flow Cyt, ICC/IF or IHC-P
Species reactivity	Reacts with: Human Predicted to work with: Mouse, Rat 
Immunogen	Synthetic peptide. This information is proprietary to Abcam and/or its suppliers.
Positive control	293T, SH-SY5Y, HepG2, and HeLa whole cell lysate (ab150035)
General notes	<p>This product is a recombinant monoclonal antibody, which offers several advantages including:</p> <ul style="list-style-type: none"> - High batch-to-batch consistency and reproducibility - Improved sensitivity and specificity - Long-term security of supply - Animal-free production <p>For more information see here.</p> <p>Our RabMAb[®] technology is a patented hybridoma-based technology for making rabbit monoclonal antibodies. For details on our patents, please refer to RabMAb[®] patents.</p>

Properties

Form	Liquid
Storage instructions	Shipped at 4°C. Upon delivery aliquot and store at -20°C. Avoid freeze / thaw cycles.
Dissociation constant (K _D)	K _D = 1.56 x 10 ⁻¹⁰ M



[Learn more about K_D](#)

Storage buffer	pH: 7.20
----------------	----------

	Preservative: 0.05% Sodium azide Constituents: 0.1% BSA, 40% Glycerol (glycerin, glycerine), 9.85% Tris glycine, 50% Tissue culture supernatant
Purity	Protein A purified
Clonality	Monoclonal
Clone number	EPR5785
Isotype	IgG

Applications

The Abpromise guarantee Our **Abpromise guarantee** covers the use of ab109436 in the following tested applications. The application notes include recommended starting dilutions; optimal dilutions/concentrations should be determined by the end user.

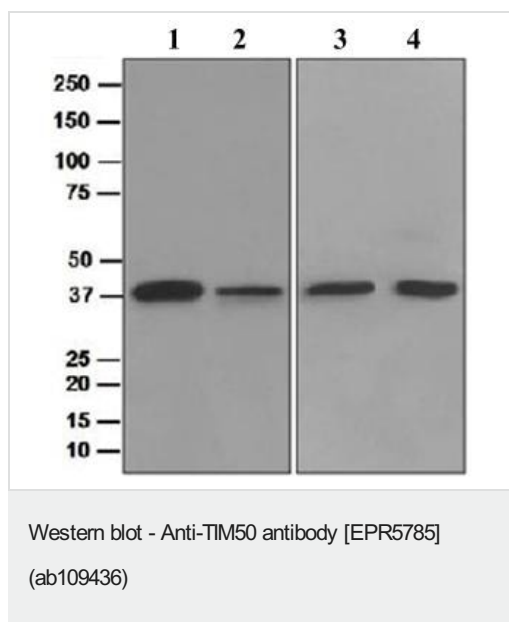
Application	Abreviews	Notes
WB	★★★★★ (1)	1/1000 - 1/10000. Predicted molecular weight: 40 kDa.

Application notes Is unsuitable for Flow Cyt, ICC/IF or IHC-P.

Target

Function	Essential component of the TIM23 complex, a complex that mediates the translocation of transit peptide-containing proteins across the mitochondrial inner membrane. Has some phosphatase activity in vitro; however such activity may not be relevant in vivo. Isoform 2 may participate in the release of snRNPs and SMN from the Cajal body.
Tissue specificity	Widely expressed. Expressed at higher level in brain, kidney and liver (at protein level).
Sequence similarities	Belongs to the TIM50 family. Contains 1 FCP1 homology domain.
Domain	The FCP1 homology domain does not contain the canonical D-x-D-x-[TV] active site, suggesting that it probably does not display phosphatase activity in vivo.
Cellular localization	Mitochondrion inner membrane and Nucleus speckle. Nuclear and enriched in speckles with snRNPs.

Images



All lanes : Anti-TIM50 antibody [EPR5785] (ab109436) at 1/1000 dilution

Lane 1 : HEK-293T (Human epithelial cell line from embryonic kidney transformed with large T antigen) whole cell lysate

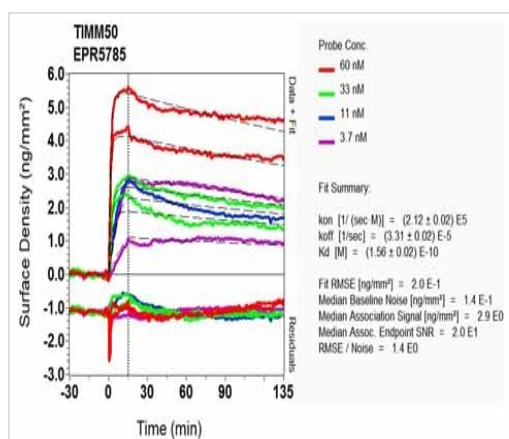
Lane 2 : SH-SY5Y (Human neuroblastoma cell line from bone marrow) whole cell lysate

Lane 3 : Hep G2 (Human liver hepatocellular carcinoma cell line) whole cell lysate

Lane 4 : HeLa (Human cervix adenocarcinoma epithelial cell) whole cell lysate

Lysates/proteins at 10 µg per lane.

Predicted band size: 40 kDa



Equilibrium dissociation constant (K_D)

Learn more about K_D

[Click here to learn more about \$K_D\$](#)

Why choose a recombinant antibody?



Research with confidence
Consistent and reproducible results



Long-term and scalable supply
Recombinant technology



Success from the first experiment
Confirmed specificity



Ethical standards compliant
Animal-free production

Anti-TIM50 antibody [EPR5785] (ab109436)

Please note: All products are "FOR RESEARCH USE ONLY. NOT FOR USE IN DIAGNOSTIC PROCEDURES"

Our Abpromise to you: Quality guaranteed and expert technical support

- Replacement or refund for products not performing as stated on the datasheet
- Valid for 12 months from date of delivery
- Response to your inquiry within 24 hours
- We provide support in Chinese, English, French, German, Japanese and Spanish
- Extensive multi-media technical resources to help you
- We investigate all quality concerns to ensure our products perform to the highest standards

If the product does not perform as described on this datasheet, we will offer a refund or replacement. For full details of the Abpromise, please visit <https://www.abcam.com/abpromise> or contact our technical team.

Terms and conditions

- Guarantee only valid for products bought direct from Abcam or one of our authorized distributors