

## Product datasheet

### Anti-TIMM17A/TIM17 antibody [EPR16098] ab192246

Recombinant RabMAb

★★★★☆ [5 Abreviews](#) [2 References](#) [5 Images](#)

#### Overview

<b>Product name</b>	Anti-TIMM17A/TIM17 antibody [EPR16098]
<b>Description</b>	Rabbit monoclonal [EPR16098] to TIMM17A/TIM17
<b>Host species</b>	Rabbit
<b>Tested applications</b>	<b>Suitable for:</b> ICC/IF, IP, WB
<b>Species reactivity</b>	<b>Reacts with:</b> Mouse, Rat, Human
<b>Immunogen</b>	Synthetic peptide. This information is proprietary to Abcam and/or its suppliers.
<b>Positive control</b>	HeLa, K562, Raw264.7, PC-12 and NIH/3T3 cell lysates; HeLa cells.
<b>General notes</b>	<p>This product is a recombinant monoclonal antibody, which offers several advantages including:</p> <ul style="list-style-type: none"> <li>- High batch-to-batch consistency and reproducibility</li> <li>- Improved sensitivity and specificity</li> <li>- Long-term security of supply</li> <li>- Animal-free production</li> </ul> <p>For more information <a href="#">see here</a>.</p> <p>Our RabMAb<sup>®</sup> technology is a patented hybridoma-based technology for making rabbit monoclonal antibodies. For details on our patents, please refer to <a href="#">RabMAb<sup>®</sup> patents</a>.</p>

#### Properties

<b>Form</b>	Liquid
<b>Storage instructions</b>	Shipped at 4°C. Store at +4°C short term (1-2 weeks). Upon delivery aliquot. Store at -20°C long term. Avoid freeze / thaw cycle.
<b>Storage buffer</b>	<p>pH: 7.2</p> <p>Preservative: 0.01% Sodium azide</p> <p>Constituents: 59% PBS, 0.05% BSA, 40% Glycerol (glycerin, glycerine)</p>
<b>Purity</b>	Protein A purified
<b>Clonality</b>	Monoclonal
<b>Clone number</b>	EPR16098
<b>Isotype</b>	IgG

## Applications

### The Abpromise guarantee

Our **Abpromise guarantee** covers the use of ab192246 in the following tested applications.

The application notes include recommended starting dilutions; optimal dilutions/concentrations should be determined by the end user.

Application	Abreviews	Notes
ICC/IF		1/50.
IP		1/40.
WB	★★★★☆ (4)	1/1000. Detects a band of approximately 17 kDa (predicted molecular weight: 18 kDa).

## Target

### Function

Essential component of the TIM23 complex, a complex that mediates the translocation of transit peptide-containing proteins across the mitochondrial inner membrane.

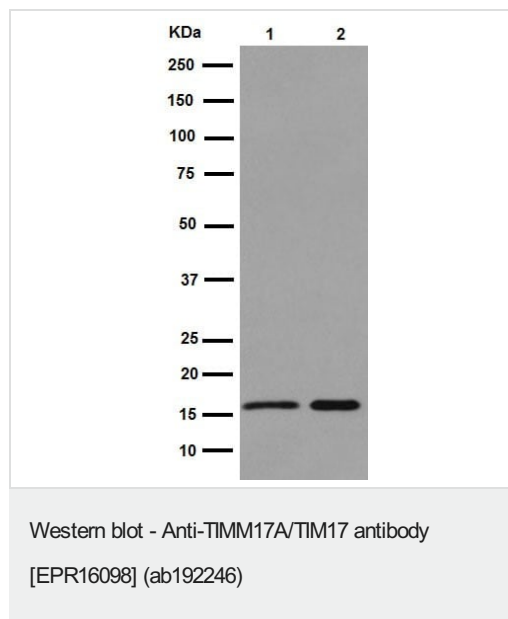
### Sequence similarities

Belongs to the Tim17/Tim22/Tim23 family.

### Cellular localization

Mitochondrion inner membrane.

## Images



**All lanes :** Anti-TIMM17A/TIM17 antibody [EPR16098] (ab192246)  
at 1/1000 dilution

**Lane 1 :** HeLa cell lysate

**Lane 2 :** K562 cell lysate

Lysates/proteins at 20 µg per lane.

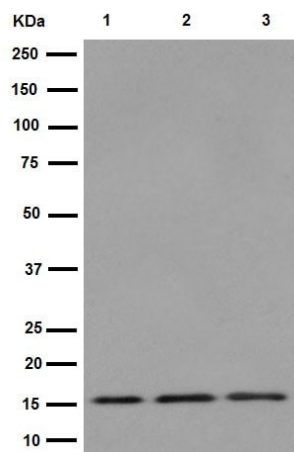
### Secondary

**All lanes :** Goat Anti-Rabbit IgG, (H+L), Peroxidase conjugated at  
1/1000 dilution

**Predicted band size:** 18 kDa

**Observed band size:** 17 kDa

Blocking/Dilution buffer: 5% NFDM /TBST.



Western blot - Anti-TIMM17A/TIM17 antibody [EPR16098] (ab192246)

**All lanes :** Anti-TIMM17A/TIM17 antibody [EPR16098] (ab192246) at 1/1000 dilution

**Lane 1 :** RAW 264.7 cell lysate

**Lane 2 :** PC-12 cell lysate

**Lane 3 :** NIH/3T3 cell lysate

Lysates/proteins at 10 µg per lane.

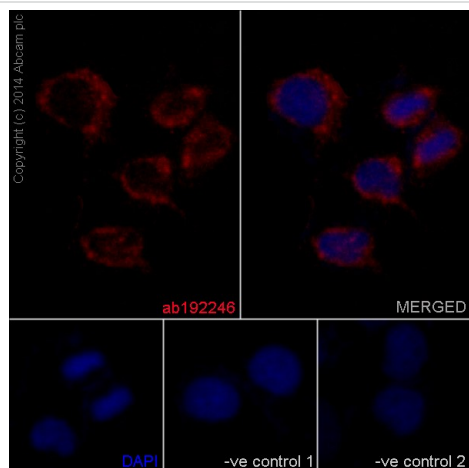
#### Secondary

**All lanes :** Goat Anti-Rabbit IgG, (H+L), Peroxidase conjugated at 1/1000 dilution

**Predicted band size:** 18 kDa

**Observed band size:** 17 kDa

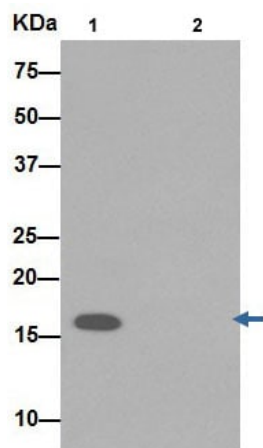
Blocking/Dilution buffer: 5% NFDM /TBST.



Immunocytochemistry/ Immunofluorescence - Anti-TIMM17A/TIM17 antibody [EPR16098] (ab192246)

Immunofluorescent analysis of 4% paraformaldehyde-fixed, 0.1% tritonX-100 permeabilized HeLa cells labeling TIMM17A/TIM17 with ab192246 at 1/50 dilution (11.7 µg/ml), followed by Goat anti rabbit IgG (Alexa Fluor® 555) secondary antibody (**ab150078**) at 1/500 dilution. Nuclear counter stain Dapi (blue).

The two negative controls are ab192246 at 1/50 dilution followed by (Goat anti mouse IgG (Alexa Fluor®488) secondary antibody at 1/200 dilution.



Western blot analysis of TIMM17A/TIM17 in HeLa cell lysates immunoprecipitated using ab192246 at 1/40 dilution (Lane 1). Lane 2: PBS instead of HeLa lysate.

Secondary antibody: Anti-Rabbit IgG (HRP), specific to the non-reduced form of IgG at 1/1500 dilution.

Blocking/Dilution buffer: 5% NFD /TBST.

Immunoprecipitation - Anti-TIMM17A/TIM17 antibody [EPR16098] (ab192246)

Why choose a recombinant antibody?



**Research with confidence**  
Consistent and reproducible results



**Long-term and scalable supply**  
Recombinant technology



**Success from the first experiment**  
Confirmed specificity



**Ethical standards compliant**  
Animal-free production

Anti-TIMM17A/TIM17 antibody [EPR16098] (ab192246)

**Please note:** All products are "FOR RESEARCH USE ONLY. NOT FOR USE IN DIAGNOSTIC PROCEDURES"

### Our Abpromise to you: Quality guaranteed and expert technical support

- Replacement or refund for products not performing as stated on the datasheet
- Valid for 12 months from date of delivery
- Response to your inquiry within 24 hours

- We provide support in Chinese, English, French, German, Japanese and Spanish
- Extensive multi-media technical resources to help you
- We investigate all quality concerns to ensure our products perform to the highest standards

If the product does not perform as described on this datasheet, we will offer a refund or replacement. For full details of the Abpromise, please visit <https://www.abcam.com/abpromise> or contact our technical team.

#### **Terms and conditions**

---

- Guarantee only valid for products bought direct from Abcam or one of our authorized distributors