




Product datasheet

Anti-TIMM23/TIM23 antibody ab230253

★★★★☆ [4 Abreviews](#) [8 References](#) [3 Images](#)

Overview

Product name	Anti-TIMM23/TIM23 antibody
Description	Rabbit polyclonal to TIMM23/TIM23
Host species	Rabbit
Tested applications	Suitable for: IHC-P, WB
Species reactivity	Reacts with: Mouse, Human Predicted to work with: Rat, Cow, Orangutan 
Immunogen	Recombinant full length protein corresponding to Human TIMM23/TIM23 aa 1 to the C-terminus. Database link: O14925  Run BLAST with  Run BLAST with
Positive control	WB: Mouse heart and liver tissue lysates; A431, MCF7 and Jurkat whole cell lysate (ab7899). IHC-P: Human testis tissue and ovarian cancer tissue.
General notes	<p>The Life Science industry has been in the grips of a reproducibility crisis for a number of years. Abcam is leading the way in addressing this with our range of recombinant monoclonal antibodies and knockout edited cell lines for gold-standard validation. Please check that this product meets your needs before purchasing.</p> <p>If you have any questions, special requirements or concerns, please send us an inquiry and/or contact our Support team ahead of purchase. Recommended alternatives for this product can be found below, along with publications, customer reviews and Q&As</p>

Properties

Form	Liquid
Storage instructions	Shipped at 4°C. Store at +4°C short term (1-2 weeks). Upon delivery aliquot. Store at -20°C long term. Avoid freeze / thaw cycle.
Storage buffer	pH: 7.30 Preservative: 0.02% Sodium azide Constituents: PBS, 50% Glycerol
Purity	Immunogen affinity purified
Clonality	Polyclonal
Isotype	IgG

Applications

The Abpromise guarantee

Our **Abpromise guarantee** covers the use of ab230253 in the following tested applications.

The application notes include recommended starting dilutions; optimal dilutions/concentrations should be determined by the end user.

Application	Abreviews	Notes
IHC-P		1/20 - 1/200.
WB	★★★★★ (1)	1/1000 - 1/5000. Detects a band of approximately 22 kDa (predicted molecular weight: 22 kDa).

Target

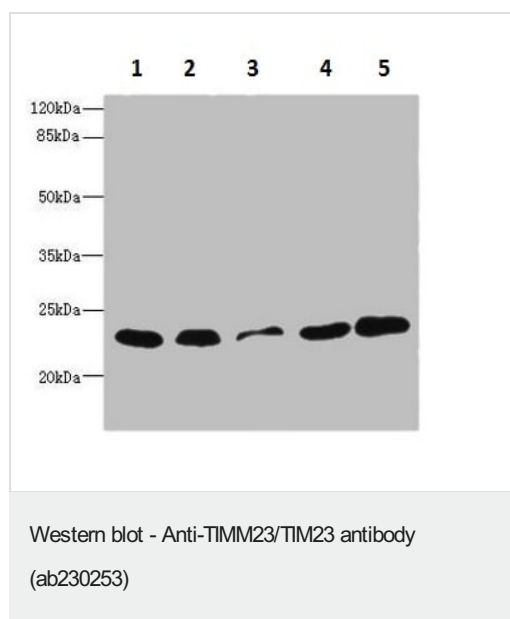
Relevance

TIMM23 belongs to the Tim17/Tim22/Tim23 family and is an essential component of the TIM23 complex, a complex that mediates the translocation of transit peptide-containing proteins across the mitochondrial inner membrane.

Cellular localization

Mitochondrion inner membrane; Multi-pass membrane protein.

Images



All lanes : Anti-TIMM23/TIM23 antibody (ab230253) at 1/1000 dilution

Lane 1 : Mouse heart tissue lysate

Lane 2 : Mouse liver tissue lysate

Lane 3 : A431 (human epidermoid carcinoma cell line) whole cell lysate

Lane 4 : MCF7 (human breast adenocarcinoma cell line) whole cell lysate

Lane 5 : Jurkat (human T cell leukemia cell line from peripheral blood) whole cell lysate

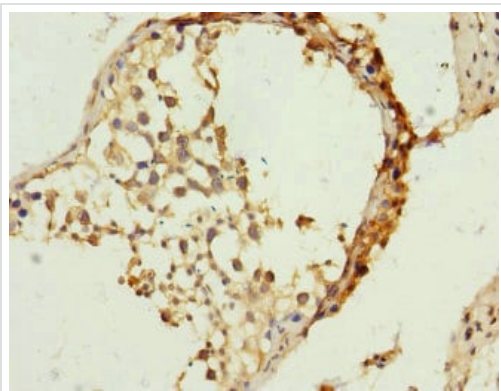
Secondary

All lanes : Goat polyclonal to rabbit IgG at 1/10000 dilution

Developed using the ECL technique.

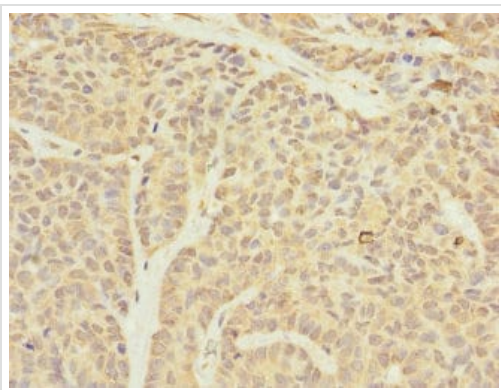
Predicted band size: 22 kDa

Observed band size: 22 kDa



Immunohistochemistry (Formalin/PFA-fixed paraffin-embedded sections) - Anti-TIMM23/TIM23 antibody (ab230253)

Paraffin-embedded human testis tissue stained for TIMM23/TIM23 with ab230253 at 1/100 dilution in immunohistochemical analysis.



Immunohistochemistry (Formalin/PFA-fixed paraffin-embedded sections) - Anti-TIMM23/TIM23 antibody (ab230253)

Paraffin-embedded human ovarian cancer tissue stained for TIMM23/TIM23 with ab230253 at 1/100 dilution in immunohistochemical analysis.

Please note: All products are "FOR RESEARCH USE ONLY. NOT FOR USE IN DIAGNOSTIC PROCEDURES"

Our Abpromise to you: Quality guaranteed and expert technical support

- Replacement or refund for products not performing as stated on the datasheet
- Valid for 12 months from date of delivery
- Response to your inquiry within 24 hours

- We provide support in Chinese, English, French, German, Japanese and Spanish
- Extensive multi-media technical resources to help you
- We investigate all quality concerns to ensure our products perform to the highest standards

If the product does not perform as described on this datasheet, we will offer a refund or replacement. For full details of the Abpromise, please visit <https://www.abcam.com/abpromise> or contact our technical team.

Terms and conditions

- Guarantee only valid for products bought direct from Abcam or one of our authorized distributors