

Product datasheet

Anti-Tin2 antibody [EPR15319] ab197894

Recombinant RabMAb

[8 References](#) [4 Images](#)

Overview

Product name	Anti-Tin2 antibody [EPR15319]
Description	Rabbit monoclonal [EPR15319] to Tin2
Host species	Rabbit
Tested applications	Suitable for: WB
Species reactivity	Reacts with: Mouse, Rat, Human
Immunogen	Recombinant fragment. This information is proprietary to Abcam and/or its suppliers.
Positive control	MCF7, WI38 and HUVEC cell lysate. Mouse brain, heart, kidney and spleen lysate. C6, RAW264.7, PC12 and NIH3T3 cell lysate. Human, mouse and rat thymus lysate.
General notes	<p>This product is a recombinant monoclonal antibody, which offers several advantages including:</p> <ul style="list-style-type: none">- High batch-to-batch consistency and reproducibility- Improved sensitivity and specificity- Long-term security of supply- Animal-free production <p>For more information see here.</p> <p>Our RabMAb[®] technology is a patented hybridoma-based technology for making rabbit monoclonal antibodies. For details on our patents, please refer to RabMAb[®] patents.</p>

Properties

Form	Liquid
Storage instructions	Shipped at 4°C. Store at +4°C short term (1-2 weeks). Upon delivery aliquot. Store at -20°C long term. Avoid freeze / thaw cycle.
Storage buffer	pH: 7.20 Preservative: 0.01% Sodium azide Constituents: 40% Glycerol (glycerin, glycerine), 59% PBS, 0.05% BSA
Purity	Protein A purified
Clonality	Monoclonal
Clone number	EPR15319
Isotype	IgG

Applications

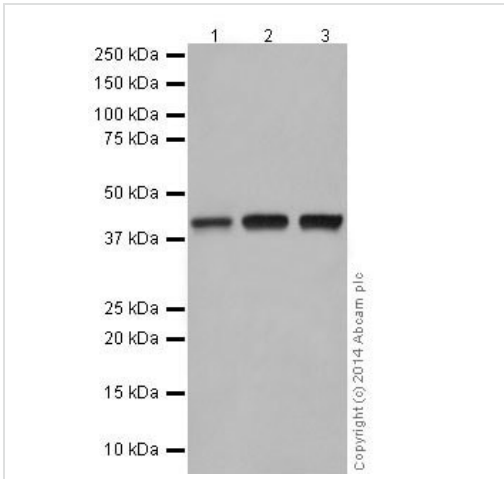
The Abpromise guarantee Our **Abpromise guarantee** covers the use of ab197894 in the following tested applications. The application notes include recommended starting dilutions; optimal dilutions/concentrations should be determined by the end user.

Application	Abreviews	Notes
WB		1/1000. Detects a band of approximately 39 kDa (predicted molecular weight: 50 kDa).

Target

Function	Component of the shelterin complex (telosome) that is involved in the regulation of telomere length and protection. Shelterin associates with arrays of double-stranded TTAGGG repeats added by telomerase and protects chromosome ends; without its protective activity, telomeres are no longer hidden from the DNA damage surveillance and chromosome ends are inappropriately processed by DNA repair pathways. Plays a role in shelterin complex assembly.
Tissue specificity	Detected in heart, brain, placenta, lung, liver, skeletal muscle, kidney and pancreas.
Involvement in disease	Defects in TINF2 are a cause of dyskeratosis congenita autosomal dominant (ADDKC) [MIM:127550]; also known as dyskeratosis congenita Scoggins type. ADDKC is a rare, progressive bone marrow failure syndrome characterized by the triad of reticulated skin hyperpigmentation, nail dystrophy, and mucosal leukoplakia. Early mortality is often associated with bone marrow failure, infections, fatal pulmonary complications, or malignancy. Defects in TINF2 are a cause of retinopathy exudative with bone marrow failure (ERBMF) [MIM:268130]; also known as Revesz syndrome. ERBMF is characterized by bilateral exudative retinopathy, bone marrow hypoplasia, nail dystrophy, fine hair, cerebellar hypoplasia, and growth retardation.
Domain	The TBM domain mediates interaction with TERF1.
Cellular localization	Nucleus. Chromosome > telomere. Associated with telomeres.

Images



Western blot - Anti-Tin2 antibody [EPR15319]
(ab197894)

All lanes : Anti-Tin2 antibody [EPR15319] (ab197894) at 1/10000 dilution

Lane 1 : MCF7 (Human breast adenocarcinoma cell line) whole cell lysate

Lane 2 : WI38 (Human fetal lung fibroblast cells) whole cell lysate

Lane 3 : HUVEC (Human umbilical vein endothelial cell line) whole cell lysate

Lysates/proteins at 20 µg per lane.

Secondary

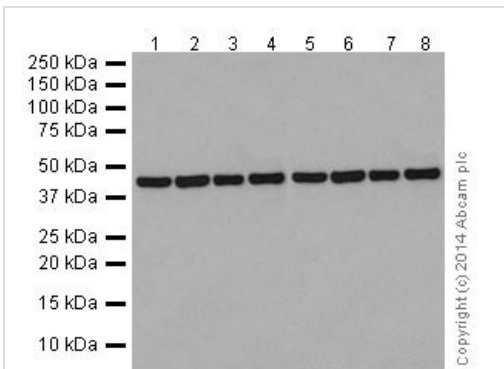
All lanes : Goat Anti-Rabbit IgG, (H+L), Peroxidase conjugated at 1/1000 dilution

Predicted band size: 50 kDa

Observed band size: 39 kDa

Exposure time: 1 minute

5% NFDm/TBST: Blocking and diluting buffer.



Western blot - Anti-Tin2 antibody [EPR15319]
(ab197894)

All lanes : Anti-Tin2 antibody [EPR15319] (ab197894) at 1/1000 dilution

Lane 1 : Mouse brain lysate

Lane 2 : Mouse heart lysate

Lane 3 : Mouse kidney lysate

Lane 4 : Mouse spleen lysate

Lane 5 : C6 (Rat glial tumor cells) whole cell lysate

Lane 6 : RAW264.7 (Mouse macrophage cells transformed with Abelson murine leukemia virus) whole cell lysate

Lane 7 : PC12 (Rat adrenal gland pheochromocytoma) whole cell lysate

Lane 8 : NIH3T3 (Mouse embryo fibroblast cells) whole cell lysate

Lysates/proteins at 10 µg per lane.

Secondary

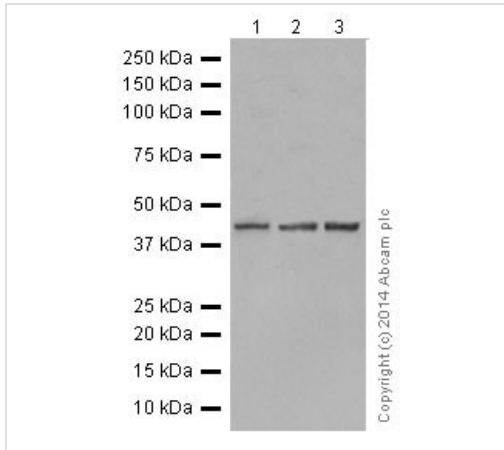
All lanes : Goat Anti-Rabbit IgG, (H+L), Peroxidase conjugated at 1/1000 dilution

Predicted band size: 50 kDa

Observed band size: 38 kDa

Exposure time: 30 seconds

5% NFDM/TBST: Blocking and diluting buffer.



Western blot - Anti-Tin2 antibody [EPR15319]
(ab197894)

All lanes : Anti-Tin2 antibody [EPR15319] (ab197894) at 1/2000 dilution

Lane 1 : Human thymus lysate

Lane 2 : Mouse thymus lysate

Lane 3 : Rat thymus lysate

Lysates/proteins at 10 µg per lane.

Secondary

All lanes : Goat Anti-Rabbit IgG, (H+L), Peroxidase conjugated at 1/1000 dilution

Predicted band size: 50 kDa

Observed band size: 38 kDa

Exposure time: 1 minute

5% NFDM/TBST: Blocking and diluting buffer.

Why choose a recombinant antibody?

 <p>Research with confidence Consistent and reproducible results</p>	 <p>Long-term and scalable supply Recombinant technology</p>
 <p>Success from the first experiment Confirmed specificity</p>	 <p>Ethical standards compliant Animal-free production</p>

Anti-Tin2 antibody [EPR15319] (ab197894)

Please note: All products are "FOR RESEARCH USE ONLY. NOT FOR USE IN DIAGNOSTIC PROCEDURES"

Our Abpromise to you: Quality guaranteed and expert technical support

- Replacement or refund for products not performing as stated on the datasheet
- Valid for 12 months from date of delivery
- Response to your inquiry within 24 hours

- We provide support in Chinese, English, French, German, Japanese and Spanish
- Extensive multi-media technical resources to help you
- We investigate all quality concerns to ensure our products perform to the highest standards

If the product does not perform as described on this datasheet, we will offer a refund or replacement. For full details of the Abpromise, please visit <https://www.abcam.com/abpromise> or contact our technical team.

Terms and conditions

- Guarantee only valid for products bought direct from Abcam or one of our authorized distributors