

## Product datasheet

### Anti-TIP-1 antibody [EPR7900(2)] ab155992

Recombinant RabMAb

★★★★★ **2 Abreviews** [4 Images](#)

#### Overview

<b>Product name</b>	Anti-TIP-1 antibody [EPR7900(2)]
<b>Description</b>	Rabbit monoclonal [EPR7900(2)] to TIP-1
<b>Host species</b>	Rabbit
<b>Specificity</b>	The mouse and rat recommendation is based on the WB results. We do not guarantee IHC-P for mouse and rat.
<b>Tested applications</b>	<b>Suitable for:</b> Flow Cyt (Intra), WB, IHC-P <b>Unsuitable for:</b> ICC/IF
<b>Species reactivity</b>	<b>Reacts with:</b> Mouse, Rat, Human
<b>Immunogen</b>	Synthetic peptide within Human TIP-1 aa 1-100. The exact sequence is proprietary. Database link: <a href="#">O14907</a>
<b>Positive control</b>	WB: Mouse lung and heart tissue lysates. Rat lung and heart tissue lysate. NIH/3T3, A673, LLC1, and C6 whole cell lysates; IHC-P: Human thyroid carcinoma tissue; Flow-cyt: A673 cells.
<b>General notes</b>	This product is a recombinant monoclonal antibody, which offers several advantages including: <ul style="list-style-type: none"> <li>- High batch-to-batch consistency and reproducibility</li> <li>- Improved sensitivity and specificity</li> <li>- Long-term security of supply</li> <li>- Animal-free production</li> </ul> For more information <a href="#">see here</a> . Our RabMAb <sup>®</sup> technology is a patented hybridoma-based technology for making rabbit monoclonal antibodies. For details on our patents, please refer to <a href="#">RabMAb<sup>®</sup> patents</a> .

#### Properties

<b>Form</b>	Liquid
<b>Storage instructions</b>	Shipped at 4°C. Store at +4°C short term (1-2 weeks). Upon delivery aliquot. Store at -20°C long term. Avoid freeze / thaw cycle.
<b>Storage buffer</b>	Preservative: 0.01% Sodium azide Constituents: 59% PBS, 40% Glycerol (glycerin, glycerine), 0.05% BSA
<b>Purity</b>	Protein A purified
<b>Clonality</b>	Monoclonal

Clone number	EPR7900(2)
Isotype	IgG

## Applications

**The Abpromise guarantee** Our **Abpromise guarantee** covers the use of ab155992 in the following tested applications. The application notes include recommended starting dilutions; optimal dilutions/concentrations should be determined by the end user.

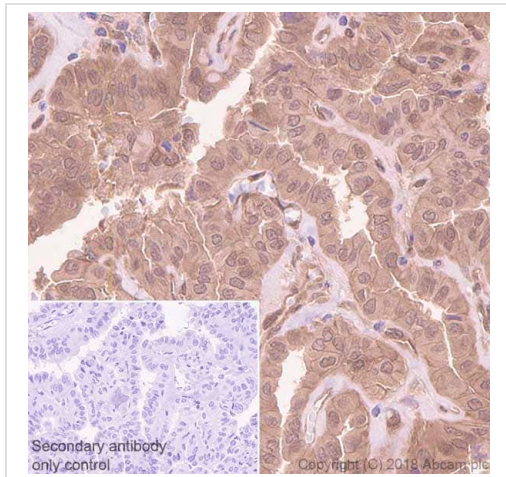
Application	Abreviews	Notes
Flow Cyt (Intra)		1/200. For unpurified use at 1/100 - 1/250. <b>ab172730</b> - Rabbit monoclonal IgG, is suitable for use as an isotype control with this antibody.
WB	★★★★★ (1)	1/1000. Predicted molecular weight: 14 kDa. <b>For unpurified use at 1/1000 - 1/10000.</b>
IHC-P		1/1000. Perform heat mediated antigen retrieval before commencing with IHC staining protocol. See <b>IHC antigen retrieval protocols</b> . <b>For unpurified use at 1/50 - 1/100.</b>  The mouse and rat recommendation is based on the WB results. We do not guarantee IHC-P for mouse and rat.

**Application notes** Is unsuitable for ICC/IF.

## Target

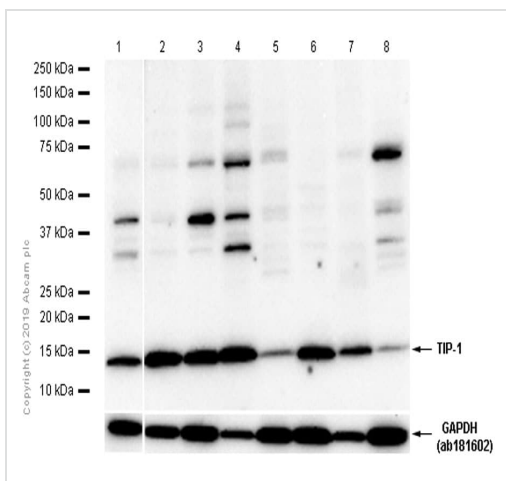
<b>Function</b>	May play a role in the Rho signaling pathway. May act as an inhibitor of the Wnt signaling pathway. May play a role in activation of CDC42 by the viral protein HPV16 E6.
<b>Tissue specificity</b>	Detected in various cell lines including HeLa. Weakly expressed in peripheral blood leukocytes.
<b>Sequence similarities</b>	Contains 1 PDZ (DHR) domain.
<b>Cellular localization</b>	Cytoplasm. Nucleus.

## Images



Immunohistochemistry (Formalin/PFA-fixed paraffin-embedded sections) - Anti-TIP-1 antibody [EPR7900(2)] (ab155992)

Immunohistochemistry (Formalin/PFA-fixed paraffin-embedded sections) analysis of human thyroid carcinoma tissue sections labeling TIP-1 with purified ab155992 at 1/1000 dilution (2.05 µg/mL). Perform heat mediated antigen retrieval using **ab93684** (Tris/EDTA buffer, pH 9.0). ImmunoHistoProbe one step HRP Polymer (ready to use) was used as the secondary antibody. Negative control: PBS instead of the primary antibody. Hematoxylin was used as a counterstain.



Western blot - Anti-TIP-1 antibody [EPR7900(2)] (ab155992)

**All lanes** : Anti-TIP-1 antibody [EPR7900(2)] (ab155992) at 1/1000 dilution (Purified)

**Lane 1** : A-673 (Human muscle Ewing's Sarcoma) whole cell lysate

**Lane 2** : NIH/3T3 (Mouse embryonic fibroblast) whole cell lysate

**Lane 3** : LLC1 (Musculus lung rounded-loosely attached or floating) whole cell lysate

**Lane 4** : Mouse lung lysate

**Lane 5** : Mouse heart lysate

**Lane 6** : C6 (Rat glial tumor glial cell) whole cell lysate

**Lane 7** : Rat lung lysate

**Lane 8** : Rat heart tissue lysate

Lysates/proteins at 20 µg per lane.

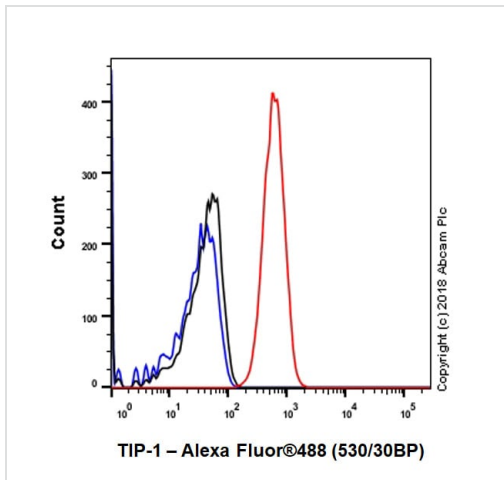
### Secondary

**All lanes** : Goat Anti-Rabbit IgG H&L (HRP) (**ab97051**) at 1/20000 dilution

**Predicted band size:** 14 kDa

**Observed band size:** 14 kDa





Blocking/Diluting buffer: 5% NFDM/TBST



Intracellular Flow Cytometry analysis of A-673 (Human muscle Ewing's Sarcoma) cells labeling TIP-1 with purified ab155992 at 1/200 dilution (10µg/mL) (Red). Cells were fixed with 4% Paraformaldehyde and permeabilised with 90% Methanol. A Goat anti rabbit IgG (Alexa Fluor® 488, [ab150077](#)) secondary antibody was used at 1/2000. Isotype control - Rabbit monoclonal IgG (Black). Unlabeled control - Cell without incubation with primary antibody and secondary antibody (Blue).

Flow Cytometry (Intracellular) - Anti-TIP-1 antibody  
[EPR7900(2)] (ab155992)

Why choose a recombinant antibody?

 <p><b>Research with confidence</b> Consistent and reproducible results</p>	 <p><b>Long-term and scalable supply</b> Recombinant technology</p>
 <p><b>Success from the first experiment</b> Confirmed specificity</p>	 <p><b>Ethical standards compliant</b> Animal-free production</p>

Anti-TIP-1 antibody [EPR7900(2)] (ab155992)

**Please note:** All products are "FOR RESEARCH USE ONLY. NOT FOR USE IN DIAGNOSTIC PROCEDURES"

### Our Abpromise to you: Quality guaranteed and expert technical support

- Replacement or refund for products not performing as stated on the datasheet
- Valid for 12 months from date of delivery
- Response to your inquiry within 24 hours
- We provide support in Chinese, English, French, German, Japanese and Spanish

- Extensive multi-media technical resources to help you
- We investigate all quality concerns to ensure our products perform to the highest standards

If the product does not perform as described on this datasheet, we will offer a refund or replacement. For full details of the Abpromise, please visit <https://www.abcam.com/abpromise> or contact our technical team.

#### **Terms and conditions**

---

- Guarantee only valid for products bought direct from Abcam or one of our authorized distributors