

Product datasheet

Anti-TIP30 antibody [EPR13179] α b177961

Recombinant RabMAb

[4 References](#) [7 Images](#)

Overview

Product name	Anti-TIP30 antibody [EPR13179]
Description	Rabbit monoclonal [EPR13179] to TIP30
Host species	Rabbit
Tested applications	Suitable for: Flow Cyt (Intra), IP, IHC-P, WB, ICC/IF
Species reactivity	Reacts with: Mouse, Rat, Human
Immunogen	Synthetic peptide within Human TIP30 aa 50-150 (Cysteine residue). The exact sequence is proprietary. Database link: Q9BUP3
Positive control	HeLa, A431, and fetal liver lysates; Human pancreas and placenta tissues; A431 cells; HeLa cells.
General notes	This product is a recombinant monoclonal antibody, which offers several advantages including: <ul style="list-style-type: none"> - High batch-to-batch consistency and reproducibility - Improved sensitivity and specificity - Long-term security of supply - Animal-free production For more information see here . Our RabMAb [®] technology is a patented hybridoma-based technology for making rabbit monoclonal antibodies. For details on our patents, please refer to RabMAb[®] patents .

Properties

Form	Liquid
Storage instructions	Shipped at 4°C. Store at +4°C short term (1-2 weeks). Upon delivery aliquot. Store at -20°C long term. Avoid freeze / thaw cycle.
Storage buffer	pH: 7.20 Preservative: 0.01% Sodium azide Constituents: 59% PBS, 40% Glycerol (glycerin, glycerine), 0.5% BSA
Purity	Protein A purified
Clonality	Monoclonal
Clone number	EPR13179

Isotype

IgG

Applications

The Abpromise guarantee

Our **Abpromise guarantee** covers the use of ab177961 in the following tested applications.

The application notes include recommended starting dilutions; optimal dilutions/concentrations should be determined by the end user.

Application	Abreviews	Notes
Flow Cyt (Intra)		1/10 - 1/100. ab172730 - Rabbit monoclonal IgG, is suitable for use as an isotype control with this antibody.
IP		1/10 - 1/100.
IHC-P		1/50 - 1/100. Perform heat mediated antigen retrieval via the pressure cooker method before commencing with IHC staining protocol.
WB		1/1000 - 1/10000. Predicted molecular weight: 27 kDa.
ICC/IF		1/50 - 1/100.

Target

Function

Oxidoreductase required for tumor suppression. NADPH-bound form inhibits nuclear import by competing with nuclear import substrates for binding to a subset of nuclear transport receptors. May act as a redox sensor linked to transcription through regulation of nuclear import. Isoform 1 is a metastasis suppressor with proapoptotic as well as antiangiogenic properties. Isoform 2 has an antiapoptotic effect.

Tissue specificity

Ubiquitous. Highest level in liver. High levels in lung, skeletal muscle, pancreas and placenta. Moderate levels in heart and kidney. Low levels in brain. Not expressed or low levels in variant small cell lung carcinomas, 33% of hepatocellular carcinomas and neuroblastomas.

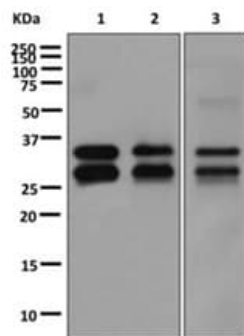
Domain

Unique C-terminus confers high proteasome-dependent instability to isoform 2.

Cellular localization

Cytoplasm. Nucleus envelope.

Images



Western blot - Anti-TIP30 antibody [EPR13179]
(ab177961)

All lanes : Anti-TIP30 antibody [EPR13179] (ab177961) at 1/1000 dilution

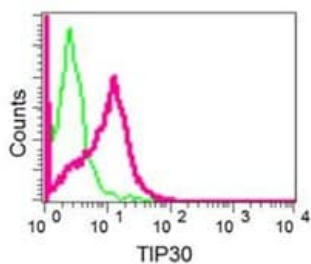
Lane 1 : HeLa cell lysate

Lane 2 : A431 cell lysate

Lane 3 : Fetal liver lysate

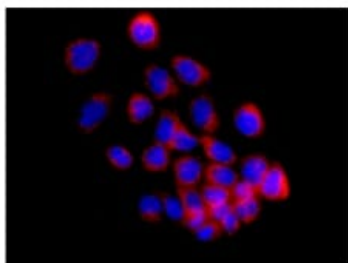
Lysates/proteins at 10 µg per lane.

Predicted band size: 27 kDa



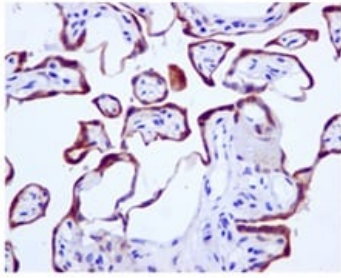
Flow Cytometry (Intracellular) - Anti-TIP30 antibody
[EPR13179] (ab177961)

Intracellular flow cytometric analysis of permeabilized HeLa cells labeling TIP30 using ab177961 at 1/10 dilution (red) or a rabbit IgG (negative) (green).



Immunocytochemistry/ Immunofluorescence - Anti-TIP30 antibody [EPR13179] (ab177961)

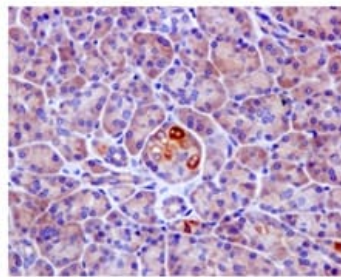
Immunofluorescence analysis of A431 cells labeling TIP30 using ab177961 at 1/50 dilution.



Immunohistochemistry (Formalin/PFA-fixed paraffin-embedded sections) - Anti-TIP30 antibody [EPR13179] (ab177961)

Immunohistochemical analysis of Human placenta tissue labeling TIP30 using ab177961 at 1/50 dilution.

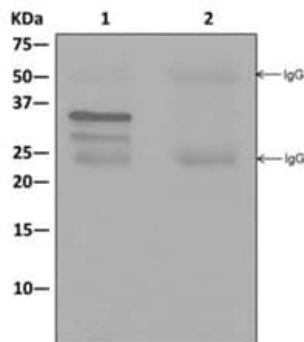
Perform heat mediated antigen retrieval via the pressure cooker method before commencing with IHC staining protocol.



Immunohistochemistry (Formalin/PFA-fixed paraffin-embedded sections) - Anti-TIP30 antibody [EPR13179] (ab177961)

Immunohistochemical analysis of Human pancreas tissue labeling TIP30 using ab177961 at 1/50 dilution.

Perform heat mediated antigen retrieval via the pressure cooker method before commencing with IHC staining protocol.



Immunoprecipitation - Anti-TIP30 antibody [EPR13179] (ab177961)

Western blot analysis on immunoprecipitation pellet from (1) HeLa cell lysate or (2) 1XPBS (negative control) using ab177961 at 1/10 dilution to immunoprecipitate TIP30, and HRP-conjugated anti-rabbit IgG preferentially detecting the non-reduced form of rabbit IgG.

Why choose a recombinant antibody?



Research with confidence
Consistent and reproducible results



Long-term and scalable supply
Recombinant technology



Success from the first experiment
Confirmed specificity



Ethical standards compliant
Animal-free production

Anti-TIP30 antibody [EPR13179] (ab177961)

Please note: All products are "FOR RESEARCH USE ONLY. NOT FOR USE IN DIAGNOSTIC PROCEDURES"

Our Abpromise to you: Quality guaranteed and expert technical support

- Replacement or refund for products not performing as stated on the datasheet
- Valid for 12 months from date of delivery
- Response to your inquiry within 24 hours
- We provide support in Chinese, English, French, German, Japanese and Spanish
- Extensive multi-media technical resources to help you
- We investigate all quality concerns to ensure our products perform to the highest standards

If the product does not perform as described on this datasheet, we will offer a refund or replacement. For full details of the Abpromise, please visit <https://www.abcam.com/abpromise> or contact our technical team.

Terms and conditions

- Guarantee only valid for products bought direct from Abcam or one of our authorized distributors