

### Anti-Tissue kallikrein antibody ab28289

[4 References](#) [2 Images](#)

#### Overview

<b>Product name</b>	Anti-Tissue kallikrein antibody
<b>Description</b>	Rabbit polyclonal to Tissue kallikrein
<b>Host species</b>	Rabbit
<b>Specificity</b>	ab28289 recognises the Kallikrein loop of Tissue kallikrein. It does not react with the other human Kallikreins.
<b>Tested applications</b>	<b>Suitable for:</b> WB, IHC-P
<b>Species reactivity</b>	<b>Reacts with:</b> Human
<b>Immunogen</b>	Synthetic peptide corresponding to Human Tissue kallikrein. Corresponding to the the Kallikrein loop area of Tissue kallikrein. (Peptide available as <a href="#">ab41419</a> )
<b>General notes</b>	<p>The Life Science industry has been in the grips of a reproducibility crisis for a number of years. Abcam is leading the way in addressing this with our range of recombinant monoclonal antibodies and knockout edited cell lines for gold-standard validation. Please check that this product meets your needs before purchasing.</p> <p>If you have any questions, special requirements or concerns, please send us an inquiry and/or contact our Support team ahead of purchase. Recommended alternatives for this product can be found below, along with publications, customer reviews and Q&amp;As</p>

#### Properties

<b>Form</b>	Liquid
<b>Storage instructions</b>	Shipped at 4°C. Store at +4°C short term (1-2 weeks). Upon delivery aliquot. Store at -20°C long term.
<b>Storage buffer</b>	Preservative: 0.05% Sodium azide Constituent: 50% Glycerol
<b>Purity</b>	Immunogen affinity purified
<b>Clonality</b>	Polyclonal
<b>Isotype</b>	IgG

#### Applications

## The Abpromise guarantee

Our **Abpromise guarantee** covers the use of ab28289 in the following tested applications.

The application notes include recommended starting dilutions; optimal dilutions/concentrations should be determined by the end user.

Application	Abreviews	Notes
WB		1/1000 - 1/5000. Predicted molecular weight: 28 kDa.
IHC-P		Use a concentration of 1 µg/ml. Perform heat mediated antigen retrieval with Tris/EDTA buffer pH 9.0 before commencing with IHC staining protocol.

## Target

### Function

Glandular kallikreins cleave Met-Lys and Arg-Ser bonds in kininogen to release Lys-bradykinin.

### Tissue specificity

Isoform 2 is expressed in pancreas, salivary glands, kidney, colon, prostate gland, testis, spleen and the colon adenocarcinoma cell line T84.

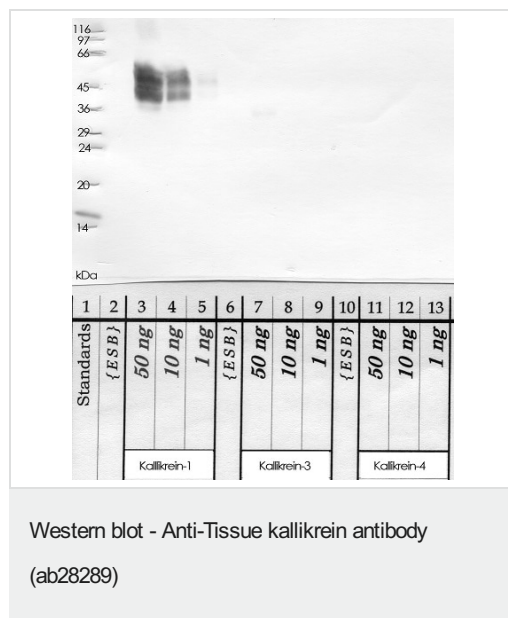
### Sequence similarities

Belongs to the peptidase S1 family. Kallikrein subfamily.  
Contains 1 peptidase S1 domain.

### Post-translational modifications

The O-linked polysaccharides on Ser-93, Ser-104 and Ser-167 are probably the mucin type linked to GalNAc. In PubMed:3163150, GalNAc was detected with the corresponding peptides but not located.

## Images



**All lanes :** Anti-Tissue kallikrein antibody (ab28289) at 1/1000 dilution

**Lane 3 :** Kallikrein-1 (rhK-1) at 0.05 µg

**Lane 4 :** Kallikrein-1 (rhK-1) at 0.01 µg

**Lane 5 :** Kallikrein-1 (rhK-1) at 0.001 µg

**Lane 7 :** Kallikrein-3 (rhK-3) at 0.05 µg

**Lane 8 :** Kallikrein-3 (rhK-3) at 0.01 µg

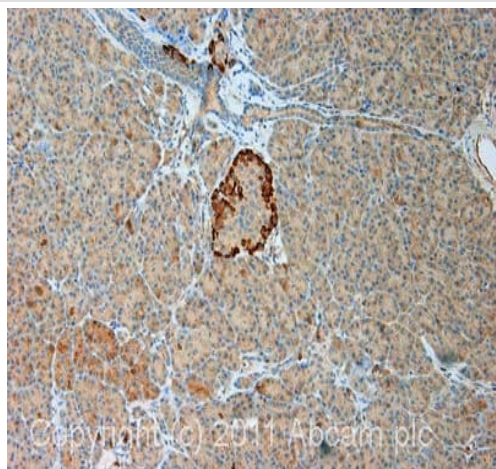
**Lane 9 :** Kallikrein-3 (rhK-3) at 0.001 µg

**Lane 11 :** Kallikrein-4 (rhK-4) at 0.05 µg

**Lane 12 :** Kallikrein-4 (rhK-4) at 0.01 µg

**Lane 13 :** Kallikrein-4 (rhK-4) at 0.001 µg

**Predicted band size:** 28 kDa



Immunohistochemistry (Formalin/PFA-fixed paraffin-embedded sections) - Anti-Tissue kallikrein antibody (ab28289)

IHC image of ab28289 staining in human normal pancreas formalin fixed paraffin embedded tissue section, performed on a Leica Bond™ system using the standard protocol F. The section was pre-treated using heat mediated antigen retrieval with EDTA (pH9, epitope retrieval solution 2) for 20 mins. The section was then incubated with ab28289, 1 µg/ml, for 15 mins at room temperature and detected using an HRP conjugated compact polymer system. DAB was used as the chromogen. The section was then counterstained with haematoxylin and mounted with DPX.

For other IHC staining systems (automated and non-automated) customers should optimize variable parameters such as antigen retrieval conditions, primary antibody concentration and antibody incubation times.

**Please note:** All products are "FOR RESEARCH USE ONLY. NOT FOR USE IN DIAGNOSTIC PROCEDURES"

### Our Abpromise to you: Quality guaranteed and expert technical support

- Replacement or refund for products not performing as stated on the datasheet
- Valid for 12 months from date of delivery
- Response to your inquiry within 24 hours
- We provide support in Chinese, English, French, German, Japanese and Spanish
- Extensive multi-media technical resources to help you
- We investigate all quality concerns to ensure our products perform to the highest standards

If the product does not perform as described on this datasheet, we will offer a refund or replacement. For full details of the Abpromise, please visit <https://www.abcam.com/abpromise> or contact our technical team.

### Terms and conditions

- Guarantee only valid for products bought direct from Abcam or one of our authorized distributors