


Product datasheet

Anti-TLE3/ESG antibody ab94972

★★★★★ [3 Abreviews](#) [3 References](#) [3 Images](#)

Overview

Product name	Anti-TLE3/ESG antibody
Description	Rabbit polyclonal to TLE3/ESG
Host species	Rabbit
Specificity	From Jan 2024, QC testing of replenishment batches of this polyclonal changed. All tested and expected application and reactive species combinations are still covered by our Abcam product promise. However, we no longer test all applications. For more information on a specific batch, please contact our Scientific Support who will be happy to help.
Tested applications	Suitable for: IP, WB, ICC/IF
Species reactivity	Reacts with: Human Predicted to work with: Mouse, Rat 
Immunogen	Synthetic peptide. This information is proprietary to Abcam and/or its suppliers.
Positive control	This antibody gave a positive signal in the following lysates: Breast (Human) Tissue Lysate; MCF7 Whole Cell Lysate; MDA-MB-231 Whole Cell Lysate; Lung (Human) Tissue Lysate; A549 Whole Cell Lysate; A431 Whole Cell Lysate; HeLa Nuclear Lysate
General notes	<p>The Life Science industry has been in the grips of a reproducibility crisis for a number of years. Abcam is leading the way in addressing this with our range of recombinant monoclonal antibodies and knockout edited cell lines for gold-standard validation. Please check that this product meets your needs before purchasing.</p> <p>If you have any questions, special requirements or concerns, please send us an inquiry and/or contact our Support team ahead of purchase. Recommended alternatives for this product can be found below, along with publications, customer reviews and Q&As</p>

Properties

Form	Liquid
Storage instructions	Shipped at 4°C. Store at +4°C short term (1-2 weeks). Upon delivery aliquot. Store at -20°C or -80°C. Avoid freeze / thaw cycle.
Storage buffer	pH: 7.40 Preservative: 0.02% Sodium azide Constituent: PBS

Batches of this product that have a concentration < 1mg/ml may have BSA added as a stabilising agent. If you would like information about the formulation of a specific lot, please contact our scientific support team who will be happy to help.

Purity	Immunogen affinity purified
Clonality	Polyclonal
Isotype	IgG

Applications

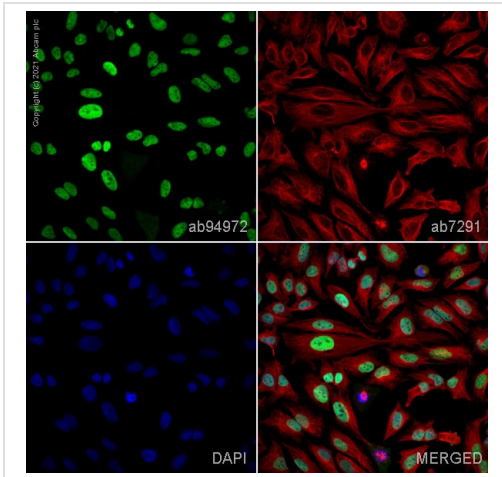
The Abpromise guarantee Our **Abpromise guarantee** covers the use of ab94972 in the following tested applications. The application notes include recommended starting dilutions; optimal dilutions/concentrations should be determined by the end user.

Application	Abreviews	Notes
IP	★★★★★ (1)	Use at an assay dependent concentration.
WB	★★★★★ (1)	Use a concentration of 1 µg/ml. Detects a band of approximately 83 kDa (predicted molecular weight: 83 kDa).
ICC/IF	★★★★★ (1)	Use a concentration of 1 µg/ml.

Target

Function	Transcriptional corepressor that binds to a number of transcription factors. Inhibits the transcriptional activation mediated by CTNNB1 and TCF family members in Wnt signaling. The effects of full-length TLE family members may be modulated by association with dominant-negative AES.
Tissue specificity	Placenta and lung.
Sequence similarities	Belongs to the WD repeat Groucho/TLE family. Contains 7 WD repeats.
Post-translational modifications	Ubiquitinated by XIAP/BIRC4. This ubiquitination does not affect its stability, nuclear localization, or capacity to tetramerize but inhibits its interaction with TCF7L2/TCF4.
Cellular localization	Nucleus.

Images

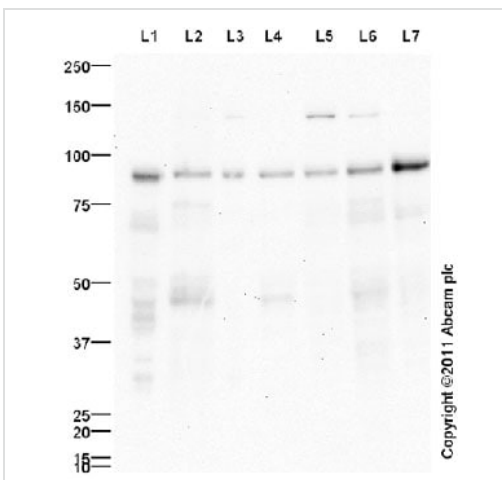


Immunocytochemistry/ Immunofluorescence - Anti-TLE3/ESG antibody (ab94972)

ab94972 staining Transducin-like enhancer protein 3 in HeLa cells. The cells were fixed with 4% paraformaldehyde (10 min), permeabilized with 0.1% PBS-Triton X-100 for 5 minutes and then blocked with 1% BSA/10% normal goat serum/0.3M glycine in 0.1% PBS-Tween for 1h. The cells were then incubated overnight at 4°C with ab94972 at 0.1µg/ml and **ab7291**, Mouse monoclonal [DM1A] to alpha Tubulin - Loading Control. Cells were then incubated with **ab150081**, Goat polyclonal Secondary Antibody to Rabbit IgG - H&L (Alexa Fluor® 488), pre-adsorbed at 1/1000 dilution (shown in green) and **ab150120**, Goat polyclonal Secondary Antibody to Mouse IgG - H&L (Alexa Fluor® 594), pre-adsorbed at 1/1000 dilution (shown in pseudocolour red). Nuclear DNA was labelled with DAPI (shown in blue).

Also suitable in cells fixed with 100% methanol (5 min).

Image was acquired with a high-content analyser (Operetta CLS, Perkin Elmer) and a maximum intensity projection of confocal sections is shown.



Western blot - Anti-TLE3/ESG antibody (ab94972)

All lanes : Anti-TLE3/ESG antibody (ab94972) at 1 µg/ml

Lane 1 : Human breast tissue lysate - total protein (**ab30090**)

Lane 2 : MCF7 (Human breast adenocarcinoma cell line) Whole Cell Lysate

Lane 3 : MDA-MB-231 (Human breast adenocarcinoma cell line) Whole Cell Lysate

Lane 4 : Lung (Human) Tissue Lysate

Lane 5 : A549 (Human lung adenocarcinoma epithelial cell line) Whole Cell Lysate

Lane 6 : A431 (Human epithelial carcinoma cell line) Whole Cell Lysate

Lane 7 : HeLa (Human epithelial carcinoma cell line) Nuclear Lysate

Lysates/proteins at 10 µg per lane.

Secondary

All lanes : Goat polyclonal Secondary Antibody to Rabbit IgG - H&L (HRP), pre-adsorbed at 1/5000 dilution

Developed using the ECL technique.

Performed under reducing conditions.

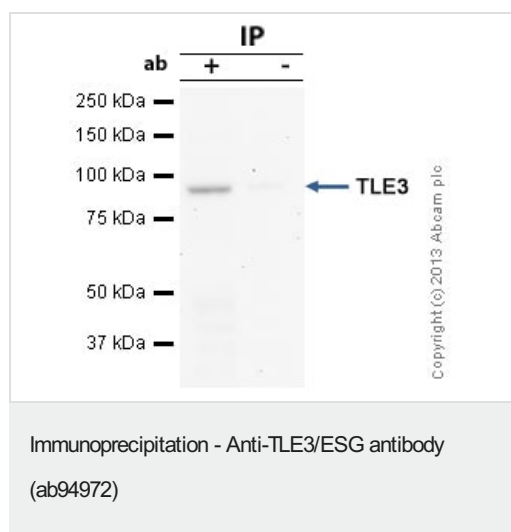
Predicted band size: 83 kDa

Observed band size: 83 kDa

Additional bands at: 125 kDa, 43 kDa. We are unsure as to the identity of these extra bands.

Exposure time: 8 minutes

Abcam recommends using milk as the blocking agent. Abcam welcomes customer feedback and would appreciate any comments regarding this product and the data presented above.



TLE3/ESG was immunoprecipitated using 0.5mg HeLa whole cell extract, 5µg of Rabbit polyclonal to TLE3/ESG and 50µl of protein G magnetic beads (+). No antibody was added to the control (-).

The antibody was incubated under agitation with Protein G beads for 10min, HeLa whole cell extract lysate diluted in RIPA buffer was added to each sample and incubated for a further 10min under agitation.

Proteins were eluted by addition of 40µl SDS loading buffer and incubated for 10min at 70°C; 10µl of each sample was separated on a SDS PAGE gel, transferred to a nitrocellulose membrane, blocked with 5% BSA and probed with ab94972.

Secondary: Mouse monoclonal [SB62a] Secondary Antibody to Rabbit IgG light chain (HRP) ([ab99697](#)).

Band: 83kDa; TLE3/ESG

Please note: All products are "FOR RESEARCH USE ONLY. NOT FOR USE IN DIAGNOSTIC PROCEDURES"

Our Abpromise to you: Quality guaranteed and expert technical support

- Replacement or refund for products not performing as stated on the datasheet
- Valid for 12 months from date of delivery
- Response to your inquiry within 24 hours

- We provide support in Chinese, English, French, German, Japanese and Spanish
- Extensive multi-media technical resources to help you
- We investigate all quality concerns to ensure our products perform to the highest standards

If the product does not perform as described on this datasheet, we will offer a refund or replacement. For full details of the Abpromise, please visit <https://www.abcam.com/abpromise> or contact our technical team.

Terms and conditions

- Guarantee only valid for products bought direct from Abcam or one of our authorized distributors