




Product datasheet

Anti-TLE3/ESG antibody [CL3573] ab213596

[2 References](#) [9 Images](#)

Overview

Product name	Anti-TLE3/ESG antibody [CL3573]
Description	Mouse monoclonal [CL3573] to TLE3/ESG
Host species	Mouse
Tested applications	Suitable for: WB, IHC-P, ICC/IF
Species reactivity	Reacts with: Human Predicted to work with: Mouse, Rat 
Immunogen	Recombinant fragment corresponding to Human TLE3/ESG aa 150-250. Database link: Q04726  Run BLAST with  Run BLAST with
Positive control	WB: HEK293 cell lysate and HeLa nuclear lysate. IHC-P: Human cervix, tonsil, oral mucosa, small intestine, kidney and skeletal muscle tissues. ICC/IF: HeLa cells.
General notes	<p>The Life Science industry has been in the grips of a reproducibility crisis for a number of years. Abcam is leading the way in addressing this with our range of recombinant monoclonal antibodies and knockout edited cell lines for gold-standard validation. Please check that this product meets your needs before purchasing.</p> <p>If you have any questions, special requirements or concerns, please send us an inquiry and/or contact our Support team ahead of purchase. Recommended alternatives for this product can be found below, along with publications, customer reviews and Q&As</p>

Properties

Form	Liquid
Storage instructions	Shipped at 4°C. Store at +4°C short term (1-2 weeks). Upon delivery aliquot. Store at -20°C long term. Avoid freeze / thaw cycle.
Storage buffer	pH: 7.20 Preservative: 0.02% Sodium azide Constituents: 59% PBS, 40% Glycerol (glycerin, glycerine)
Purity	Protein A purified
Clonality	Monoclonal
Clone number	CL3573

Applications

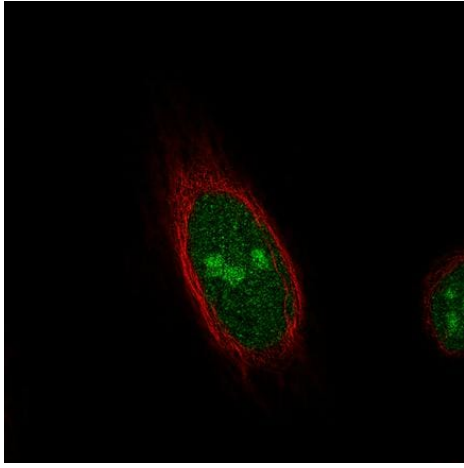
The Abpromise guarantee Our **Abpromise guarantee** covers the use of ab213596 in the following tested applications. The application notes include recommended starting dilutions; optimal dilutions/concentrations should be determined by the end user.

Application	Abreviews	Notes
WB		1/500 - 1/1000. Predicted molecular weight: 83 kDa.
IHC-P		1/10000 - 1/20000. Perform heat mediated antigen retrieval with citrate buffer pH 6 before commencing with IHC staining protocol.
ICC/IF		Use a concentration of 2 - 10 µg/ml. Fixation/Permeabilization: PFA/Triton X-100

Target

Function	Transcriptional corepressor that binds to a number of transcription factors. Inhibits the transcriptional activation mediated by CTNNB1 and TCF family members in Wnt signaling. The effects of full-length TLE family members may be modulated by association with dominant-negative AES.
Tissue specificity	Placenta and lung.
Sequence similarities	Belongs to the WD repeat Groucho/TLE family. Contains 7 WD repeats.
Post-translational modifications	Ubiquitinated by XIAP/BIRC4. This ubiquitination does not affect its stability, nuclear localization, or capacity to tetramerize but inhibits its interaction with TCF7L2/TCF4.
Cellular localization	Nucleus.

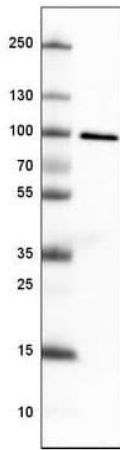
Images



Immunocytochemistry/ Immunofluorescence - Anti-TLE3/ESG antibody [CL3573] (ab213596)

PFA-fixed, Triton X-100 permeabilized HeLa cells stained for TLE3 (Green) using ab213596 at 4 µg/ml in ICC/IF.

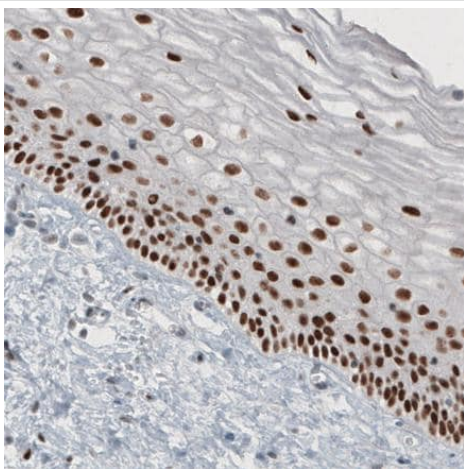
Microtubules are stained red.



Western blot - Anti-TLE3/ESG antibody [CL3573] (ab213596)

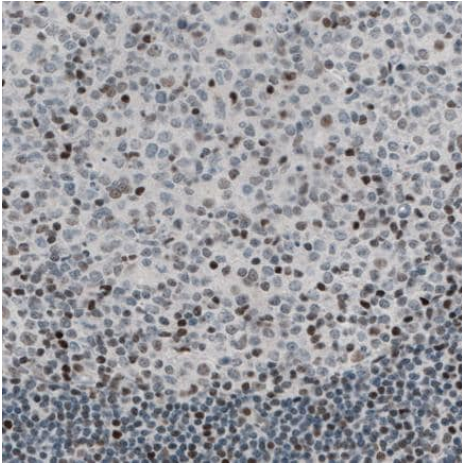
Anti-TLE3/ESG antibody [CL3573] (ab213596) at 1/500 dilution + HEK293 cell lysate

Predicted band size: 83 kDa



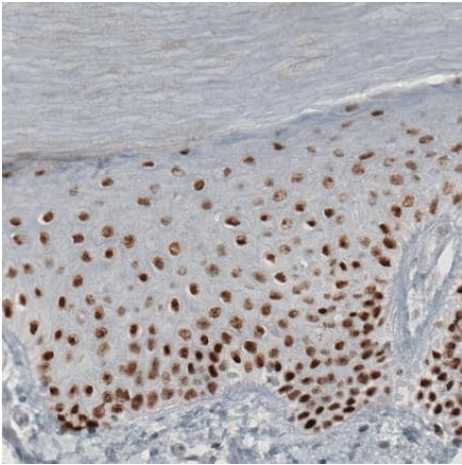
Immunohistochemistry (Formalin/PFA-fixed paraffin-embedded sections) - Anti-TLE3/ESG antibody [CL3573] (ab213596)

Immunohistochemical analysis of Paraffin-embedded Human cervix tissue labeling TLE3/ESG with ab213596 at 1/10000 dilution.



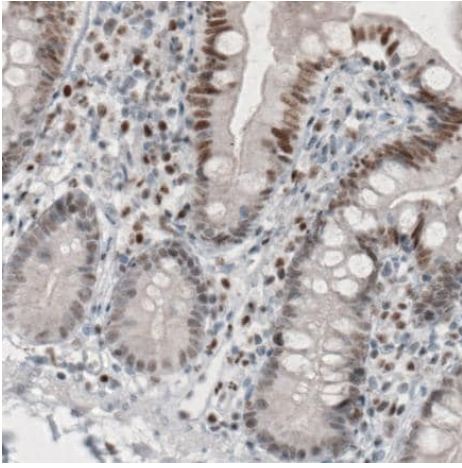
Immunohistochemical analysis of Paraffin-embedded Human tonsil tissue labeling TLE3/ESG with ab213596 at 1/10000 dilution.

Immunohistochemistry (Formalin/PFA-fixed paraffin-embedded sections) - Anti-TLE3/ESG antibody [CL3573] (ab213596)



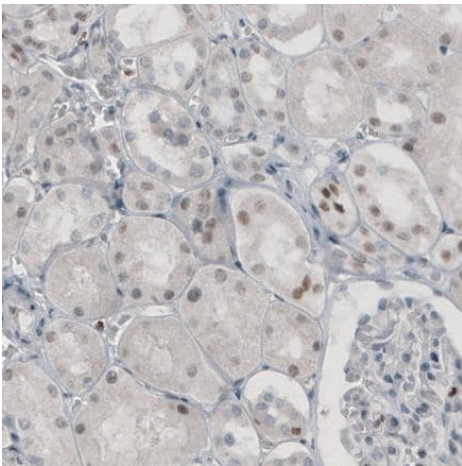
Immunohistochemical analysis of Paraffin-embedded Human oral mucosa tissue labeling TLE3/ESG with ab213596 at 1/10000 dilution.

Immunohistochemistry (Formalin/PFA-fixed paraffin-embedded sections) - Anti-TLE3/ESG antibody [CL3573] (ab213596)



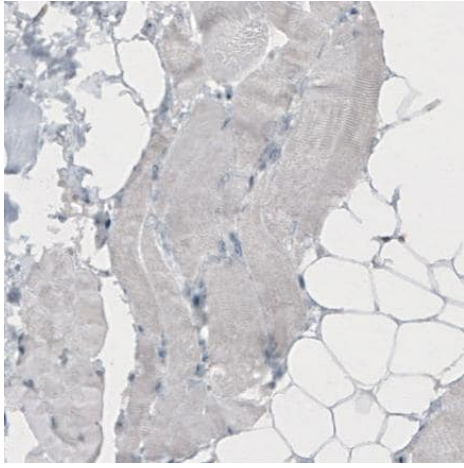
Immunohistochemical analysis of Paraffin-embedded Human small intestine tissue labeling TLE3/ESG with ab213596 at 1/10000 dilution.

Immunohistochemistry (Formalin/PFA-fixed paraffin-embedded sections) - Anti-TLE3/ESG antibody [CL3573] (ab213596)



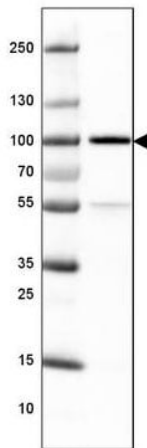
Immunohistochemical analysis of Paraffin-embedded Human kidney tissue labeling TLE3/ESG with ab213596 at 1/10000 dilution.

Immunohistochemistry (Formalin/PFA-fixed paraffin-embedded sections) - Anti-TLE3/ESG antibody [CL3573] (ab213596)



Immunohistochemical analysis of Paraffin-embedded Human skeletal muscle tissue labeling TLE3/ESG with ab213596 at 1/10000 dilution.

Immunohistochemistry (Formalin/PFA-fixed paraffin-embedded sections) - Anti-TLE3/ESG antibody [CL3573] (ab213596)



Anti-TLE3/ESG antibody [CL3573] (ab213596) at 1/500 dilution + HeLa nuclear lysate

Predicted band size: 83 kDa

Western blot - Anti-TLE3/ESG antibody [CL3573] (ab213596)

Please note: All products are "FOR RESEARCH USE ONLY. NOT FOR USE IN DIAGNOSTIC PROCEDURES"

Our Abpromise to you: Quality guaranteed and expert technical support

- Replacement or refund for products not performing as stated on the datasheet
- Valid for 12 months from date of delivery
- Response to your inquiry within 24 hours
- We provide support in Chinese, English, French, German, Japanese and Spanish
- Extensive multi-media technical resources to help you
- We investigate all quality concerns to ensure our products perform to the highest standards

If the product does not perform as described on this datasheet, we will offer a refund or replacement. For full details of the Abpromise, please visit <https://www.abcam.com/abpromise> or contact our technical team.

Terms and conditions

- Guarantee only valid for products bought direct from Abcam or one of our authorized distributors