

Product datasheet

Anti-TLR11 antibody ab21274

2 Images

Overview

| | |
|----------------------------|--|
| Product name | Anti-TLR11 antibody |
| Description | Rabbit polyclonal to TLR11 |
| Host species | Rabbit |
| Tested applications | Suitable for: ICC/IF, WB |
| Species reactivity | Reacts with: Mouse |
| Immunogen | Synthetic peptide corresponding to Mouse TLR11 (C terminal). The immunogen is located within the last 50 amino acids (peptide corresponding to 15 amino acids) of TLR11. Database link: Q6R5P0 (Peptide available as ab39867) |

General notes

The Life Science industry has been in the grips of a reproducibility crisis for a number of years. Abcam is leading the way in addressing this with our range of recombinant monoclonal antibodies and knockout edited cell lines for gold-standard validation. Please check that this product meets your needs before purchasing.

If you have any questions, special requirements or concerns, please send us an inquiry and/or contact our Support team ahead of purchase. Recommended alternatives for this product can be found below, along with publications, customer reviews and Q&As

Properties

| | |
|-----------------------------|---|
| Form | Liquid |
| Storage instructions | Shipped at 4°C. Store at +4°C. |
| Storage buffer | pH: 7.2 Preservative: 0.02% Sodium azide Constituent: PBS |
| Purification notes | Ion exchange chromatography. |
| Clonality | Polyclonal |
| Isotype | IgG |

Applications

The Abpromise guarantee

Our **Abpromise guarantee** covers the use of ab21274 in the following tested applications.

The application notes include recommended starting dilutions; optimal dilutions/concentrations should be determined by the end user.

| Application | Abreviews | Notes |
|-------------|-----------|---|
| ICC/IF | | Use a concentration of 2 µg/ml. |
| WB | | Use a concentration of 0.5 - 1 µg/ml. Detects a band of approximately 90 kDa. |

Target

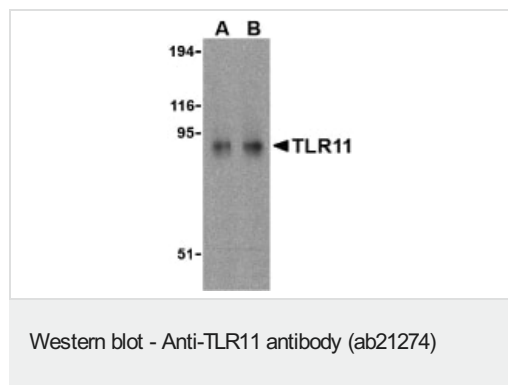
Relevance

Toll like receptors (TLRs) are signaling molecules that recognize different microbial products during infection and serve as an important link between the innate and adaptive immune responses. These proteins act through adaptor molecules such as MyD88 and TIRAP to activate various kinases and transcription factors. TLR11 is one of three mouse TLRs that lack a human ortholog. It is activated specifically by uropathogenic bacteria, and mice lacking TLR11 showed a much greater susceptibility to uropathogenic infections, indicating a potentially important role for TLR11 in preventing infections in the urogenital system.

Cellular localization

Type I membrane protein

Images



Western blot analysis of TLR11 in RAW264.7 cell lysates with anti-TLR11 at (A) 0.5 and (B) 1 µg/ml. Western blot analysis of TLR11 in RAW264.7 cell lysates with anti-TLR11 at (A) 0.5 and (B) 1 µg/ml.



ab21274 at 2µg/ml staining TLR11 in RAW264.7 cells by ICC/IF

Please note: All products are "FOR RESEARCH USE ONLY. NOT FOR USE IN DIAGNOSTIC PROCEDURES"

Our Abpromise to you: Quality guaranteed and expert technical support

- Replacement or refund for products not performing as stated on the datasheet
- Valid for 12 months from date of delivery
- Response to your inquiry within 24 hours

- We provide support in Chinese, English, French, German, Japanese and Spanish
- Extensive multi-media technical resources to help you
- We investigate all quality concerns to ensure our products perform to the highest standards

If the product does not perform as described on this datasheet, we will offer a refund or replacement. For full details of the Abpromise, please visit <https://www.abcam.com/abpromise> or contact our technical team.

Terms and conditions

- Guarantee only valid for products bought direct from Abcam or one of our authorized distributors