

## Product datasheet

### Anti-TLR2 antibody [EPR20303] $\alpha$ b209217

Recombinant RabMAb

[14 References](#) [4 Images](#)

#### Overview

|                            |   |
|----------------------------|---|
| <b>Product name</b>        | Anti-TLR2 antibody [EPR20303]   |
| <b>Description</b>         | Rabbit monoclonal [EPR20303] to TLR2  |
| <b>Host species</b>        | Rabbit  |
| <b>Tested applications</b> | <b>Suitable for:</b> WB, IP   |
| <b>Species reactivity</b>  | <b>Reacts with:</b> Mouse, Rat  |
| <b>Immunogen</b>           | Recombinant fragment. This information is proprietary to Abcam and/or its suppliers.  |
| <b>Positive control</b>    | WB: Mouse and rat spleen tissue lysates; RAW 264.7 whole cell lysates untreated and treated with 1 $\mu$ g/ml lipopolysaccharides for 6 hours . IP: RAW 264.7 treated with 1 $\mu$ g/ml LPS for 6 hours whole cell lysate.  |
| <b>General notes</b>       | <p>This product is a recombinant monoclonal antibody, which offers several advantages including:</p> <ul style="list-style-type: none"> <li>- High batch-to-batch consistency and reproducibility</li> <li>- Improved sensitivity and specificity</li> <li>- Long-term security of supply</li> <li>- Animal-free production</li> </ul> <p>For more information <a href="#">see here</a>.</p> <p>Our RabMAb<sup>®</sup> technology is a patented hybridoma-based technology for making rabbit monoclonal antibodies. For details on our patents, please refer to <a href="#">RabMAb<sup>®</sup> patents</a>.</p> |

#### Properties

|                             |   |
|-----------------------------|---|
| <b>Form</b>                 | Liquid  |
| <b>Storage instructions</b> | Shipped at 4°C. Store at +4°C short term (1-2 weeks). Upon delivery aliquot. Store at -20°C long term. Avoid freeze / thaw cycle. |
| <b>Storage buffer</b>       | <p>pH: 7.2</p> <p>Preservative: 0.01% Sodium azide</p> <p>Constituents: 59% PBS, 40% Glycerol, 0.05% BSA</p>                      |
| <b>Purity</b>               | Protein A purified  |
| <b>Clonality</b>            | Monoclonal  |
| <b>Clone number</b>         | EPR20303  |

Isotype

IgG

## Applications

### The Abpromise guarantee

Our **Abpromise guarantee** covers the use of ab209217 in the following tested applications.

The application notes include recommended starting dilutions; optimal dilutions/concentrations should be determined by the end user.

| Application | Abreviews | Notes  |
|-------------|-----------|--|
| WB          |           | 1/1000. Detects a band of approximately 89 kDa (predicted molecular weight: 89 kDa). |
| IP          |           | 1/30.  |

## Target

### Function

Cooperates with LY96 to mediate the innate immune response to bacterial lipoproteins and other microbial cell wall components. Cooperates with TLR1 to mediate the innate immune response to bacterial lipoproteins or lipopeptides. Acts via MYD88 and TRAF6, leading to NF-kappa-B activation, cytokine secretion and the inflammatory response. May also promote apoptosis in response to lipoproteins. Recognizes mycoplasmal macrophage-activating lipopeptide-2kD (MALP-2), soluble tuberculosis factor (STF), phenol-soluble modulins (PSM) and B.burgdorferi outer surface protein A lipoprotein (OspA-L) cooperatively with TLR6.

### Tissue specificity

Highly expressed in peripheral blood leukocytes, in particular in monocytes, in bone marrow, lymph node and in spleen. Also detected in lung and in fetal liver. Levels are low in other tissues.

### Sequence similarities

Belongs to the Toll-like receptor family.  
Contains 14 LRR (leucine-rich) repeats.  
Contains 1 TIR domain.

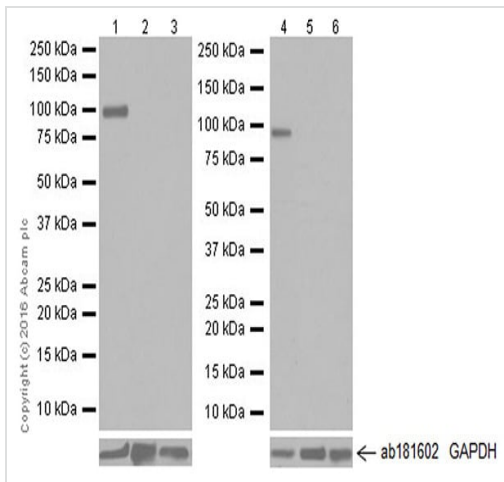
### Post-translational modifications

Glycosylation of Asn-442 is critical for secretion of the N-terminal ectodomain of TLR2.

### Cellular localization

Membrane.

## Images



Western blot - Anti-TLR2 antibody [EPR20303]  
(ab209217)

**All lanes** : Anti-TLR2 antibody [EPR20303] (ab209217) at 1/1000 dilution

**Lane 1** : Mouse spleen tissue lysate

**Lane 2** : Mouse brain tissue lysate

**Lane 3** : Mouse heart tissue lysate

**Lane 4** : Rat spleen tissue lysate

**Lane 5** : Rat brain tissue lysate

**Lane 6** : Rat heart tissue lysate

Lysates/proteins at 10 µg per lane.

### Secondary

**All lanes** : Goat Anti-Rabbit IgG H&L (HRP) ([ab97051](#)) at 1/100000 dilution

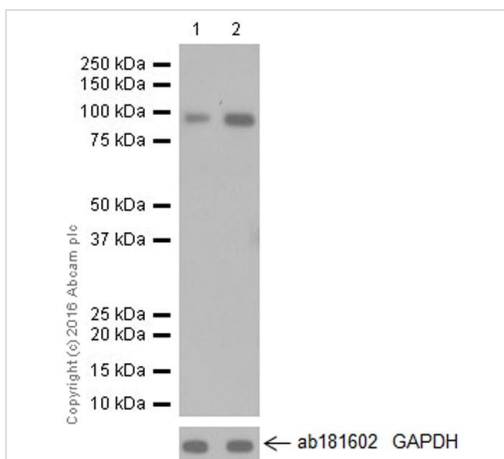
**Predicted band size:** 89 kDa

**Observed band size:** 89 kDa

**Exposure time:** 3 minutes

**Blocking/Dilution buffer:** 5% NFDM/TBST.

TLR2 is expressed in spleen but not in brain and heart according to the literature (PMID: 11777946).



Western blot - Anti-TLR2 antibody [EPR20303]  
(ab209217)

**All lanes** : Anti-TLR2 antibody [EPR20303] (ab209217) at 1/10000 dilution

**Lane 1** : RAW 264.7 (Mouse macrophage cell line transformed with Abelson murine leukemia virus) whole cell lysate

**Lane 2** : RAW 264.7 whole cell lysate treated with 1 µg/ml lipopolysaccharides for 6 hours

Lysates/proteins at 10 µg per lane.

### Secondary

**All lanes** : Goat Anti-Rabbit IgG H&L (HRP) ([ab97051](#)) at 1/100000 dilution

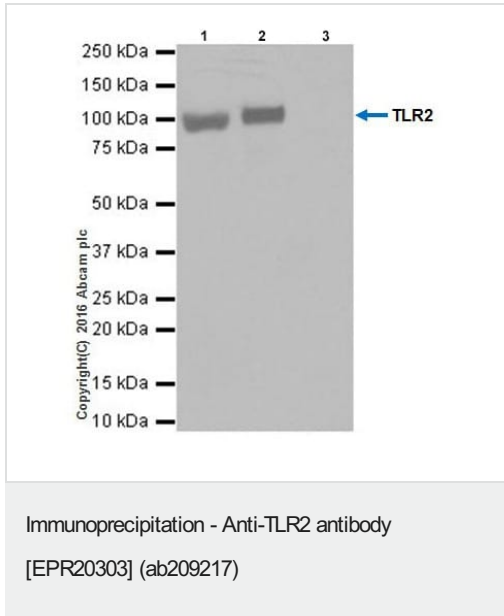
**Predicted band size:** 89 kDa

**Observed band size:** 89 kDa

**Exposure time:** 3 minutes

**Blocking/Dilution buffer:** 5% NFDM/TBST.

Expression of TLR2 in RAW 264.7 cells can be enhanced by LPS treatment according to the literature (PMID: 11067935).



TLR2 was immunoprecipitated from 0.35 mg of RAW 264.7 (Mouse macrophage cell line transformed with Abelson murine leukemia virus) whole cell lysate, treated with 1 µg/ml LPS for 6 hours, with ab209217 at 1/30 dilution.

Western blot was performed from the immunoprecipitate using ab209217 at 1/500 dilution.

VeriBlot for IP Detection Reagent (HRP) ([ab131366](#)), was used for detection at 1/1000 dilution.

**Lane 1:** RAW 264.7 whole cell lysate treated with 1 µg/ml LPS for 6 hours, 10 µg (Input).

**Lane 2:** ab209217 IP in RAW 264.7 whole cell lysate treated with 1 µg/ml LPS for 6 hours.

**Lane 3:** Rabbit monoclonal IgG ([ab172730](#)) instead of ab209217 in RAW 264.7 whole cell lysate treated with 1 µg/ml LPS for 6 hours.

**Blocking and dilution buffer and concentration:** 5% NFDM/TBST.

Why choose a recombinant antibody?

|  |  |
|--|--|
|  <p><b>Research with confidence</b><br/>Consistent and reproducible results</p> |  <p><b>Long-term and scalable supply</b><br/>Recombinant technology</p> |
|  <p><b>Success from the first experiment</b><br/>Confirmed specificity</p>      |  <p><b>Ethical standards compliant</b><br/>Animal-free production</p>   |

Anti-TLR2 antibody [EPR20303] (ab209217)

**Please note:** All products are "FOR RESEARCH USE ONLY. NOT FOR USE IN DIAGNOSTIC PROCEDURES"

### **Our Abpromise to you: Quality guaranteed and expert technical support**

---

- Replacement or refund for products not performing as stated on the datasheet
- Valid for 12 months from date of delivery
- Response to your inquiry within 24 hours
  
- We provide support in Chinese, English, French, German, Japanese and Spanish
- Extensive multi-media technical resources to help you
- We investigate all quality concerns to ensure our products perform to the highest standards

If the product does not perform as described on this datasheet, we will offer a refund or replacement. For full details of the Abpromise, please visit <https://www.abcam.com/abpromise> or contact our technical team.

### **Terms and conditions**

---

- Guarantee only valid for products bought direct from Abcam or one of our authorized distributors